

SIMCOM X -Communications Client.

some notes to help with setup and use.

SIMCOM X is a stand alone communications system, (primarily) for use with pilots and controllers using any Flight Simulator. It will link with any Sim. platform to enable the frequency selection to sync with / be controlled by the simulator's A/C radio, or it can be entered into SIMCOM X, by hand. **The latest JoinFS has a link to SIMCOM X site.** Two members, in particular, have undertaken extensive trials and tests to aid the development of this Help Note.

There are still some issues regarding the use of FSUIPC. Once solved, this document will be updated. Also, no tests have been carried out hosting/joining a SIMCOM X group session.

THE SIMCOM X MAIN WINDOW.

1. Active frequency, Com 1.

2. Frequency change switch Com1

3. Client window, Com1. Shows all on your frequency, plus, Callsigns; Range; TX (if transmitting).

Double click this window to open 'MUTE' window, A/C moved to this window will be muted (M).

4. Active frequency, Com 2.

5. Frequency change switch Com2

6. Main console window - displays what is happening. Inc RX msgs.

7. Client window, Com 2.

8. Message box. Type message, SEND - to ALL on frequency. MSGS received in 3. or 7 above.

9. STATUS light. Gray-not active; Orange-'Waking up'; Green- good connection, settings OK; RED - A/C have tried to connect to you but cannot. It means either:- You cannot connect to host. Or, If you are Hosting, No one can connect to you. Possible solutions:-

- In CONFIG. Check UPNP enabled. Restart SIMCOM X.
- If UNPNP ticked, check it is enabled in your Router.
- If above OK, still red, OPEN UDP port 9988 in router.

10. COM 2 BUTTON. When lit - transmitting on COM2.

11. Callsign Box. Enter A/C callsign or ATC ICAO and pos.

12. COM 1 BUTTON. When lit - transmitting on COM1.

13. The Server Box. Leave blank, UNLESS you selected 'join group server' (or HOSTED) in CONFIG. Then this is where you put a copy of the HOST IP, else shows SCX.



14. COM 1 standby frequency.

15. ACTIVE ATC window.

Displays ATC information and your range if in SCX mode.

16. COM 2 standby frequency.

17. Squawk box. Displays your Squawk to ATC and maps.

18. BOTH Button. enables Listening on COM 1 & COM 2.

19. CONFIG Button. Opens / Closes CONFIG window, see below. Not visible, move this window.

20. The POWER Button. Press to turn SIMCOM X on/off. Button Border RED:- The (SIMCOM X) radio is OFF.

Button Border GREEN:- The (SIMCOM X) radio is ON.

Button Border ORANGE:- The (SIMCOM X) radio is trying to connect to a frequency. (As entered / selected above).

21. SIM Indicator. Green, Connected to a SIM, if setup, Sim will control frequencies. RED; SIMCOM X can provide standalone COMMS for A/C, or as ATC.

22. VOICE indicator. Green, Connected to a voice server.

23. MODE Indicator. SCX (SIMCOM X) or Group network.

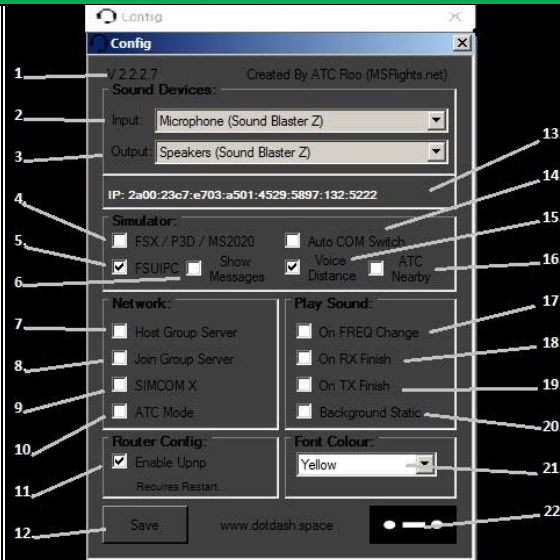
24. PTT Display. Displays Joystick button or Keyboard key you have setup as you transmit switch.

TO SET/RESET PTT. Press SET Button followed immediately by the button/key you will use.

THE SIMCOM X CONFIG WINDOW.

1. **Version Number.**
2. **INPUT DEVICE.** - Microphone.
3. **OUTPUT DEVICE.** - Speaker.
4. **FSX/P3D/MS2020,** Connect to sim via SimConnect.
5. **FSUIPC.** Connect to sim via FSUIPC or XPUIPC for Xplane.
6. **SHOW MESSAGES.**

7. **HOST GROUP SERVER.** Tick to HOST a server for a group. UDP Port 9988 will need to be forwarded correctly for others to connect. You cannot join a group or use SCX, If Hosting a Group.



13. **THE IP ADDRESS BAR.** If you are HOSTING, this is your IP that other A/C need. Double click to save to clipboard, so that you can paste in the main window, (13. The Server Box.).
14. **AUTOCOM SWITCH.** When in your SIM. tick to enable A/C COMMS to change SIMMCOM X frequencies. Including Standby.
15. **DISTANCE BOX.** Select to modify RX sound (line of sight):-
A/C <40nm from you. clear.
A/C > 200nm from you. Nothing Between, depending on range.
16. **ATC NEARBY.**
17. **ON FREQUENCY CHANGE.** Sound when you change.
18. **ON RX FINISH.** Sound when OTHER A/C releases PTT.
19. **ON TX FINISH.** Sound when YOU release PTT.
20. **BACKGROUND STATIC.** Puts static over audio IN.
21. **FONT COLOUR.** List and select COLOUR of Main Screen TEXT.
22. LINK to www.dotdash.space website.

8. **JOIN GROUP.** Tick to join HOST group, NOT CIX HUB.
8. **Cont.** You will need the Host's IP.
9. **SIMCOM X box.** Joins the SCX Network. SIMCOM X will connect you to others on the same frequency. Connection is via Port 9988. When A USER is FOUND: You connect through UDP Port 9988. PORT 9988 can be opened EITHER, by setting Port Forward in your Router. OR 'ticking' the UDPN button 11. so that SIMCOM X will do it.

10. **ATC MODE.** Select **IF YOU ARE ACTING AS ATC.** You will show as a green tower icon on JoinFS map, with frequency. Use with **ESJFS tool to link with Euroscope.**
11. **ENABLE Upnp.** Select to allow router to allow traffic through on UDP Port 9988. **Select if you are unsure how to PORT FORWARD.** If acting as ATC, especially ESJFS, you need to tick this to ensure good, stable connections.
12. **SAVE BUTTON.** WHEN YOU HAVE MADE CHANGES, click to SAVE THEM. - **Or you will lose them**

Pilots, setup your simulator and Join FS as described in JFS for Pilots, when done open SIMCOM X and setup as below, Stages 1 or 2. controllers; AFISO/AGOs, Stages 1or2 and 3 below

SETTING UP WITH JOINFS

1. **USING SIMCOM X WITH FSX/FSXE/MSFS2020: IN SIMCOM X CONFIG.**
SELECT/TICK; FSX/FSXE/MSFS2020 4.; AUTOCOM SWITCH 14.; SIMCOM X BOX 9.; ENABLE UPNP 11. AND SAVE 12.
AFTER YOU SWITCH ON POWER 12., ALL OTHER boxes un-ticked (Except Play sounds selection- Your Choice)
Selecting FSUIPC instead of FSX/FSXE/MSFS2020; Still has problems. This will be updated when fixed.
2. **USING SIMCOM X WITH XPlane: IN SIMCOM X CONFIG.**
SELECT/TICK; FSUIPC (using XUIPC) 3.; AUTOCOM SWITCH 14.; ENABLE UPNP 11. AND SAVE 12.
No problems reported with XPlane 11.
3. **IF Providing ATC :- USING SIMCOM X WITH ESJFS: IN SIMCOM X CONFIG.**
SELECT/TICK; 3.; AUTOCOM SWITCH 14.; ATC MODE 10.; ENABLE UPNP 11. AND SAVE 12.

NOTE:-

Occasionally, after saving the config, setup and pressing 'Power On', the Autocom switch disables, check it. SIMCOM X can be run without running JFS. i.e. Private offline.