

QNH

QFE

WIND

/

AIRFIELD NAME AND ICAO	ELVINGTON		EGYK
CALLSIGN (A/C RADIO)	York Radio		119.620
CALLSIGN (ES/VATSIM)	EGYK_R_TWR		Ground. ----
LOCATION	Lat N053.55.25.000	Long W000.59.10.000	Elev. 47 ft
LOCATION GEOGRAPHIC	4nm SE of York		Conspicuity ---
CHART SOURCE	FSX/PlanG		App.---
METAR AIRPORT	EGXU (vatspy)	QFE= QNH(METAR) -1 HPscs	
NAV AIDS (FSX / PLANG3)	None; see area chart below		
RUNWAYS	Headings	Dimension	Surface & notes
	08 / 26	3018m x	Asphalt
AIRSPACE/TRANS ALT QNH	CLASS G	Transition level 5000ft	Airspace above Class CFL195 LonFIR
CIRCUITS HEIGHT / DIR.	1100ft QNH	Overhead join may be required. 08RH. 26 LH	
NO FLY AREAS	North of the A64 ring road BELOW 2500ft		
LOCAL HAZARDS	Low flying Military A/C and NORDO Microlights transit area. Large model A/C flying takes place at Elvington.		
HELICOPTER OPERATIONS	Use main runway helipad and taxiway. Arrival/departure NOT BELOW 700ft QNH. Helipad is at Eastern end of 27 extension.		
SPECIAL RULES	The apron incorporates a motor racing track. When this is in use VFR parking as shown and A/D CLOSED TO NON GA A/C.		
REMARKS	When hosting a VFR 'fly-in' please use parking lines but park with minimum safe spacing between A/C.		
ALL PILOTS on CIX TeamSpeak: PLEASE PUT YOUR A/C CALLSIGN AFTER YOUR NAME.			

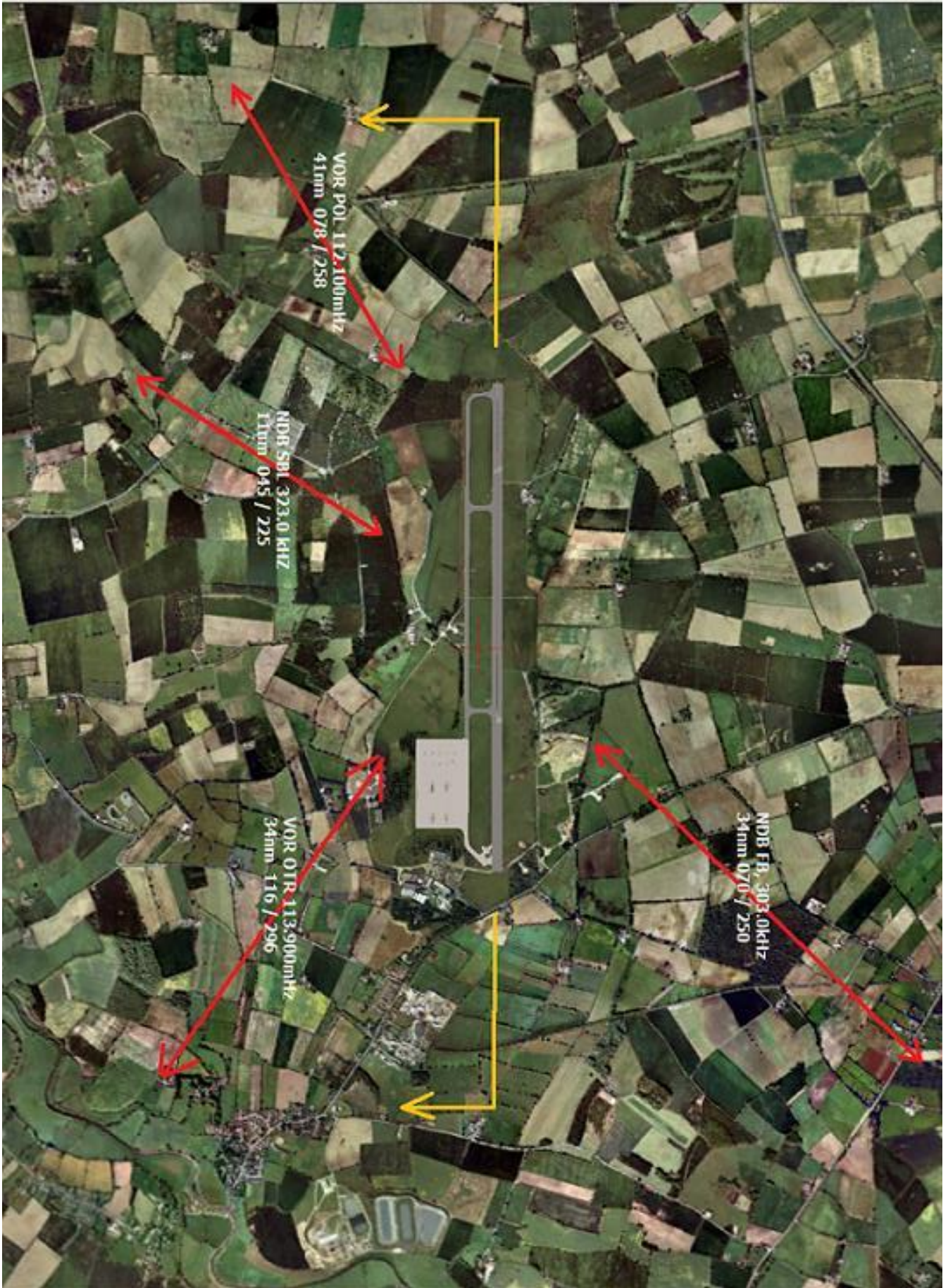


QNH

QFE

WIND

/



QNH

QFE

WIND

/

