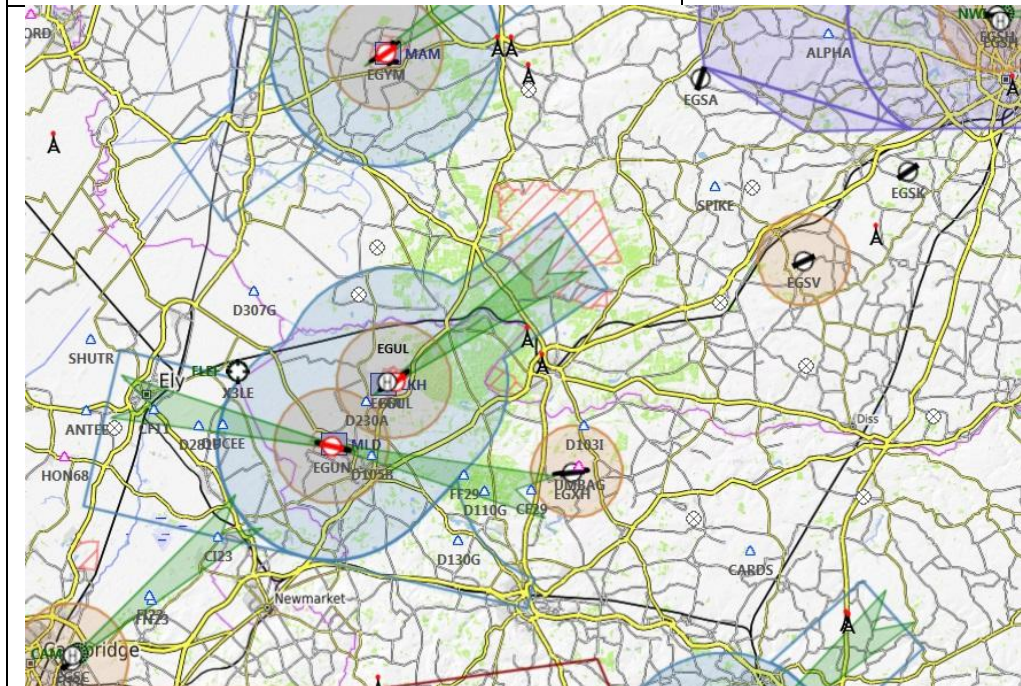
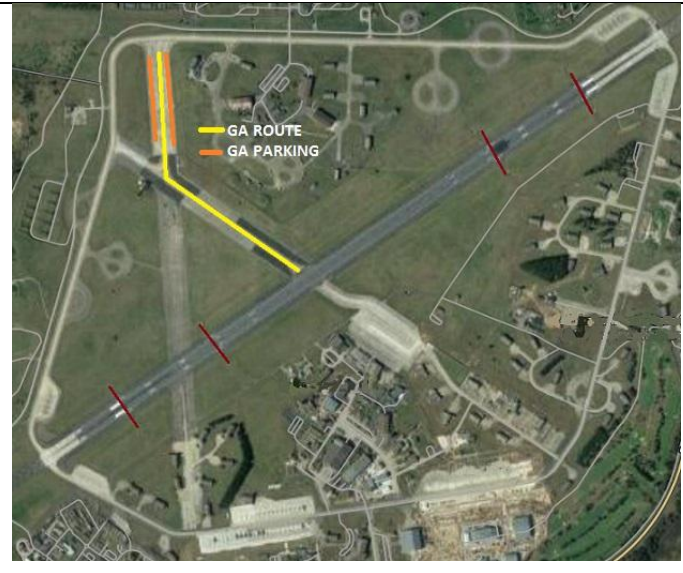
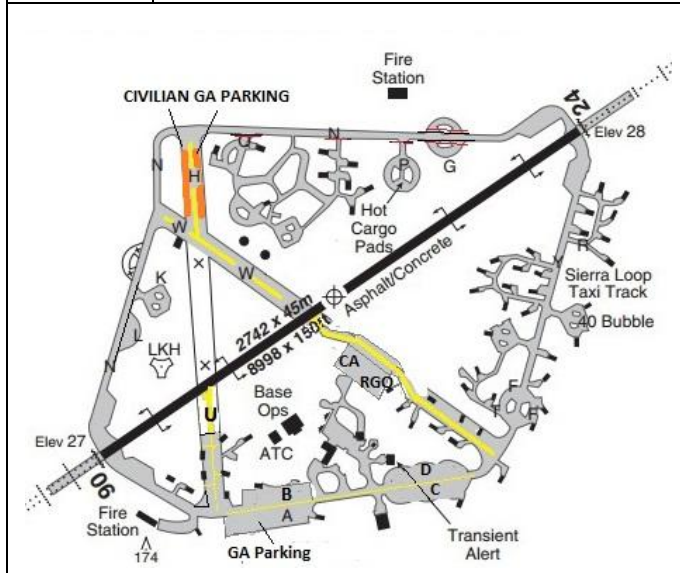


AIRFIELD NAME	November 23	LAKENHEATH RAF		EGUL	Central
CALLSIGN	EGUL_TWR			122.100	
CALLSIGN	Lakenheath Tower			APP. 136.500	
LOCATION	N052.24.34.000	E000.33.40.000		RDR. 128.900	
LOCATION GEO.	10 nm East of Ely; 18nm North East of Cambridge			QFE+QNH-1	
CHART SOURCE	UK MIL AIP, Ggl.Map	This is an active military airfield. ALL A/C will give way to military A/C.			
METAR A/P	EGUL (vatspy) EGSC	Use by civilian A/C, strictly PPR. Civilian GA A/C will park on the parking areas either side of Taxiway Hotel. ALL dispersal areas - DO NOT ENTER.			
NAV AIDS	ILS R24 109.900,				
RUNWAY	Heading	Dimensions	Surface	The runway has 4 Arrestor cables permanently deployed, flat on the runway when not in use. Small wheels - Land long; lift early; Enter/exit Taxi W. Backtrack and you have 685.5M	
	06 / 24	2742M x 45M	Asphalt		
AIRSPACE	Class D	CMATZ Class D sfc>A3000'			
CIRCUITS	A1000' as instructed by ATC- Make them wide to allow for fast jets. You may be told to leave the ATZ.				
NO FLY	Local villages/farms below circuit height within ATZ. Mildenhall ATZ unless approved by ATC.				
HAZARDS	BIRDS, all types. Military A/C movements. - Expect all types.				
HELIOS	Expect as for Fixed wing. BUT ATC may get you in/out direct, LISTEN. Expect to park on Hotel.				
SPECIAL RULES	You must request CMATZ 'Penetration' as well as enter ATZ (or 'Join' - GATCV request join = I request entry to land.). You will be required to give way to Military Traffic, If you hear them, work out what you might be asked to do, that way you should not get a sudden surprise from ATC. Also if normal procedure (Go-around?) could put you in conflict with the traffic, expect a non-standard instruction.				



PILOTS: PLEASE PUT YOUR A/C CALLSIGN AFTER YOUR NAME.

NOT TO BE USED FOR REAL WORLD OPERATIONS