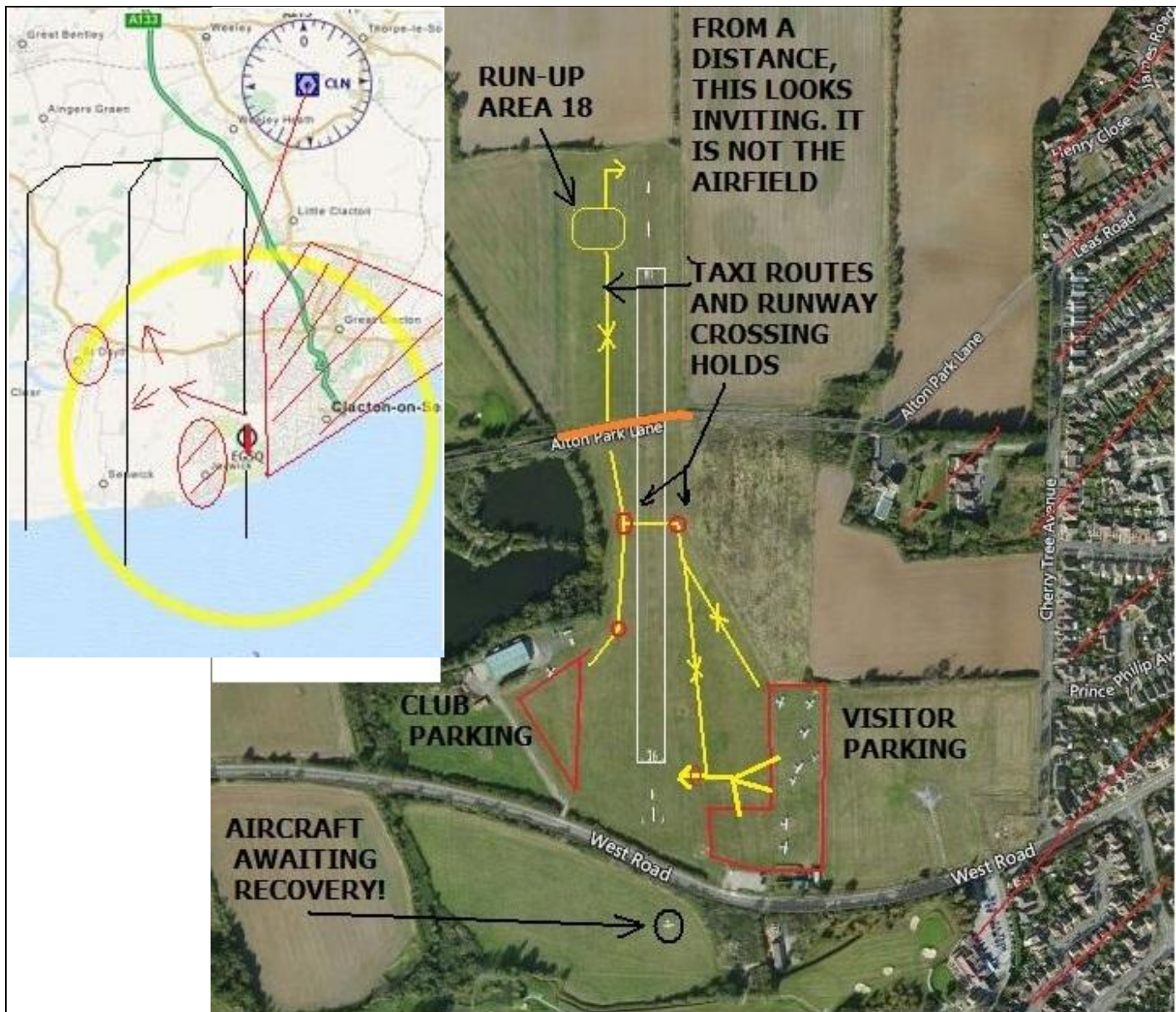


AIRFIELD NAME	January 23	CLACTON		EGSQ	C
CALLSIGN	Clacton Radio			118.155	
CALLSIGN	EGSQ_R_TWR			Ground.	
LOCATION	Lat N051.47.000	Long W001.07.000		Elev. 37ft	
LOCATION GEO.	20nm NE of S.End A/P. 4nm S of C/L. CLN VOR. R192			Conspicuity	
CHART SOURCE	FSX/PlanG/reasearch	NAV AIDS	VOR CLN 115.550	QFE = QNH -1hPA	
METAR AIRPORT	EGMC or EGUW	ALTON PARK LANE - FOOTPATH - CROSSES CENTRE of RUNWAY.			
PUBLIC ON or NEAR the RUNWAY or TAXIWAY, HAVE RIGHT OF WAY OVER ALL A/C - GO AROUND or HOLD.					
RUNWAY	Headings 18 / 36	Dimensions 598m x 18m	Surface Grass	Airspace above is Class A 5500ft + LONDON TMA SOUTHEND CTA; CLASS D; A3500FT IS 4NM SW.	
AIRSPACE	CLASS G	Transition level 5500ft		TO THE NW. STARTING 13nm YOU ARE UNDER LONDON TMA	
CIRCUITS	1000'	ALL Circuits WEST. 18 RH. 36 LH - SEE SPECIAL RULES below.			
NO FLY	Clacton Town and Jaywick. See special rules for 18 approaches above				
HAZARDS	Sea Birds, along and off the coast, also birds over the Golf course				
HELICOPTERS	NO HELICOPTERS OR MICROLIGHTS.				
SPECIAL RULES	Runway 18. Remain 700' over houses, full glide approach. Runway 36 Immediate LEFT TURN - 330° (THROUGH THE GAP) to avoid houses.				



NOTE. **The inviting looking rectangle N EAST of the runway IS NOT THE AIRFIELD or the RUNWAY.**
U-tube video, T&G & Landing, 18 (watch and weep). <https://www.youtube.com/watch?v=kgqfAmOJKHk>
WHEN RECEIVING A SERVICE VIA CIX TEAMSPEAK PLEASE PUT YOUR A/C CALLSIGN AFTER YOUR NAME.



This is a very tricky A/F to land/depart to/from. Take great care. If in doubt **GO AROUND**. See SPECIAL RULES. **Do not be another expensive casualty!**

Yes, I know it is vatsim and not real world. But this airfield WILL challenge your airmanship skills. Rise to the challenge, **keep to the rules (repeated here, in case you missed them)**.

I would also advise a look at the video.

If you can make a 18 landing or a 36 Take Off correctly, first time, pat yourself on the back.

BUT NOTE SPECIAL RULES

Runway 18. Remain 700' over houses, FULL GLIDE APPROACH. - minimum noise

Runway 36. Immediate LEFT to avoid houses. - very tricky, turn early(ish), NOT LATE OTHERWISE LAND FROM (36) or DEPART TOWARDS (18) the SEA.

NO HELICOPTERS PERMITTED (noise).

DO NOT OVERFLY ANY PROPERTIES BELOW 2000'

OBSERVE TAXIWAY ROUTES AND HOLDS AT ALL TIMES, REPORTING POSITION/INTENTIONS

PILOTS: Please put your Callsign after you name on TeamSpeak.

THIS PUBLICATION for VIRTUAL USE - NOT TO BE USED FOR REAL WORLD OPERATIONS