

November 23

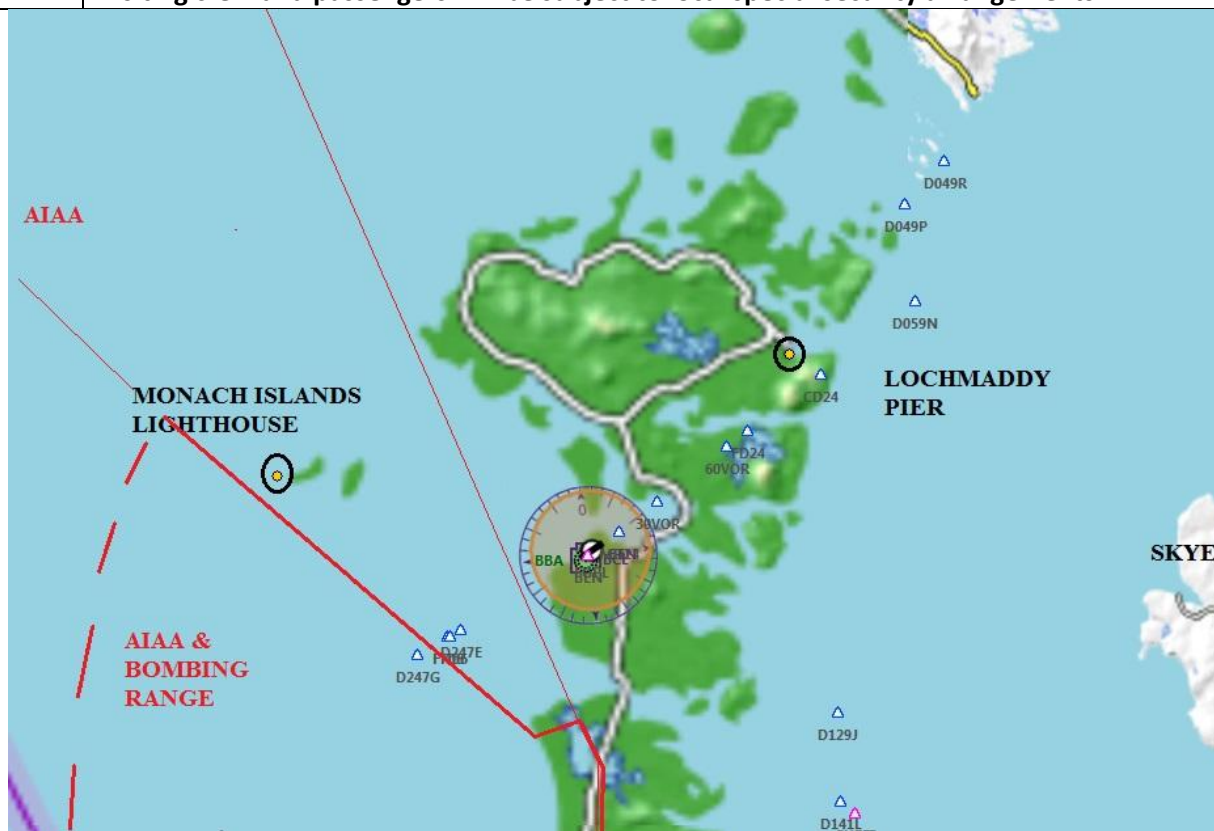
QNH

QFE

WIND

/

AIRFIELD NAME AND ICAO	<b>Benbecula</b>		<b>EGPL</b>	<b>Sc</b>
CALLSIGN (A/C RADIO)	Benbecula Tower/information		119.205	
CALLSIGN (ES/VATSIM)	EGPL_TWR/EGPL_I_TWR		Ground.	
LOCATION	Lat N057.28.50.000	Long W007.21.50.000	Elev. 19ft	
LOCATION GEOGRAPHIC	West side of Benbecula Island		VFR Conspicuity ---	
CHART SOURCE	NATS		App. 119.205	
METAR AIRPORT	EGPL133.950		QFE= QNH(METAR) - 0HPscls	
NAV AIDS (FSX / PLANG3)	NDB; BBA;401KHz.		VOR; BEN; 113.95	
RUNWAYS	Headings	Dimension	Surface & notes	
	06 / 24	1836m x 46m	Asphalt; <b>Preferred runways; Land 24; Dep. 06</b>	
	17 / 35	1220m x 46m	Asphalt	
AIRSPACE/TRANS ALT QNH	CLASS G	Transition level 3000ft	Airspace above is Class C FL195	
CIRCUITS HEIGHT / DIR.	BY PRIOR permission of ATC ONLY, as instructed.			
LOCAL HAZARDS	<p><b>ALL TAXIWAYS EXCEPT ALPHA ARE DISUSED</b> and liable to be blocked or hazardous to A/C.  <b>The area 2.2nm WEST is an AIAA.</b> Liable to be active by high speed, Mil A/C at low level.  <b>Including a large live bombing range to the SW.</b> ATC will advise.  <b>USE MARKED TAXIWAYS AND RUNWAYS; all grass and other areas unsafe for a/c and vehs.</b></p>			
HELICOPTER OPERATIONS	As for fixed wing unless advised by Tower			
SPECIAL RULES	<p><b>When ranges are active, 06 Arr. and 24 Dep. may be restricted or disallowed by ATC.</b>  The A/F may be used by Mil A/C at any time, with or without ATC.  Likewise Medivac and SAR operations. BOTH will take precedent over ALL other movements.  Runway 17/35, restricted to use by GA A/C unless 06/24 unavailable, due weak paving.  <b>The A/F is NOT LICENCED for bad weather (RVR) operations.</b></p>			
REMARKS	<p><b>There is NO MARKED parking on the apron, due to wind changes. GA A/C are advised to park with respect to current and forecast wind direction.</b>  <b>Visiting crew and passengers will be subject to local special security arrangements</b></p>			



**ALL PILOTS:** PLEASE PUT YOUR A/C CALLSIGN AFTER YOUR NAME.

