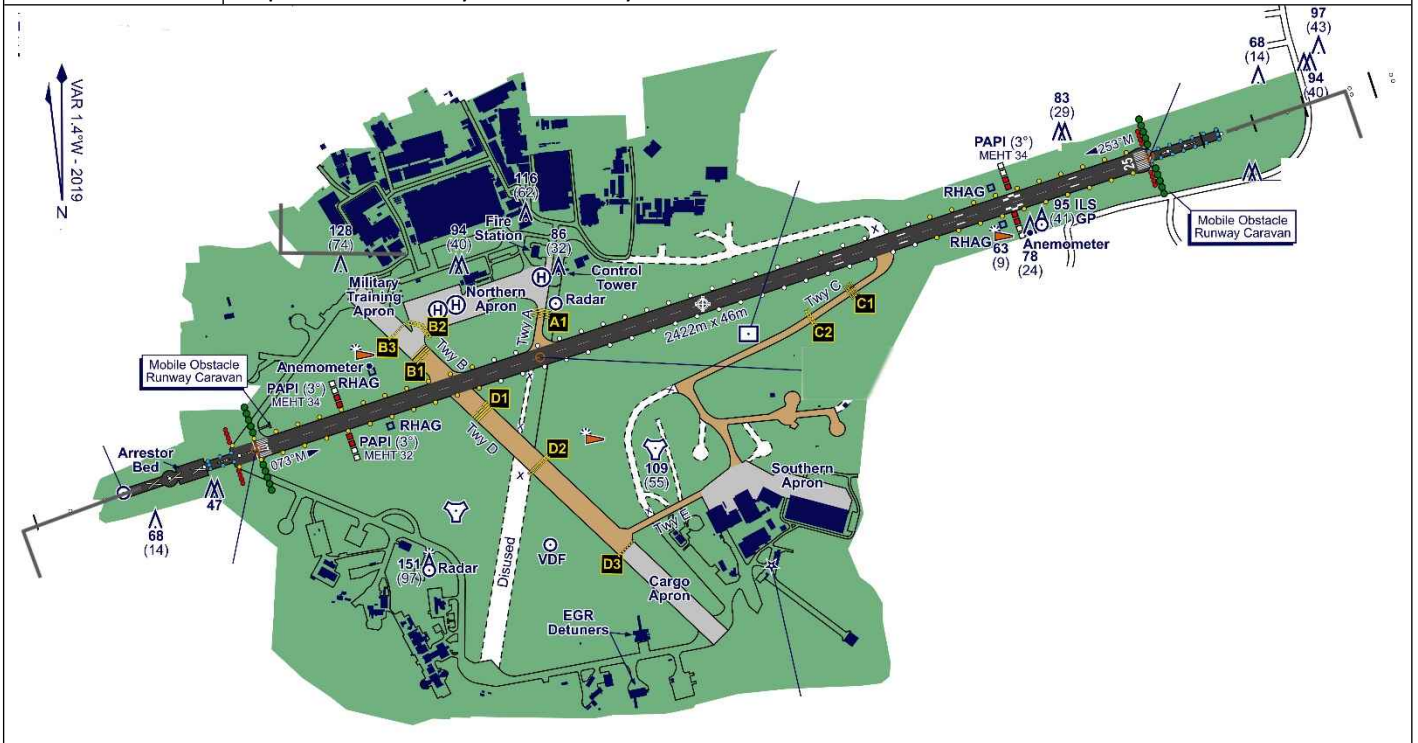
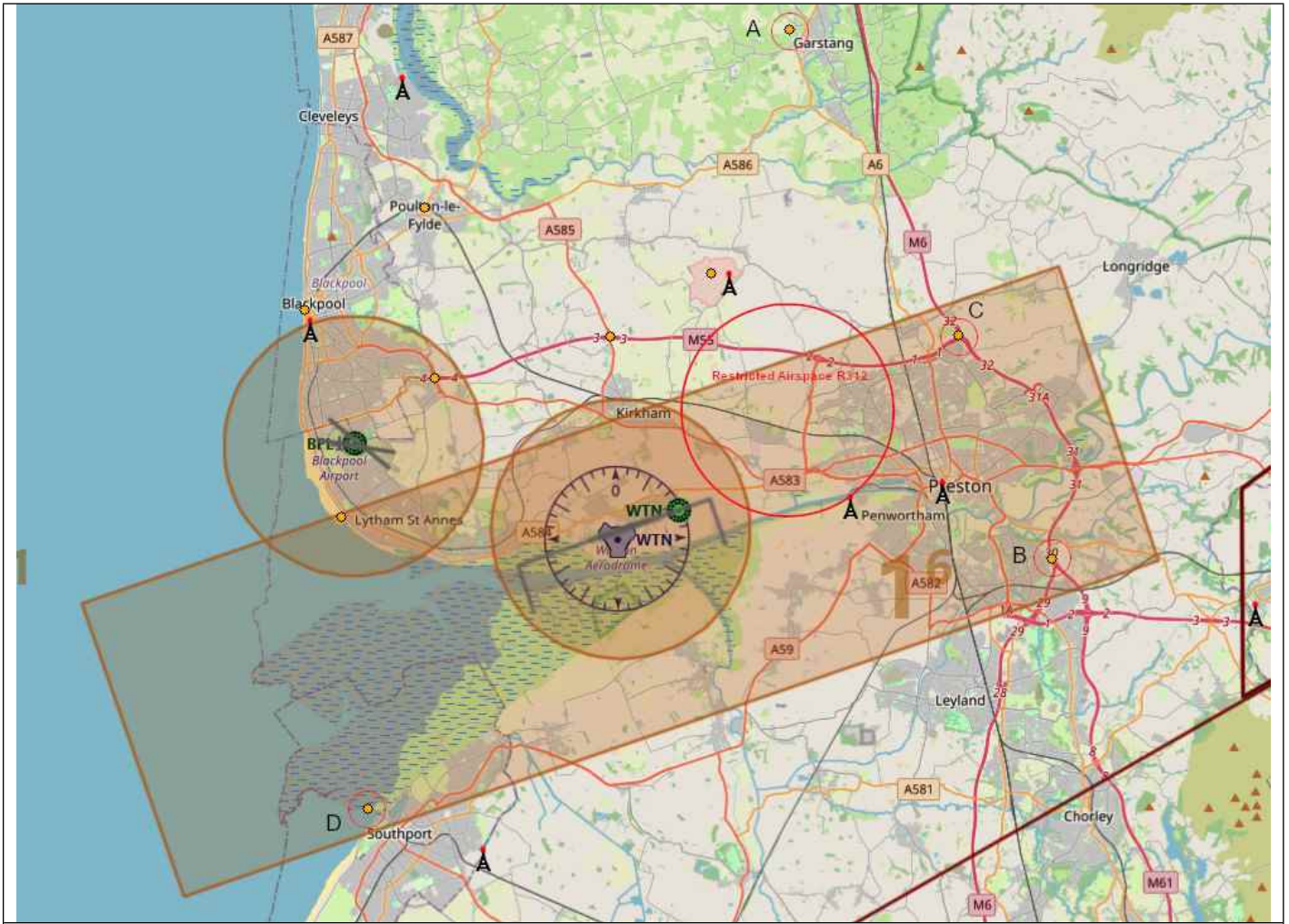


AIRFIELD NAME	February 25	<b>WARTON</b>		<b>EGNO</b>	<b>N</b>
CALLSIGN (A/C RADIO)	Warton Tower			130.805	
CALLSIGN (ES/VATSIM)	EGNO_TWR			Ground. N/A	
LOCATION	Lat N053 44 42	Long W002 53 02		Elev.55 Ft	
LOCATION GEOGRAPHIC	6 nm W of Preston			VFR Conspicuity ---	
CHART SOURCE	NATs			App.129.530	
METAR AIRPORT	EGNO 121.730	<b>Talkdown129.730</b>		QFE= QNH- 0 hPa	
NAV AIDS	NDB WTN 337.0		DME WTN(H) 113.20 (FSX only) ILS RWY26 IWQ 109.90		
RUNWAY	Headings	Dimension	Surface		
	07/25	2422m x 46m	Asphalt	PAPI 3°	
AIRSPACE/TRANS ALT QNH	CLASS D MATZ 3000 ft	Transition level 3000 ft	Airspace above is Class C Base Alt 19500 London Fl		
CIRCUIT HEIGHT / DIR.	1000 ft QFE		07 RH. 25 LH Circuits are south of 07/25		
NO FLY AREAS	NO OVERHEAD HOLDS. REMAIN CLEAR OF BLACPOOL ATZ and APPROACH, (on final, 25)				
LOCAL HAZARDS	<p>An ARRESTER CABLE system is at both ends of the runway, approximately 395M from each end. (Labelled RHAG on the AD Chart). GA A/C are advised to LAND AFTER the cables.</p> <p>DO NOT overfly the EGR Detuners, South of Hold D3 below 500 ft.</p> <p>Large flocks of birds are an all year round hazard.</p> <p><b>Final approach for RWY 25 Wharton and RWY 28 Blackpool converge at 2.5 miles from Wharton exercise caution when visually identifying Wharton</b></p>				
HELICOPTER OPERATIONS	Helicopter Landing Areas are located adjacent to Stands 1, 10, 11, 32, 33 and 34 on Northern Apron				
SPECIAL RULES	<b>No NORAD operations. VFR routing will avoid Blackpool ATZ and overflying EG R312.</b> Westerly departures avoid Lytham Easterly avoid Preston				





VRPs		LNМ	PlanG Lat	PlanG Long
A	Garstang Marina	53 54 19N 002 47 30W	53.905278	-2.791667
B	M6 Junction 30/M61	53 44 08N 002 38 56W	53.735556	-2.648889
C	M6 Junction 32/M55	53 48 27N 002 41 58W	53.807500	-2.699444
D	Southport Pier	53 39 19N 003 01 16W	53.655278	-3.021111

**ALL PILOTS: PLEASE PUT YOUR A/C CALLSIGN AFTER YOUR NAME.**

**NOT TO BE USED FOR REAL WORLD OPERATIONS**