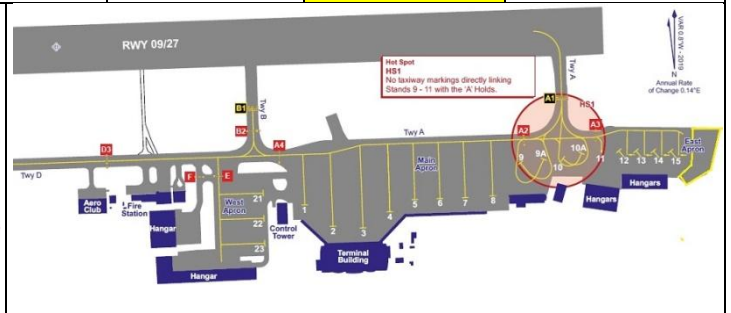
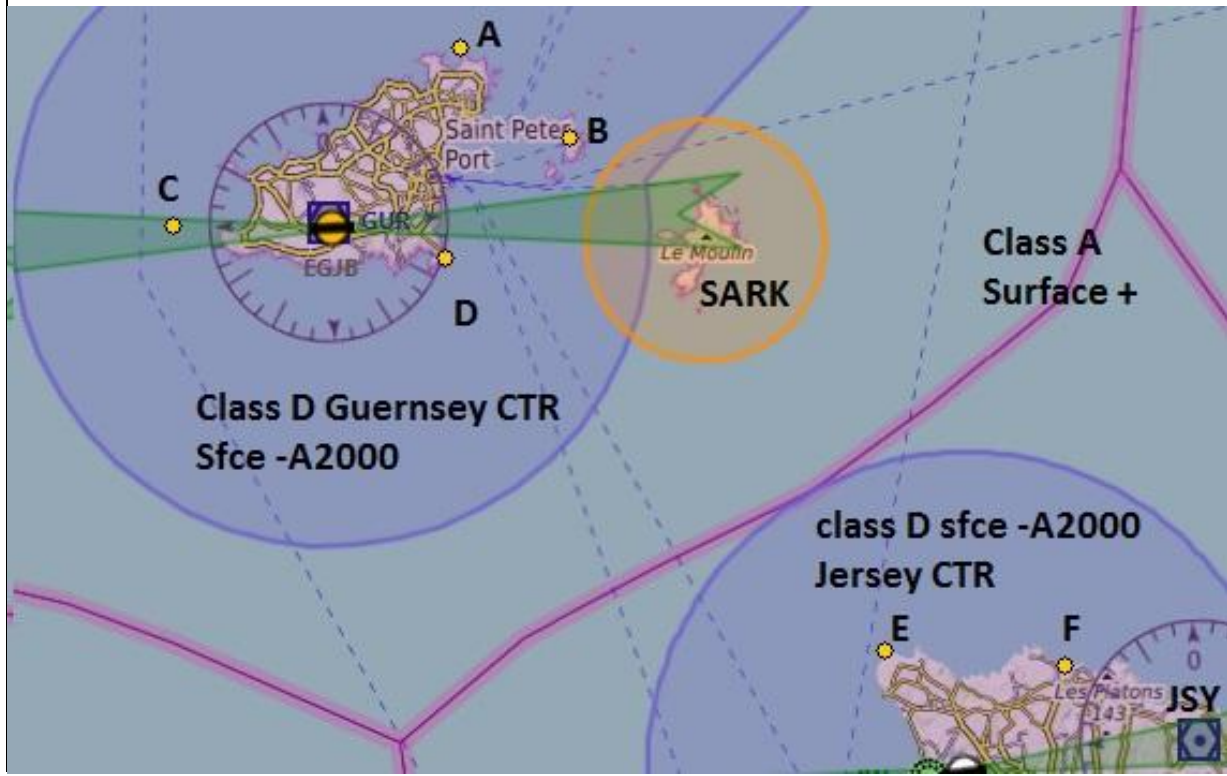
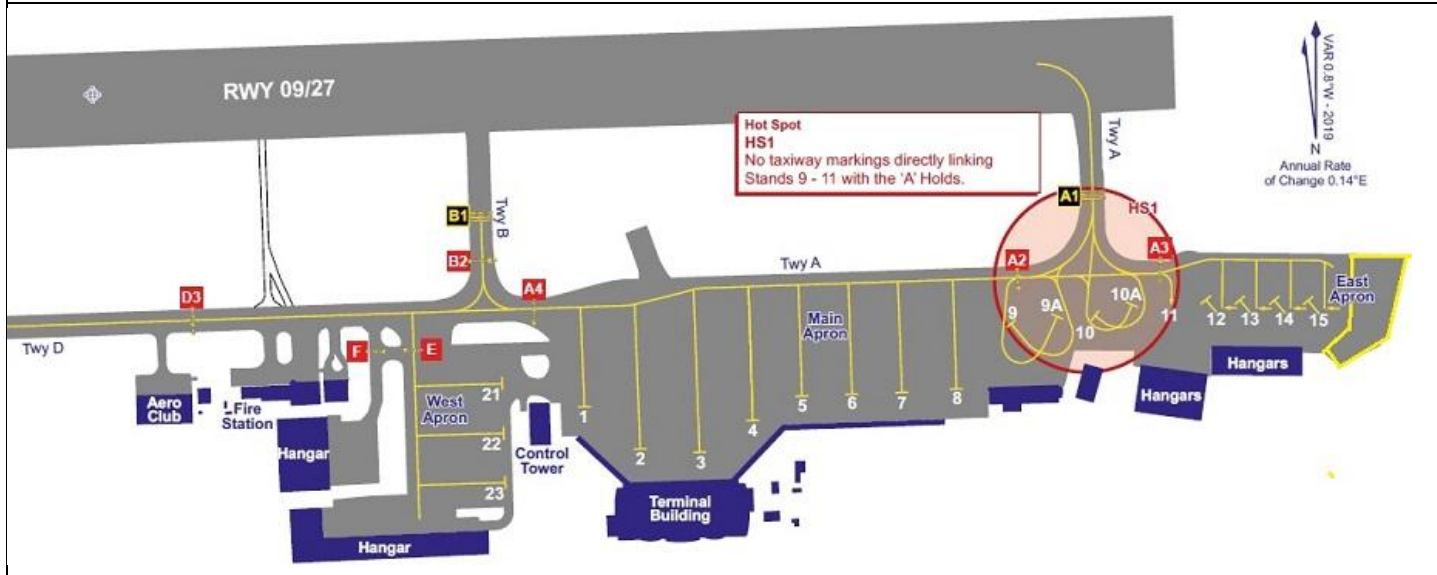
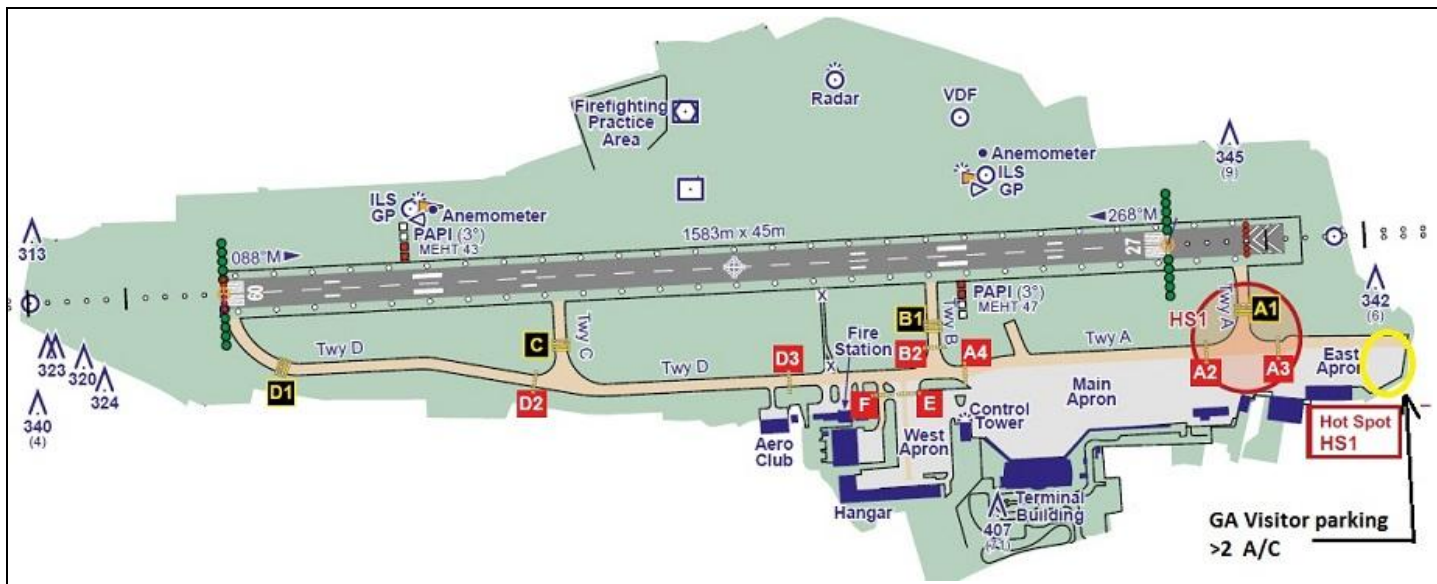


AIRFIELD NAME / ICAO	November 23	GUERNSEY		EGJB	W
CALLSIGN (A/C RADIO)	Guernsey Tower			119.955	
CALLSIGN (ES/VATSIM)	EGJB_TWR			Ground. 121.805	
LOCATION	Lat N049.26.06.000	Long W002.36.10.000		Elev.336 ft	
LOCATION GEOGRAPHIC	2.5nm WSW of St Peter Port			VFR Conspicuity	
CHART SOURCE	NATS	Jersey Control 125.205	Guernsey Radar 124.505 App 128.655	QFE= QNH-11 HPscIs	
METAR AIRPORT	EGJB 118.900	Channel Islands CTR: N050 W003; East About 4nm from French coast			
NAV AIDS	VOR/GUR109.40kHz	ILS 108.10 MHz	ALL GA / VFR A/C within the CTR will be SPECIAL VFR.		
RUNWAY	Headings	Dimension	Surface	You MUST contact Jersey Control BEFORE entry. Rpt '50N'	
	09 / 27	1583m x 45m	Grooved Asphalt	You will be under RADAR CONTROL. 125.205	
AIRSPACE	CLASS D Guernsey CTR 2000ft	Transition level 5000ft	Above is Class A Sfc+ Channel Isles CTR		
CIRCUITS	700ft QFE	VFR Circuits to the South. 27 LH, 09 RH.	VFR Flight Plans in & outbound, mandatory		
NO FLY	Within 3nm of SARK BELOW 2000ft QNH. Princess Elizabeth Hospital, 2nm ENE, BELOW 1000ft QFE				
LOCAL HAZARDS	Sea Birds are a constant Hazard. VFR take precedent over VFR. Taxi HOT SPOT. Between A1, A2 &A3. ALL GRASS AREAS UNSUITABLE FOR A/C.				
HELICOPTER OPERATIONS	As Directed or as Fixed Wing A/C. The PILOT is responsible for parking and taxiing safely with respect to other aircraft and his helicopters downwash.				
SPECIAL RULES	VFR A/C will NOT be allowed to fly within the Channel Islands Zone CTR or ATZs if Vis<1500M OR Cloud Base <600ft. (On VATSIM, go CAVOK). Night-time Special VFR flights are permitted. ALL GA A/C are to join FINAL approach at NOT LESS than A863ft / 500ft QFE, and MAINTAIN until intercepting the glidepath (PAPI lights/ILS). Departing GA A/C MUST climb straight ahead to MINIMUM A1836ft / 1500ft QFE, before turning.				
REMARKS	Guernsey Aero Club CAN ONLY accommodate TWO visiting A/C, Other GA/VFR A/C to park on EAST APRON, with care. If from EGJA FOR FUEL, taxi to main apron, park as advised. no landing fees.				

NAME	POSITION		Jersey VOR to NAME		Guernsey	Dinard
	GEO.	PlanG	(JSY) 112.20	(GUR) 109.40	(DIN) 114.30	
Alderney Lighthse	N49.43.45 W002.09.51	49.729119 -2.164233	354°/31NM	045°/24.5 NM		
Cap de la Hague	N49.43.00 W001.56.00	49.716666 -1.933333	011°/30.1 NM	058°/31.1 NM		008°/68NM
Carteret Lighthouse	N49.22.24 W001.48.24	49.373333 -1.806666	048°/13.1 NM	098°/31.5 NM		016°/48.6NM
Casquets Lighthouse	N49.43.24 W002.22.42	49.723333 -2.378333	339°/32.8 NM	028°/19.3 NM		353o/69NM
Corbiere Lighthouse	N49.10.47 W002.15.00	49.179722 --2.25000	255°/8.4 NM	139°/20.8 NM		350°/36.3 NM
Fort Le Marchant A	N49.30.32 W002.31.07	49.508888 -2.518611	316°/25.4NM	112°/2.9NM		
Fremont TV Mast F	N49.15.06 W002.07.53	49.251666 -2.131388	301°/3.8 NM	122°/21.6 NM		
Hanois Lighthouse C	N49.26.06 W002.42.09	49.435000 -2.702500	300°/29NM	269°/3.9 NM		337°/66.4NM
Heauville	N49.34.59 W001.48.07	49.583055 -1.801944	026°/23.7 NM	075°/32.6 NM		013°/60.6NM
Herm Island B	N49.28.18 W002.26.55	49.471686 -2.448738	320°/17.6NM	072°/6.4 NM		
Minquies	N48.58.00 W002.08.00	48.966666 -2.133333	195°/15.7 NM	135°/23.6 NM		357°/23NM
Noirmont Point Lhse	N49.09.55 W002.10.05	49.165277 -2.168055	237°/5.9 NM	135°/23.6 NM		357°/35NM
North West Corner E	N49.15.30 W002.14.50	49.258333 -2.247222	288°/8.2 NM	128°/17.6 NM		
Pointe de Rozel	N49.28.59 W001.50.59	49.483055 -1.849722	028°/17.5 NM	086°/29.6 NM		012°/54.5NM
Roches Douvres Lhse	N49.06.19 W002.48.53	49.105277 -2.814722	259°/31.1 NM	204°/21.6 NM		320°/42.5NM
South East Corner	N49.10.00 W002.02.00	49.166666 -2.033333	173°/3.3 NM	127°/27.7 NM		004°/34.9 NM
St Germain	N49.14.00 W001.38.00	49.233333 -1.633333	089°/16.3 NM	109°/40 NM		025°/42.7 NM
St Martins Point D	N49.25.18 W002.31.42	49.421658 -2.528316	306°/22.5NM	109°/3.1 NM		343°/53NM



ALL PILOTS: PLEASE PUT YOUR A/C CALLSIGN AFTER YOUR NAME. **NOT TO BE USED FOR RW OPERATIONS**



- Letters refer to highlighted VRPs on previous page.
- A. Fort Le Marchant
 - B. Herm Island
 - C. Hanois Light
 - D. St. Martins point
 - E. NW corner
 - F. Freemont TV mast