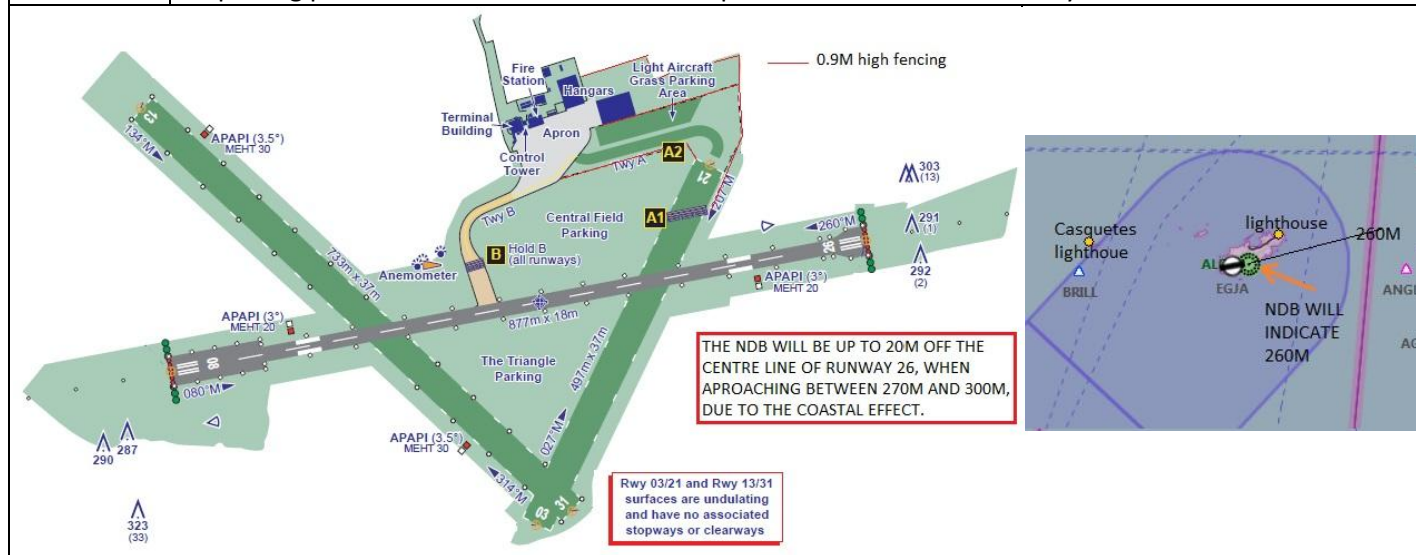
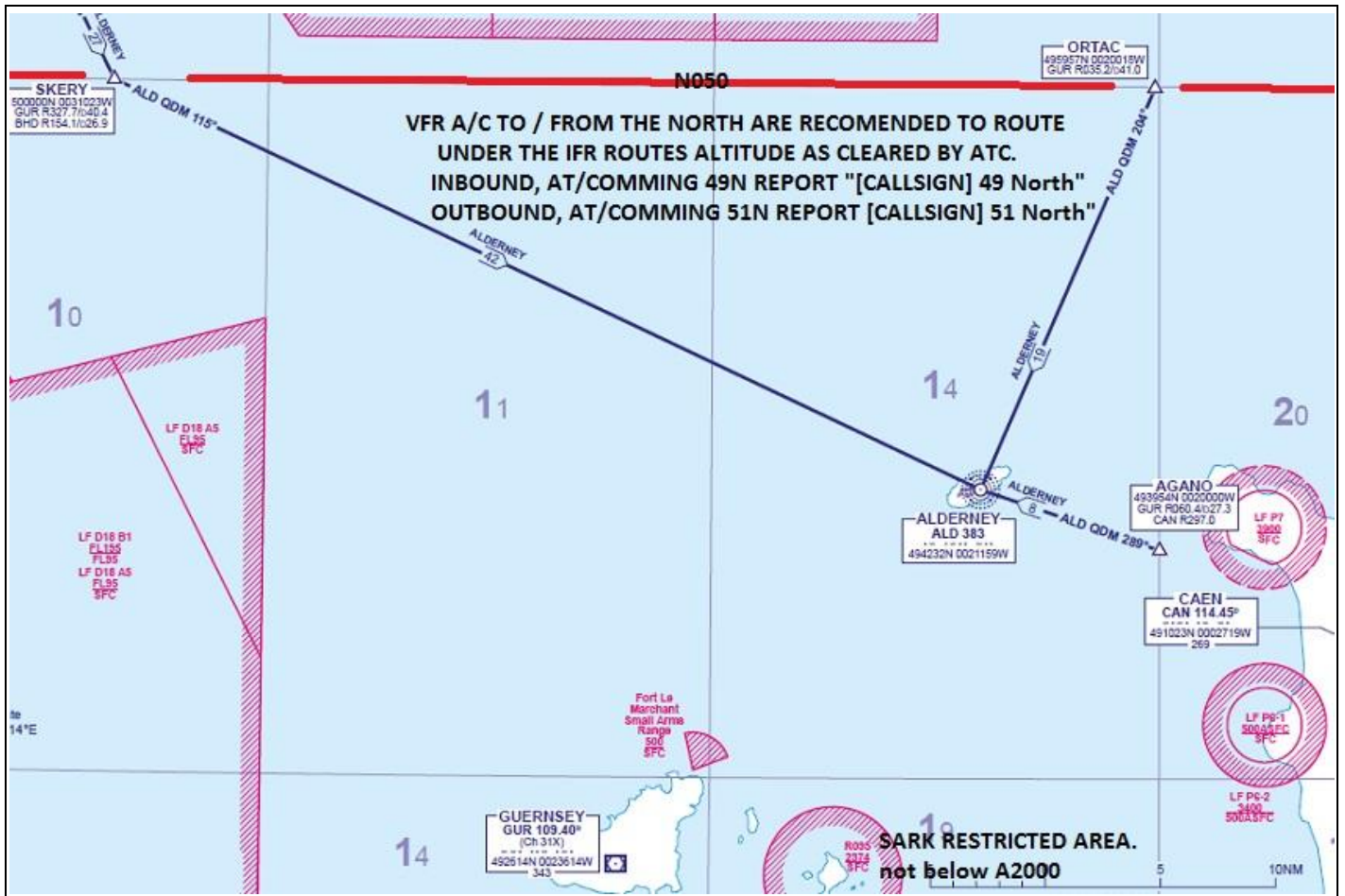


AIRFIELD NAME AND ICAO		November 23	<b>ALDERNEY</b>		<b>EGJA</b>	<b>W</b>
CALLSIGN (A/C RADIO)		Alderney Tower			125.355	
CALLSIGN (ES/VATSIM)		EGJA_TWR			APP. 128.650. Guernsey	
LOCATION		Lat N049.42.24.000	Long W002.12.52.000		Elev.290 ft	
LOCATION GEOGRAPHIC		1nm SW of St Annes, The Channel Islands			VFR Conspicuity ---	
CHART SOURCE		NATS	A/F inside Channel Islands CTR Class D.		Ground 130.505	
METAR AIRPORT		EGJJ Jersey. 134.680	ALL A/C WILL BE UNDER RADAR CONTROL		QFE= QNH- 9HPscls	
NAV AIDS		NDB; ALD 383 kHz. IM runway 26		From the NORTH. REMAIN NORTH OF 050°North until you have a <b>RADAR SERVICE from Jersey CONTROL; 125.205.</b>		
RUNWAYS	Headings	Dimension	Surface		Expect inbound via <b>Alderney or Casquets Lighthouse.</b>	
	08 / 26	877m x 18m	Asphalt		VFR A/C may be held at VRPs if IFR traffic imminent.	
	13 / 31	733m x 37m	Grass		Remain VMC at all times, report to ATC if difficult.	
	03 / 21	497m x 37m	Grass			
AIRSPACE	CLASS D Channel Island Zone. SFC to FL80 Zone Northern Boundary is 050°North.		Transition level 5000ft	Airspace above is Class A Channel Islands TMA. FL80+ Starts N050°		
CIRCUITS	700ft QFE	To West and South. 03, 32, 26 LH. 08, 14,21 RH <b>or as instructed.</b> See remarks. <b>03/21 NOT AVAILABLE for Circuit training. Expect to hold on ground or airborne for IFR A/C</b>				
NO FLY	DO NOT overfly St Annes BELOW 700ft QFE <b>DO NOT fly BELOW 2000ft QNH within 3nm of SARK. UNLESS AUTHORISED.</b> <b>Remain well clear of the Nuclear Power Station at Cap de la Hague</b>					
LOCAL HAZARDS	The Surface of BOTH Grass runways and taxi A, is rough and uneven. <b>Use EXTREEM CAUTION 100LL AVGAS, DUTY FREE FUEL IS AVAILABLE on ALDERNEY.</b> The thresholds of 03 and 31 are within 800ft of the cliff edge. Which may cause severe turbulence and SINKING on approach. Obstacles up to 300ft are within 300m either end of runway 08/26. <b>DO NOT fall below PAPIs on approach. Both GRASS RUNWAYS are undulating.</b>					
HELICOPTER OPERATIONS	Approach / Depart as fixed wing unless instructed otherwise by ATC. Circuits, W & S A700ft <b>THERE IS NO SET PARKING</b> for helicopters, space is limited, park well away from all taxiways and parking areas, or as instructed by ATC. If 'remote parking' is necessary, transport will be provided. When the A/P is busy, the field next to the hanger <b>may</b> be used by ATC for Helicopter parking.					
SPECIAL RULES	<b>Customs and Special Branch clearance and security checks apply to all flights.</b> VFR A/C will normally park North side of Taxi A. Or as ATC advice. <b>Caution ALL fencing.</b> ALL flights within the Channel Islands Zone will be controlled by Jersey Control (Radar). VFR A/C inbound and outbound should <b>report</b> at 52N (inbound) or 49N (outbound) VFR A/C inbound/outbound will be given routes to A/Ds, VRPs or Radio Nav Aids by ATC. <b>Scheduled/large A/C will enter/exit 08/26 via Taxi BRAVO ONLY</b>					
REMARKS	<b>CAUTION.</b> When using <b>ALD NDB</b> as an approach aid from the south, the signal will be offset up to 20 degrees by the coast. Boundary Fences are 0.9M high and a hazard to low wing A/C VFR A/C, INBOUND/CIRCUITS for runway 26, should report passing <b>the lighthouse</b> , on final for 26. IF ATC authorise circuits to the NORTH (Pilots training). <b>DO NOT</b> overfly the island, inland of the coast. Departing pilots are to ensure all chocks and pickets are safe and secure by the fence					





**PILOTS: PLEASE PUT YOUR A/C CALLSIGN AFTER YOUR NAME. NOT TO BE USED FOR REAL WORLD OPERATIONS**