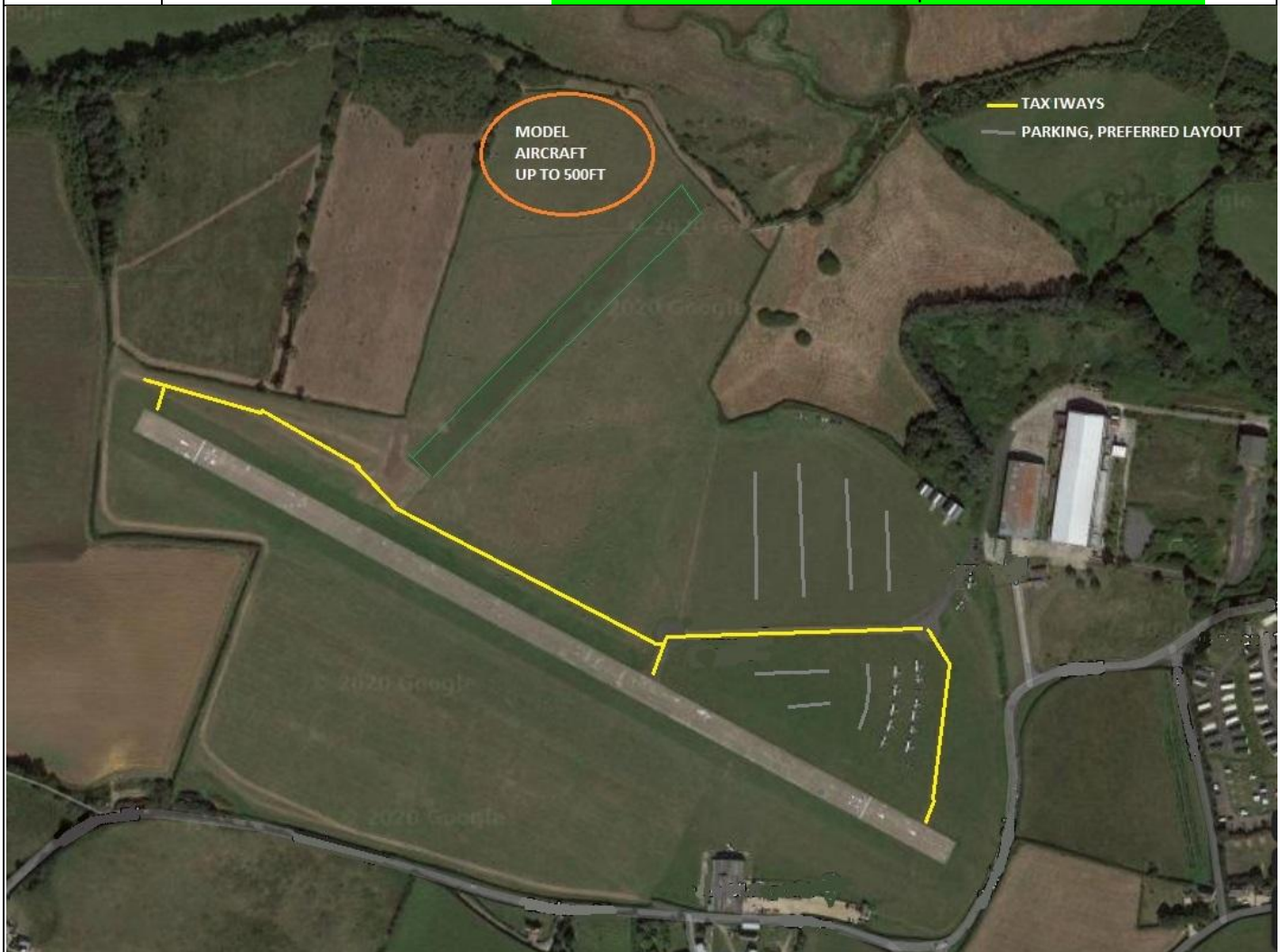


AIRFIELD NAME AND ICAO		November 23	BEMBRIDGE		EGHJ	South
CALLSIGN (A/C RADIO)		Bembridge Radio			123.255	
CALLSIGN (ES/VATSIM)		EGHI_R_TWR			APP. -----	
LOCATION		Lat N050.40.40.000	Long W001.06.41.000		Elev. 52ft	
LOCATION GEOGRAPHIC		1.5nm SW of Bembridge IOW			Conspicuity ----	
CHART SOURCE	PlanG/FSX/CIX\links\Airfield locations	NO FUEL ON AIRFIELD		App.		
METAR AIRPORT	EGHI 130.880	DO NOT CALL BEMBRIDGE AT MORE THAN 10nm			QFE= QNH-2HPscs	
NAV AIDS (FSX / PLANG3)	NDB; IW 426.00kHz NOT RW		EGHN Sandown is 3nm SW. Runway heading 05 / 23. WHEN DEPARTING ON 30 MAKE AN EARLY TURN NORTH, AWAY FROM SANDOWN			
RUNWAYS	Headings	Dimension	Surface			
	12 / 30	837m x 23m	Concrete			
	05 / 23	390m x 25m	Grass Only if main runway Wind out of limits.			
AIRSPACE	CLASS	Trans level A3000	Airspace above is Class C LONDON FIR FL195			
CIRCUITS	1000ft QFE	Circuit to NORTH; 30 RH; 12 LH This is an Unlicensed Airfield				
NO FLY	Avoid ALL built up areas especially Bembridge, Sandown, Brading and St Helens.					
LOCAL HAZARDS	SEA BIRDS, Grass strip & grass areas, especially after rain. Taxiing A/C walking to/from own A/C					
HELICOPTER OPERATIONS	Not above 700ft within 4nm of A/D. do not hover-taxi or park near other A/C, park as shown on chart below. Caution Pilots / passengers on parking areas.					
SPECIAL RULES	ALL A/C should join overhead at 2000ft. Departing A/C avoid overflying built up areas and villages. Park on NORTH side of main runway. Parallel grass strip to the SOUTH is PPR					
REMARKS	A/D can occasionally get busy, Observe Standard overhead join procedures to avoid conflict with other traffic. NO FUEL AVAILABLE FOR SAFETY OHJs at discretion of pilot. - PLEASE ANNOUNCE.					



PILOTS: PLEASE PUT YOUR A/C CALLSIGN AFTER YOUR NAME. NOT TO BE USED FOR REAL WORLD OPERATIONS