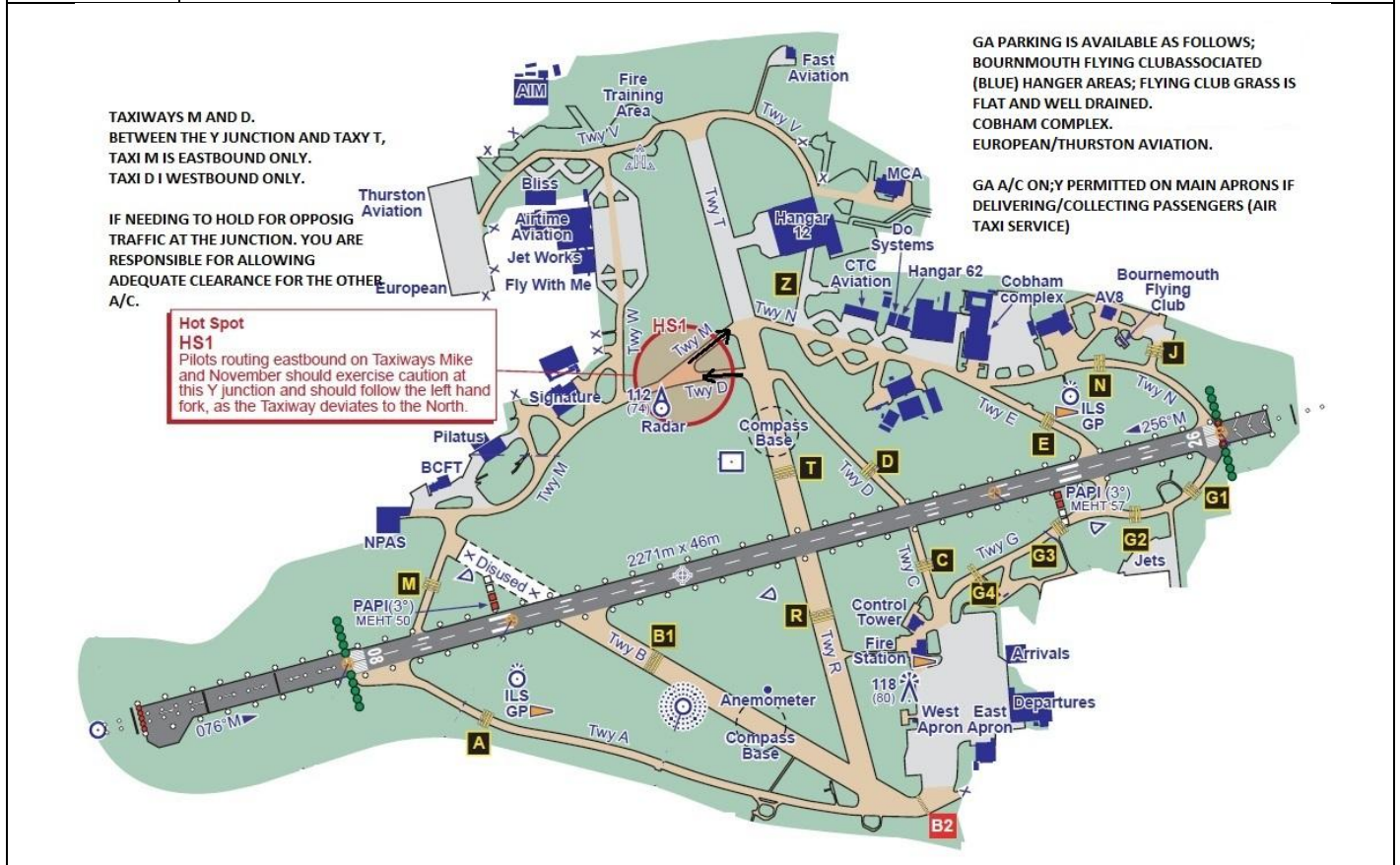
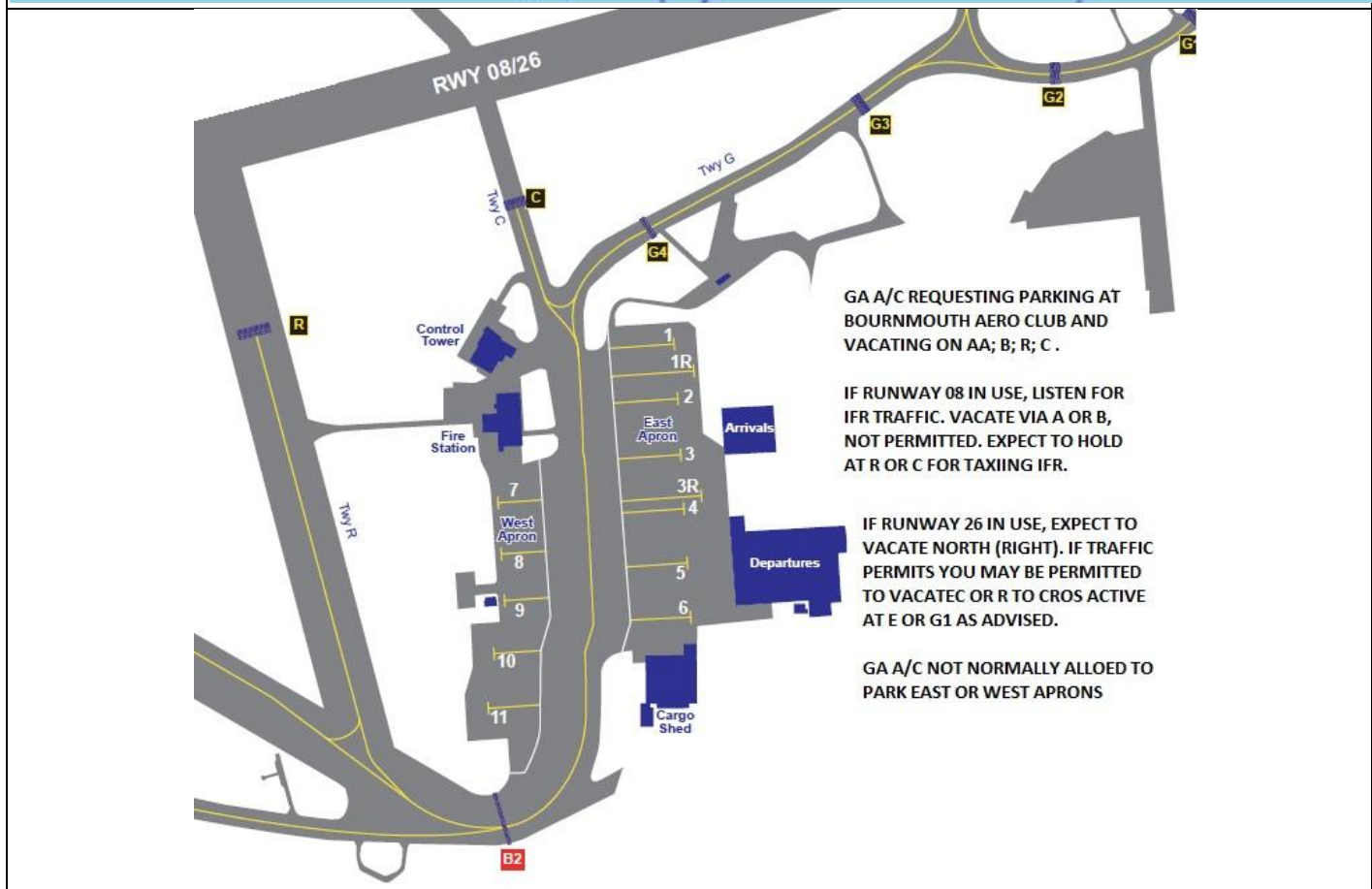
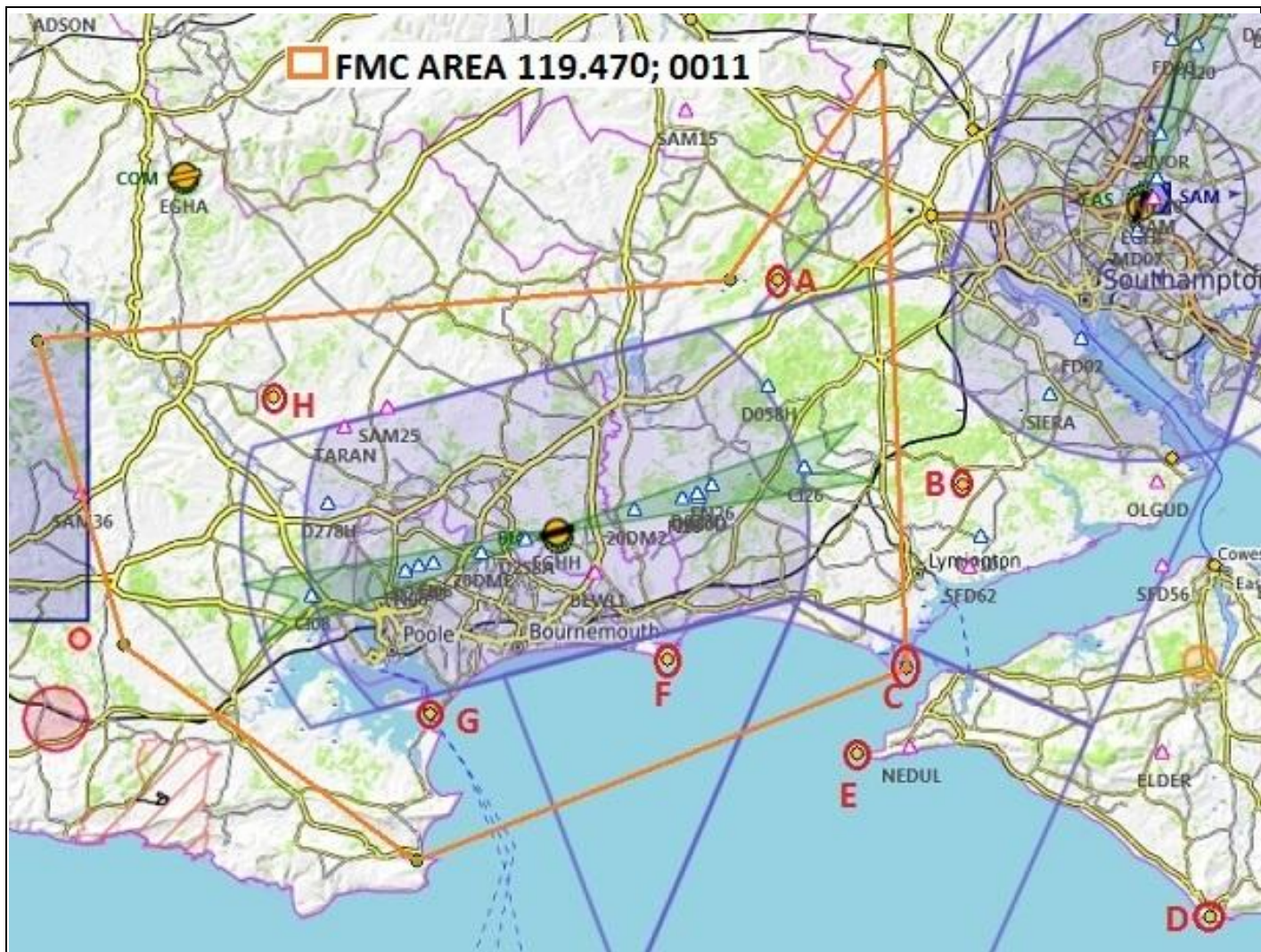
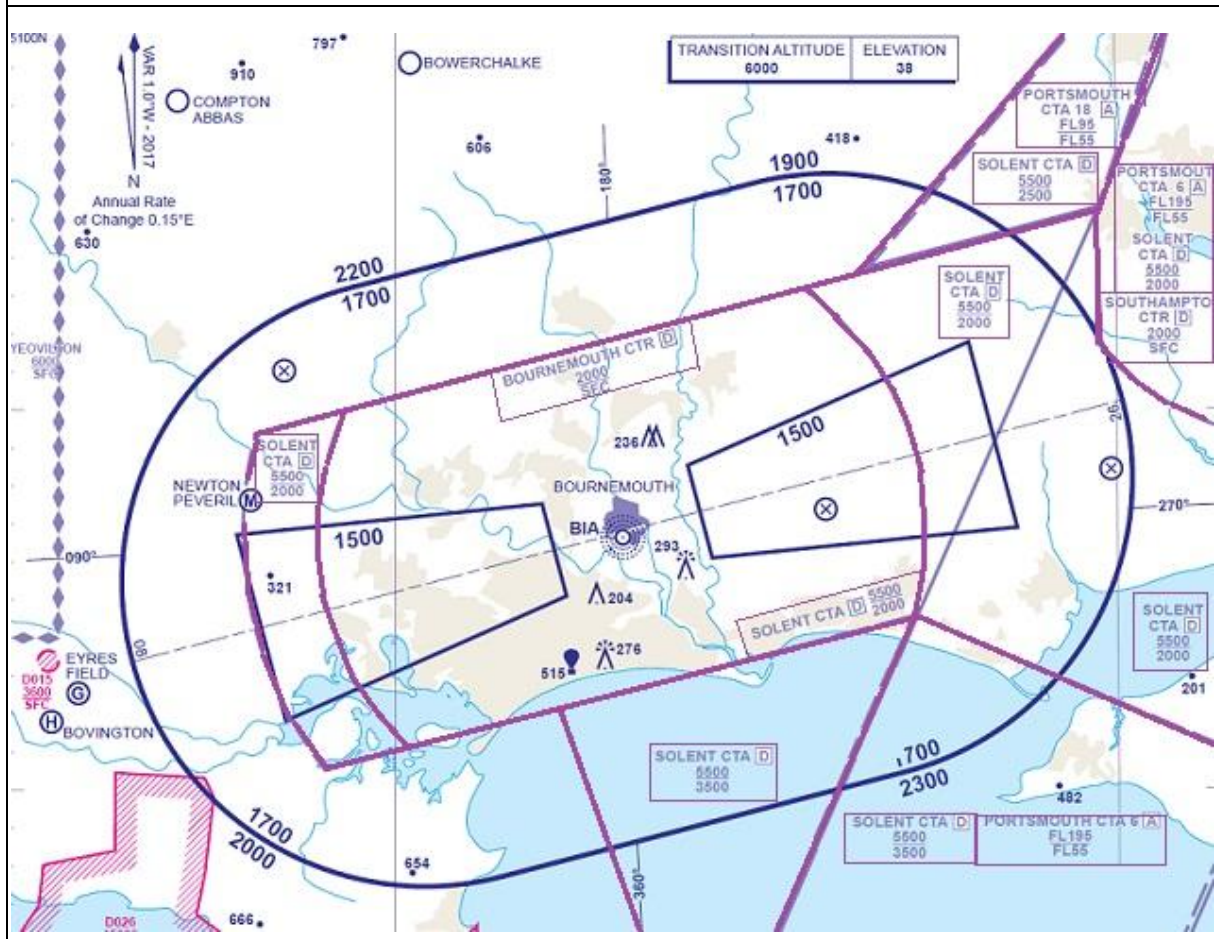
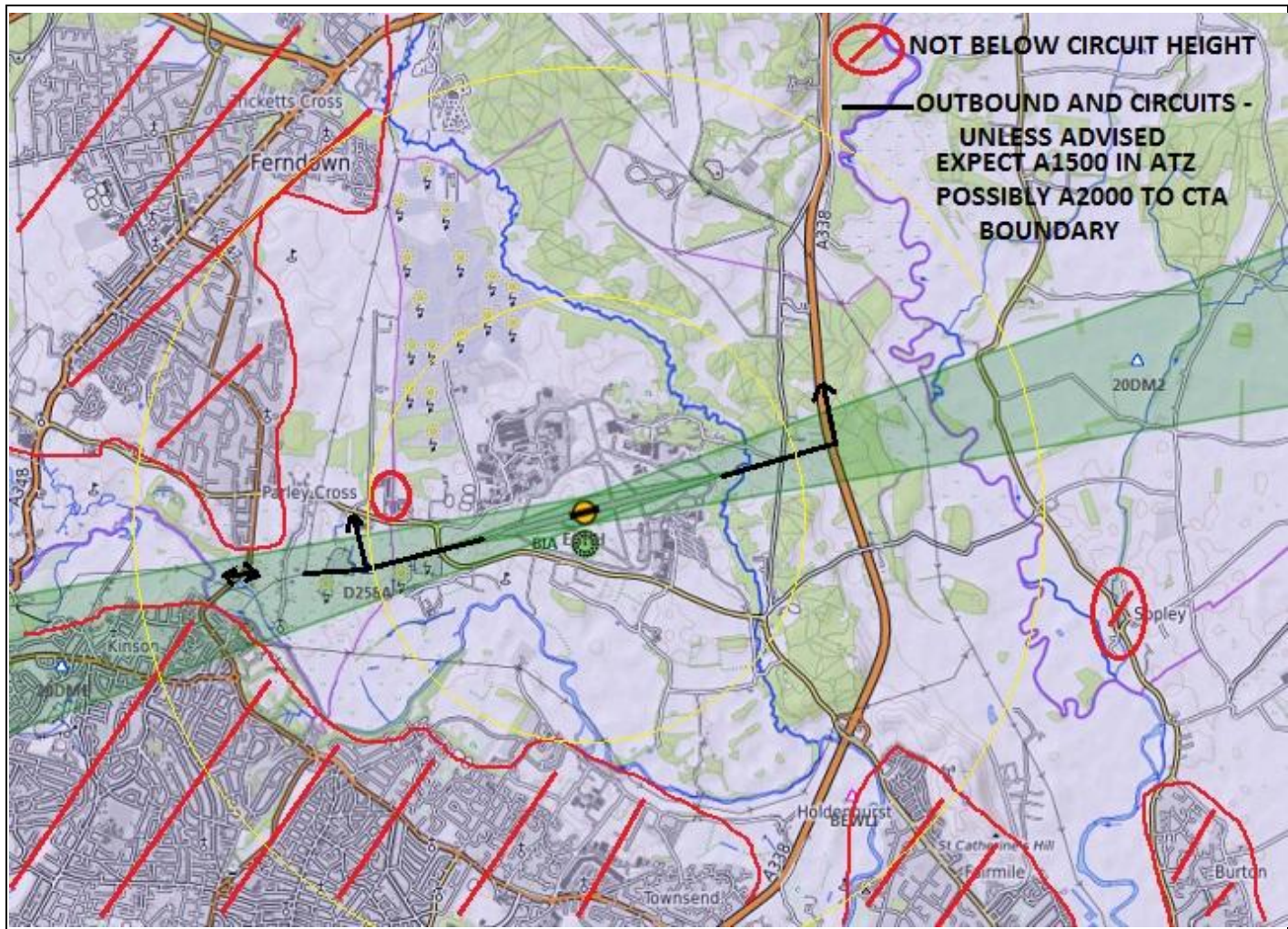


AIRFIELD NAME AND ICAO		November 23	BOURNEMOUTH	EGHH	South
CALLSIGN (A/C RADIO)		Bournemouth Tower			125.605
CALLSIGN (ES/VATSIM)		EGHH_TWR			APP. 119.470
LOCATION		Lat N050.46.48.000	Long W001.50.33.000	Elev. 38ft	
LOCATION GEOGRAPHIC		3.5nm NNE of Bournemouth			Conspicuity 7010
CHART SOURCE		NATS	Director 118.655 / Radar 119.480		Ground 121.705
METAR AIRPORT		EGHH 133.730	NORDO A/C at discretion of ATC		QFE= QNH
NAV AIDS (FSX / PLANG3)		NDB BIA 339.0kHz	ILS/ I-BH/I-BMH 110.500mHz		
RUNWAYS	Headings	Dimension	Surface		
	08 / 26	2271m x 46m	Asphalt/Concrete		
AIRSPACE	CLASS D CTR	Transition level 6000ft	Airspace above Class D A2000 Solent CTA		
CIRCUITS	1200ft QFE Jets, 1500ft	Normally, NORTH. 08 LH. 26 RH. May be varied by ATC. After departure NO TURNS UNTILL ABOVE 700ft QNH			
NO FLY	ALL built up areas below A2000. GA A/C to expect NOT ABOVE A1500 within the ATZ.				
LOCAL HAZARDS	Large A/C will normally use R or T, with Inbound and outbound BACKTRACK OF THE RUNWAY. LAND AND SEA BIRDS. MODE Charlie is NOT to be used to/from the Runway (i.e. during taxiing).				
HELICOPTER OPERATIONS	Wheeled helicopters will ground taxi, using taxiways and runway. All other helicopters will HOVER taxi using taxiways and runway. Helicopters will alight and depart as directed by ATC. Inbound/outbound routing as per ATC. AVOID overflying ALL parked A/C. Helicopter circuits NORTH of the runway at A700ft				
SPECIAL RULES	Taxiway Bravo used with ATC approval ONLY. ALL OUTBOUND A/C Say where parked, on 1st contact GA A/C will vacate as instructed, outbound expect to use N and M taxiways. GA A/C parking at - Bournemouth flying club/Cobham complex; European pan or Fast Aviation.				
REMARKS	If flying in the FMC, MONITOR APP on (119.470), squawk 0011 (listening code). See chart below The following VRPs will be used for VFR A/C. A. Stoney Cross (Disused A/D); B. Beaulieu Disused A/D; C. Hurst Castle; D. St Catherine's Point; E. Needles Lighthouse; F. Hengistbury Head; G. Sandbanks; H. Tarrant Rushton (Disused A/D) Expect some of the Southampton VRPs to be used as well.				







**PILOTS:
PLEASE PUT
YOUR A/C
CALLSIGN
AFTER YOUR
NAME.**

**NOT TO BE
USED FOR
REAL WORLD
OPERATIONS**