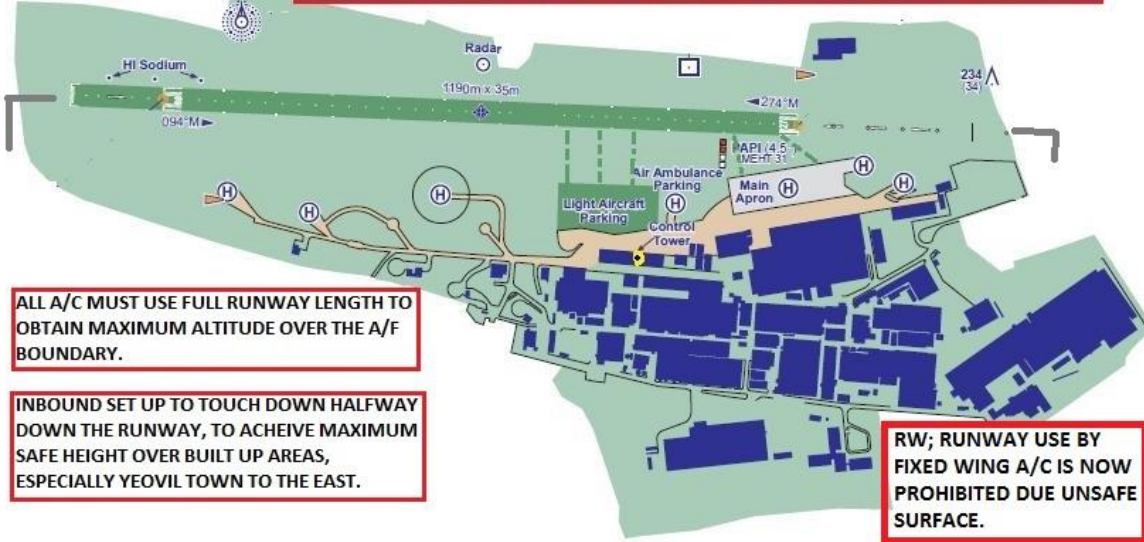


AIRFIELD NAME AND ICAO		November 23	WESTLAND / YEOVIL		EGHG	W
CALLSIGN (A/C RADIO)		Westland Tower/ Westland Information			125.405	
CALLSIGN (ES/VATSIM)		EGHG_TWR / EGHG_I_TWR			Ground.	
LOCATION		Lat N050.56.24.000	Long W002.39.31		Elev. 200ft	
LOCATION GEOGRAPHIC		1nm W of Yeovil. 4NM South of RN Yeovilton			VFR Conspicuity ---	
CHART SOURCE	NATS	NO NORDO A/C			App. 130.805	
METAR A/P	EGTE 119.330	NO DEADSIDE JOINS or OVERHEAD JOINS			My QFE= QNH-6 HPscIs	
NAV AIDS	NDB/ YYL 343kHz	VOR/ YVL 109.05MHz		ALL A/C, DO NOT OVERFLY BUILT UP AERAS EAST AND WEST BELOW 1000FTQFE. INBOUND TOUCH DOWN NOT BEFORE HALF WAY ALONG RUNWAY		
RUNWAYS	Headings	Dimension		Surface		
	09 / 27	1190m x 35m		Grass		
AIRSPACE	CMATS	Trnsitn A3000	Airspace above CMATZ. YEOVILTON AIAA UP TO A6000			
CIRCUITS	1000ft QFE	ALL Circuits to the South. 27 LH. 09 RH. SEE CHARTS AND RULES, BELOW.				
NO FLY	NORTH within the ATZ below 1500ft: NO FIXED WING or VISITING HELIO CIRCUITS					
LOCAL HAZARDS	Bird Concentrations ALL YEAR. High ground 2.5nm SW (442ft QNH) with Radio mast (528ft QNH) A/F is within a built-up area. Much of which is civilian. NOISE AVOIDANCE is required.					
HELICOPTER OPERATIONS	Same procedures as Fixed Wing. EXCEPT. Due noise sensitive area beyond the Eastern boundary, LOW 09 departures and low 27 late Base legs are prohibited. SEE BELOW AND ABOVE 27 arrivals should aim to touch down on the runway opposite the control tower.					
SPECIAL RULES	NOTE: RW; RUNWAY USE BY FIXED WING A/C IS NOW PROHIBITED. - UNSAFE SURFACE! INBOUND Joins from the SOUTH only. – SEE CHART - Plan final to land halfway along runway. OUTBOUND REMAIN ON C/L until MIN. 600ft on climb-out. Easy if using FULL RUNWAY. Runway has undulating surface, caution taxiing fixed wing. Propeller strikes. Runway can become waterlogged after heavy rain. Plan a HIGH approach to reduce noise. Hangers, Trees and Houses pose collision hazards as well as causing ground air turbulence.					
REMARKS	EGHG is INSIDE RNAS Yeovilton CMATZ – Sfc – 3000ft QNH. NOT ABOVE 1000FT QFE/A1300 IN ATZ					

MOST OF THE GRASS SOUTH OF THE RUNWAY CAN BE USED WITH CARE, 'BEST/SAFEST' TAXI AREA FOR FIXED WING IS OPOSITE A/C PARKING AN EAST OF THE PAPIs TO MAIN APRON.



ALL A/C MUST USE FULL RUNWAY LENGTH TO OBTAIN MAXIMUM ALTITUDE OVER THE A/F BOUNDARY.

INBOUND SET UP TO TOUCH DOWN HALFWAY DOWN THE RUNWAY, TO ACHIEVE MAXIMUM SAFE HEIGHT OVER BUILT UP AREAS, ESPECIALLY YEOVIL TOWN TO THE EAST.

RW; RUNWAY USE BY FIXED WING A/C IS NOW PROHIBITED DUE UNSAFE SURFACE.

PILOTS: PLEASE PUT YOUR A/C CALLSIGN AFTER YOUR NAME.

NOT TO BE USED FOR REAL WORLD OPERATIONS

