

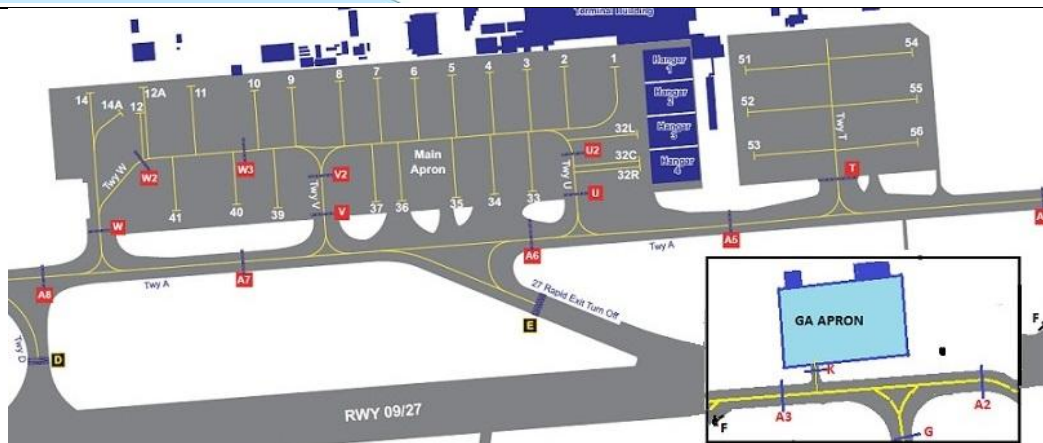
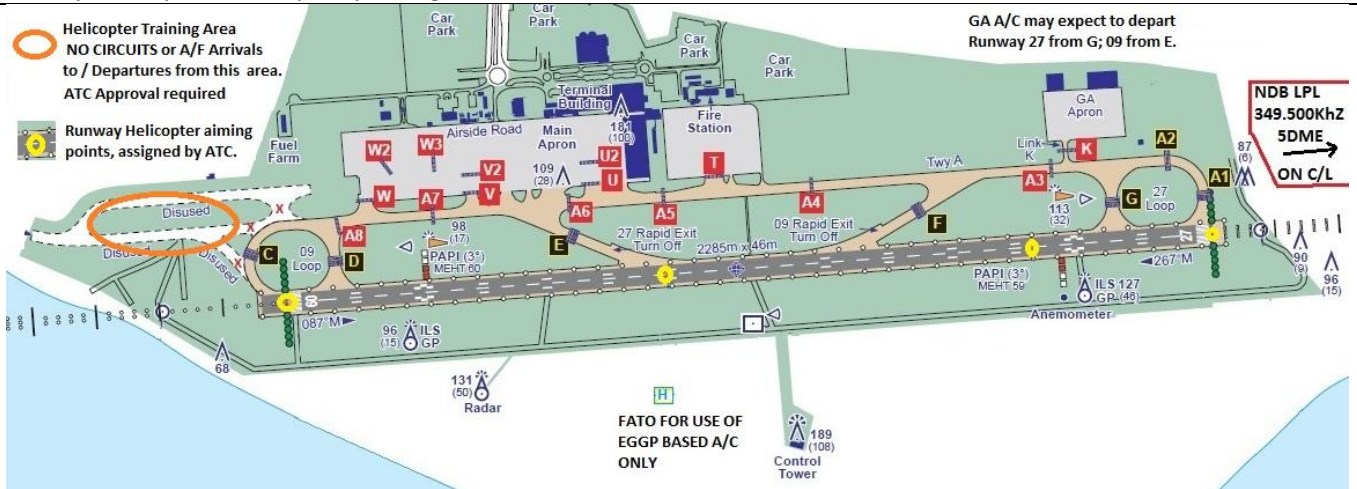
AIRFIELD NAME AND ICAO		November r 23	LIVERPOOL		EGGP	North
CALLSIGN (A/C RADIO)		Liverpool Tower			126.355	
CALLSIGN (ES/VATSIM)		EGGP_TWR			Ground. 121.955	
LOCATION		Lat N053.20.01.000	Long W002.50.59.000		Elev. 81ft	
LOCATION GEOGRAPHIC		6.5nm SE of Liverpool			VFR Conspicuity ---	
CHART SOURCE		NATS	EGGP_DIR 118.455		RDR. 119.855	
METAR AIRPORT		EGGP 124.330	ILS 111.750		QFE= QNH(METAR) - 2 HPscIs	
NAV AIDS (FSX / PLANG3)		NDB; LPL 349.50 4nm to 27 nmbrs			INBOUND/OUTBOUND VFR normally via VFR LANES & NESTON LANE LFA. SHIP CANAL via RUNCORN Bridge may be available. All A1500	
RUNWAYS	Headings	Dimension	Surface & notes			
	09 / 27	2285m x 46m	Asphalt			
AIRSPACE	CTR Sfc-2500 CLASS D	Trans 5000ft	Airspace above Class D Alt 2500-5500 CTA			
CIRCUITS	NOT BELOW 1500ftQFE	Variable circuits as instructed by ATC			NO OVERHEAD JOINS	
NO FLY AREAS	AS far as possible – STANLOW OIL REFINERY , 4nm South of the A/D. Strict lane flying essential. Avoid overflying Chemical works 1nm south of Runcorn bridge. DO NOT FLY South of LPL					
LOCAL HAZARDS	BIRD HAZARDS are common at any time, in particular, large flocks descending to the grass areas. A/C from the SOUTH, avoid chemical works on South bank of the Mersey, 1nm south of NDB					

HELICOPTER OPERATIONS Parts of manoeuvring area can be authorised by ATC for take offs and landings. Active runway threshold is a designated aiming point.

ARRIVALS will be instructed to the active threshold or to make a 'fixed wing approach', flaring to ground / hover taxi within the fixed wing touchdown zone. Arrivals / departures to / from the Alpha taxiway **ONLY** if approved by ATC. Limited training may take place on and around disused taxiway and Grass area WEST of Hold C, with ATC approval. Helicopters must remain clear of the runway c/l and boundary fence.

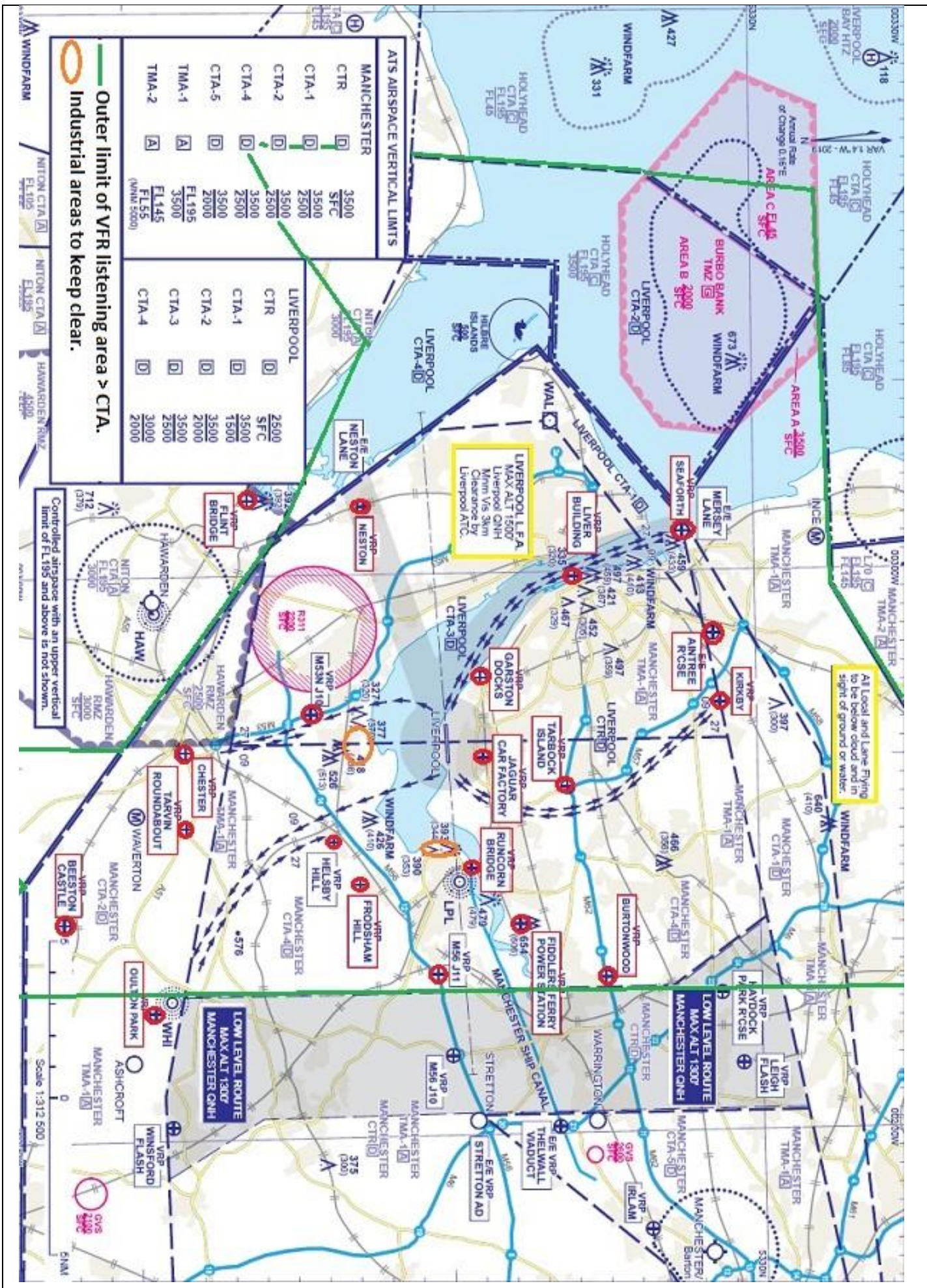
Wheeled helicopters **will use taxiways**; **light helicopters MUST hover taxi USING TAXIWAYS**

SPECIAL RULES **START UP** request or **STARTED** notification is required with **A/C location (stand/apron)**. **GRASS** areas are unavailable to all A/C. **LANDING A/C Vacate as advised OR taxi to end of runway.** **UNLESS OTHERWISE INSTRUCTED by ATC**, ALL VFR arrivals / departures via designated VFR lanes. **DO NOT** enter the CTR without clearance from ATC. VFR Entry / exit routes, not above 1500ft QNH. You may be required to report passing relevant 'lane VRPs'.



PILOTS:
PLEASE PUT YOUR A/C CALLSIGN AFTER YOUR NAME.

NOT TO BE USED FOR REAL WORLD OPERATIONS



— Outer limit of VFR listening area > CTA.
 Industrial areas to keep clear.

ATS AIRSPACE VERTICAL LIMITS	
MANCHESTER	
CTR	3500 SFC
CTA-1	3500
CTA-2	3500
CTA-4	3500
CTA-5	3500
TMA-1	2000
TMA-1	3500
TMA-2	FL145
	FL55 (MVA 5000)
LIVERPOOL	
CTR	2500 SFC
CTA-1	3500
CTA-2	1500
CTA-2	3500
CTA-3	2000
CTA-4	3500
	2500
	3000
	2000

All Local and Lane Flying to be below cloud and in sight of ground or water.

Controlled airspace with an upper vertical limit of FL195 and above is not shown.

Scale 1:312 500