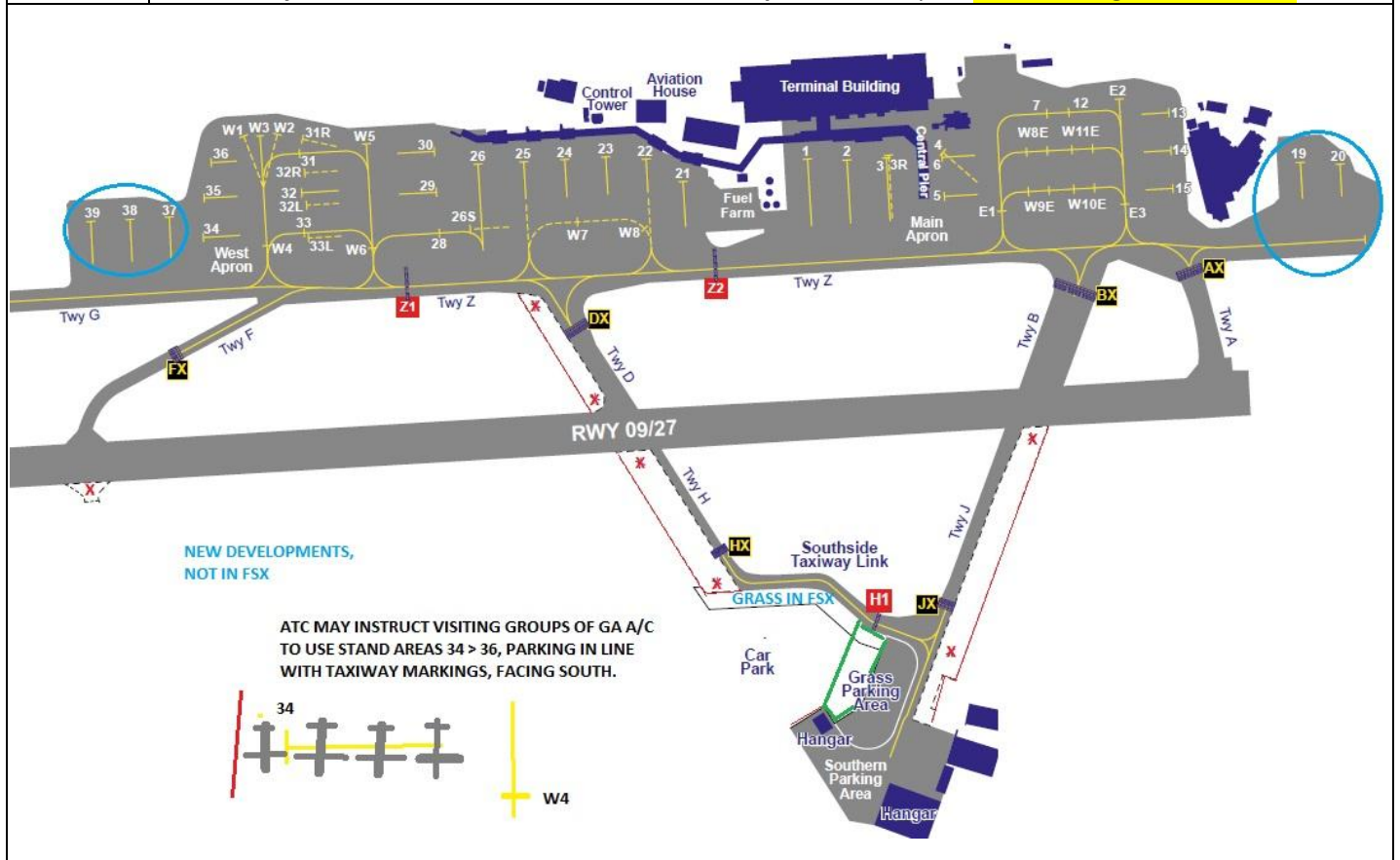
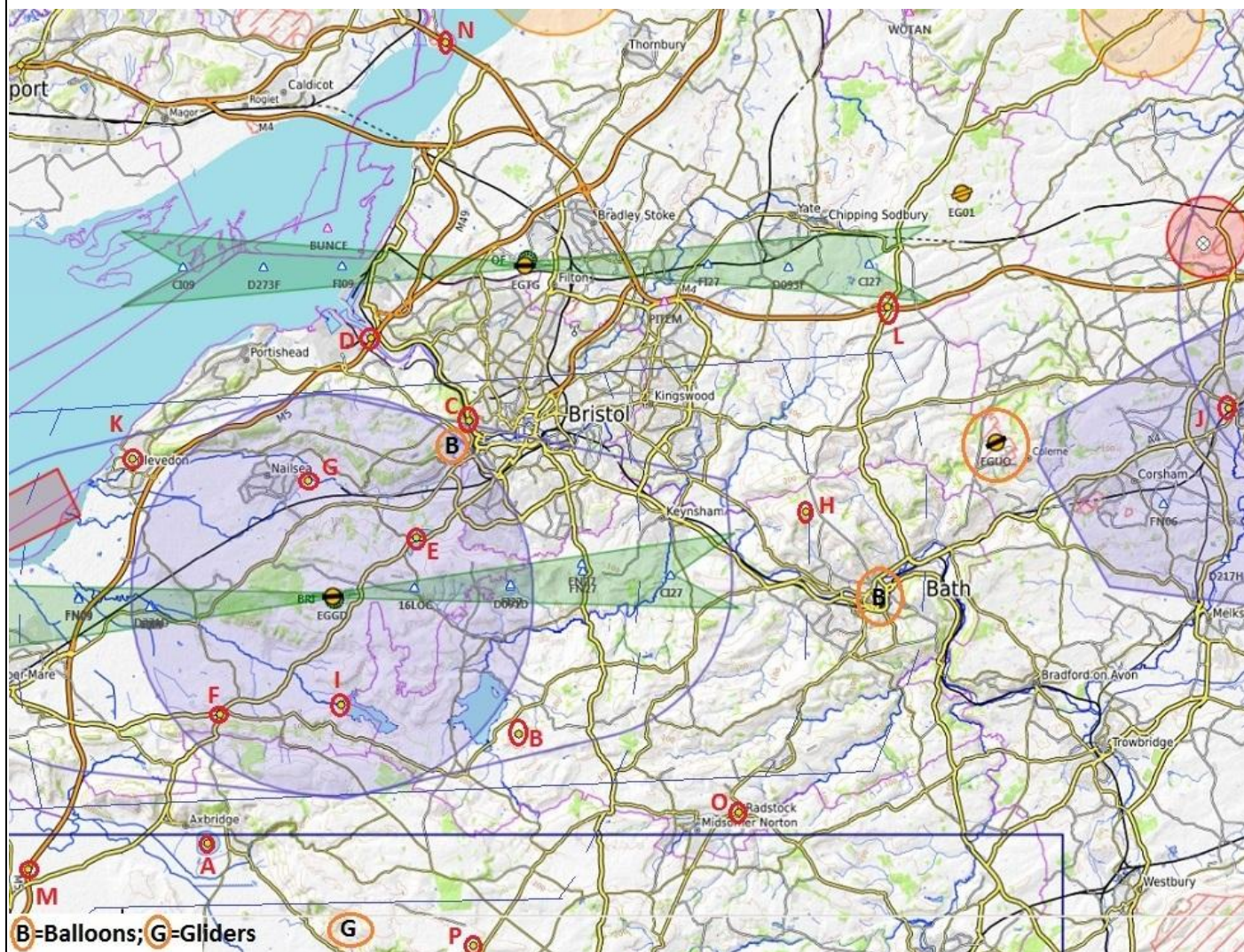


| | | | | | |
|-----------------------|---|---------------------------|---|---|-------------|
| AIRFIELD NAME | November 23 | BRISTOL | | EGGD | West |
| CALLSIGN (A/C RADIO) | Bristol Tower | | | 133.850 | |
| CALLSIGN (ES/VATSIM) | EGDD_TWR | | | App radar 125.650MHz. | |
| LOCATION | Lat N051.22.58.000 | Long W002.43.09.000 | | Elev. 622ft | |
| LOCATION GEOGRAPHIC | 7nm SW of Bristol | | | Conspicuity ---- | |
| CHART SOURCE/VOR | NATS | Bristol Director. 136.080 | Ground/del 121.930MHz | QFE= QNH -20HPscls | |
| METAR AIRPORT | EGGD 126.030MHz | NO NORDO A/C | LIMITED GA FACILITIES - PPR ETA and Length of stay | | |
| NAV AIDS | NDB BRI 414KHz | ILS 110.15MHz | Most grass areas are unsuitable for parking of aircraft. | | |
| RUNWAYS | Headings | Dimension | Surface | GA Monitoring, on 125.650, Squawk. 5077 | |
| | 09 / 27 | 2011m x 45m | Grooved Asphalt | NO NORDO AIRCRAFT | |
| AIRSPACE | CLASS G | Transition level 6000ft | Airspace above Class A. Base Alt 19500 London FIR/Cotswold CTA | | |
| CIRCUITS | 1000ftQFE; Jets 1500ftQFE | | NORMALLY South; 09 RH. 27 LH. May be varied by ATC. | | |
| NO FLY | FELTON village and general area beyond northern A/D boundary | | | | |
| LOCAL HAZARDS | <p>MOST Grass areas unsuitable for A/C Parking. Bird activity, especially racing pigeons. Hot air balloon launching Ashton Court, 3nm NE of A/F. - up to 1000ft in controlled Airspace. Gliding and hang gliding within CTA/CTR max QFE shown; Ubley (CTR) 3.5nm SSE up to 2500ft. Halesland, 7nm SSW. EAST of Cheddar reservoir up to 5000ft. Bath Gap, 13nm East up to 4500ft. UAVs may operate up to 600ft QFE 4.5nm NE, SE of Long Ashton.</p> | | | | |
| SPECIAL RULES | Pilots should request departure clearance before start/movement. AT ALL TIMES minimise A/C noise. 27 Landings , vacate, STOP and report at GX hold point for taxi. | | | | |
| REMARKS | Cross-link Grass taxiway is now ASPHALT. Expect departure from the CTA NOT ABOVE 2000ft QNH If you want to depart from the H/D intersection, REQUEST IT on startup. | | | | |
| HELICOPTER OPERATIONS | HELICOPTERS MUST ARRIVE / DEPART USING THE RUNWAY IN USE. Arrivals from North and East; follow A38, avoid Felton, 27 join right base, 09 expct right downwind join. Westerly departures, DO NOT commence turn until beyond A/D west boundary. Easterly departures, follow A38 AFTER crossing 27 threshold. OR FOLLOW ATC INSTRUCTIONS. Do NOT fly beyond the northern A/D boundary below 500ft QFE. DO NOT fly over ANY PART of the WEST or MAIN Aprons. Helicopter CIRCUIT height is 700ft QFE | | | | |





VFR VRPs (positioning) with nearest VOR; Radial and Range. A. to P. location on chart

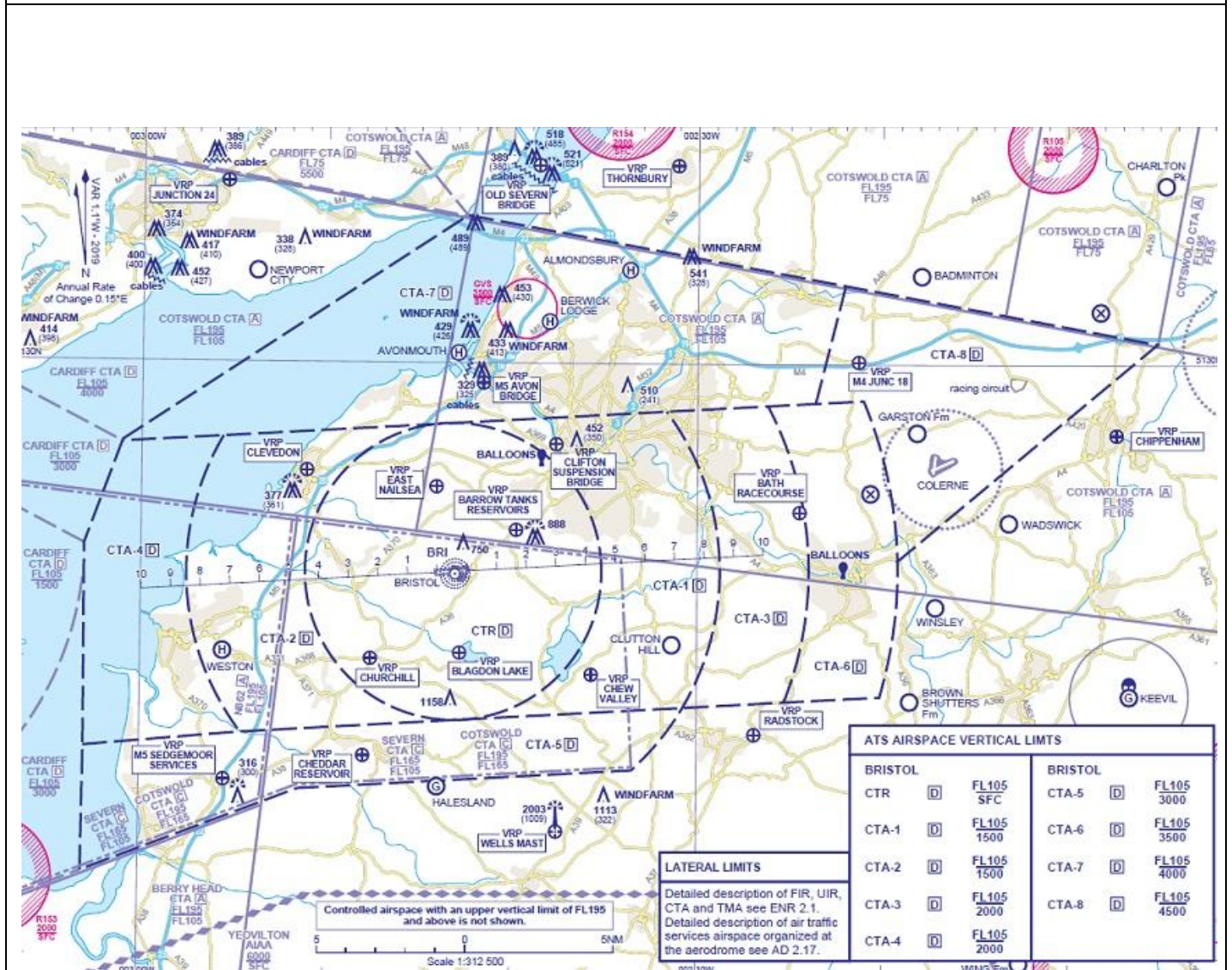
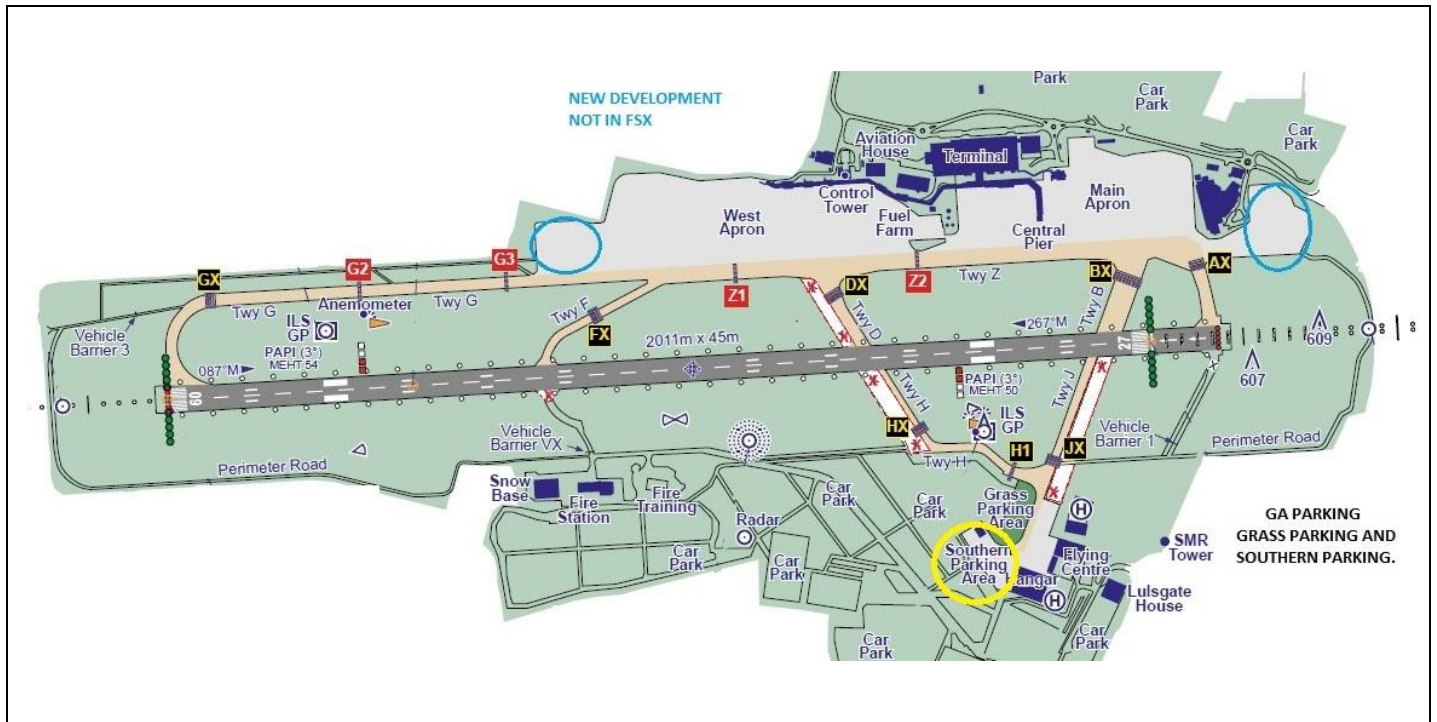
CTA ENTRY VRPs The entry points for VFR A/C NOT ABOVE A2000ft 1600ft QFE. May be used as a hold

- A. **Cheddar Reservoir** BCN 148°/32 NM
- B. **Chew Valley** BCN 134°/35 NM
- C. **Clifton Suspension Bridge** BCN 125°/28.8 NM
- D. **M5 Avon Bridge** BCN 124°/26 NM

CTR ENTRY, VFR HOLDS If not cleared to join the circuit or instructed, ENTER LEFT HAND HOLD/orbit.

- E. **Barrow Tanks Reservoirs** BCN 131° / 30 NM
- F. **Churchill** BCN 144°/29 NM
- G. **East Nailsea** BCN 133°/27 NM
- H. **Bath Racecourse** BCN 120°/37 NM
- I. **Blagdon Lake** BCN 139°/31 NM
- J. **Chippenham** CPT 268°/34 NM
- K. **Clevedon** BCN 139°/23 NM
- L. **M4 Junction 18** BCN 112°/37 NM
- M. **M5 Sedgemoor Services** BCN 156°/30 NM
- N. **Old Severn Bridge (M48)** BCN 107°/24 NM
- O. **Radstock** BCN 131°/40 NM
- P. **Wells (Mendip) Mast** BCN 141°/38 NM

Pilots, caution this VRP, height 1009 FT AGL, 2003 FT AMSL.



PILOTS: PLEASE PUT YOUR A/C CALLSIGN AFTER YOUR NAME. NOT TO BE USED FOR REAL WORLD OPERATIONS

