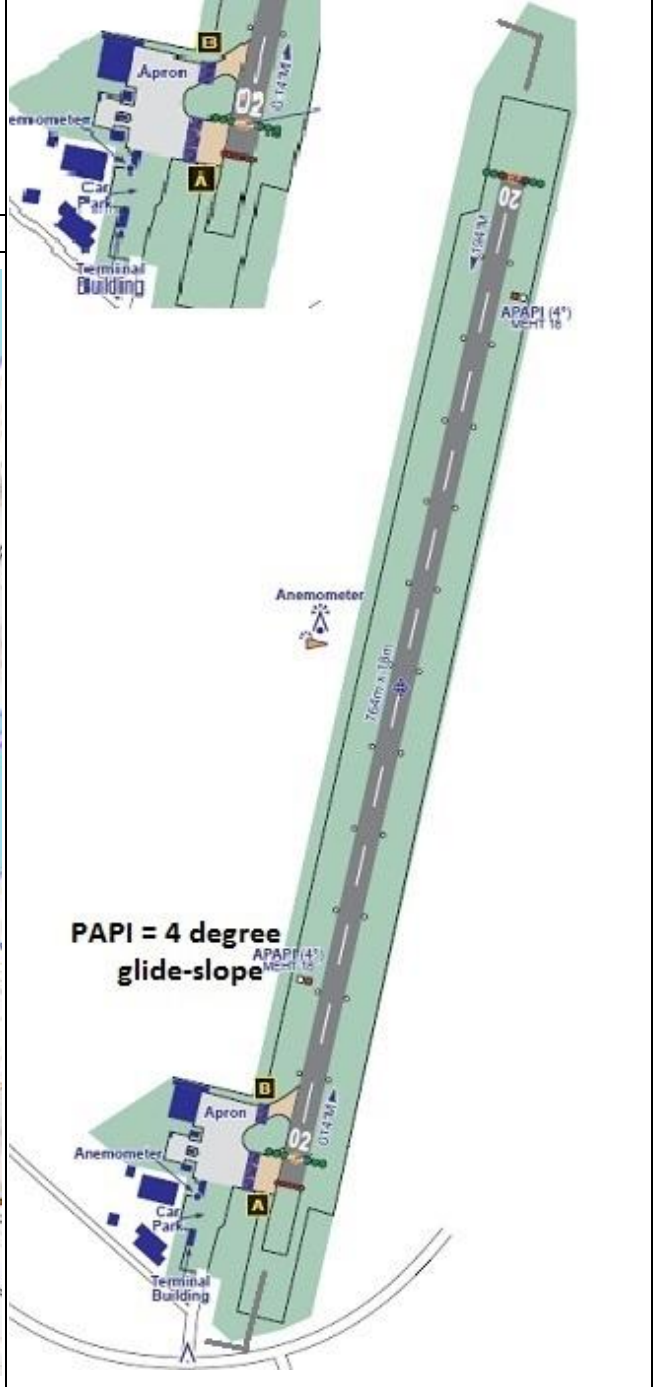


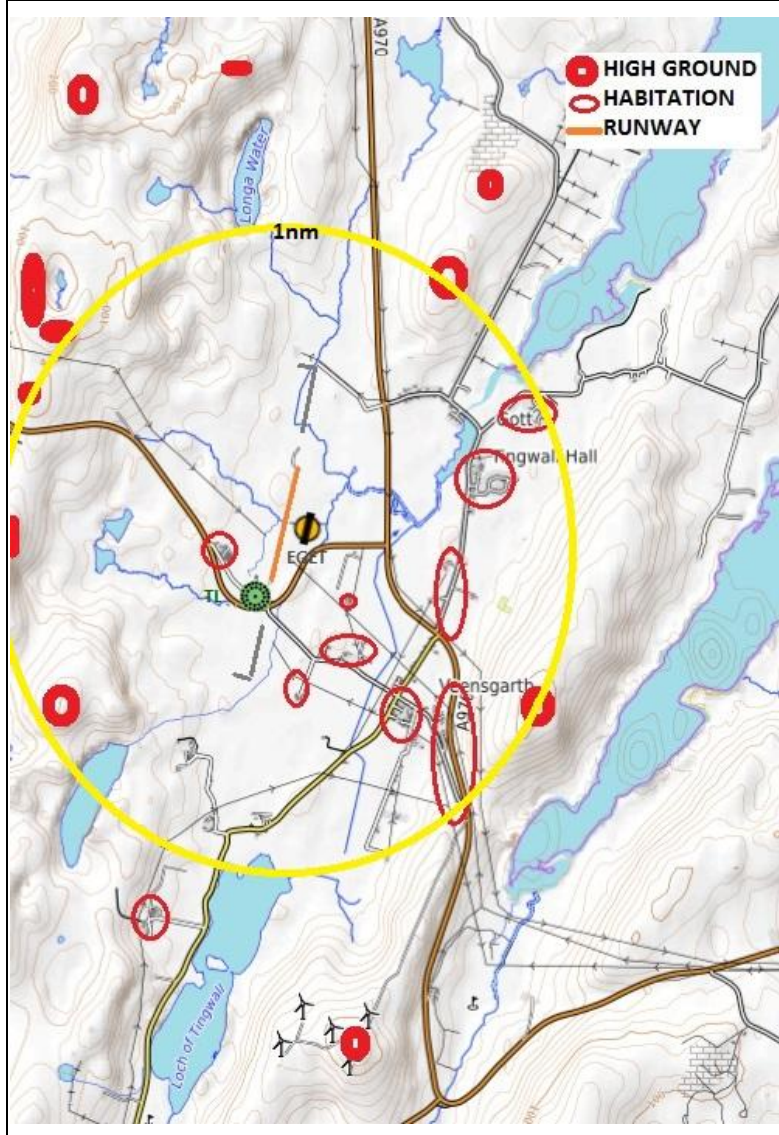
AIRFIELD NAME	November 23	<b>TINGWALL</b>		<b>EGET</b>	<b>Scotland</b>
CALLSIGN (A/C RADIO)	Tingwall Information			125.305	
CALLSIGN (ES/VATSIM)	EGET_I_TWR			APP Sumburgh 123.150	
LOCATION	N060.11.31.000	W001.14.37.000		Elev. 162ft	
LOCATION GEOGRAPHIC	4nm NW of Lerwick			Conspicuity	
CHART SOURCE/VOR	NATS	<b>GEESE, GULLS and other large species are a hazard</b>		QFE= QNH -5HPscs	
METAR AIRPORT	EGPB 125.855	<b>LOCAL HAZARDS: The A/F is surrounded by high ground, navigate with care, especially in poor weather, REMAIN VFR AT ALL TIMES.</b>			
NAV AIDS [NOT RW]	NDB, TL 376				
RUNWAYS	Headings	Dimension	Surface	<b>NO FLY AREAS: Any habitation, below circuit height, especially those highlighted on the chart below</b>	
	02 / 20	764M x 18M	Asphalt		
AIRSPACE	CLASS G	Transition level 6000ft		Airspace above Class C, Scottish FIR FL195	
CIRCUITS	1000ft QFE	CIRCUITS to NW. 02 LH, 20 RH: <b>CAUTION HIGH GROUND.</b>			

**SPECIAL RULES** START UP request, mandatory, if you must start engines to avoid drained batteries, ensure you report 'engine(s) started', at first contact.

**REMARKS** If the wind is 165<sup>0</sup>-170<sup>0</sup>, pilots may expect turbulence, towards the A/F from the wind turbines on Burradale Hill, 1.5nm E by S. When surface wind is 090 to runway heading, runway 20 is preferred due to better visibility from the AFISO control room.



**HELICOPTER OPERATIONS:** As Fixed Wing



**PILOTS: PLEASE PUT YOUR A/C CALLSIGN AFTER YOUR NAME.**  
**NOT TO BE USED FOR REAL WORLD OPERATIONS**