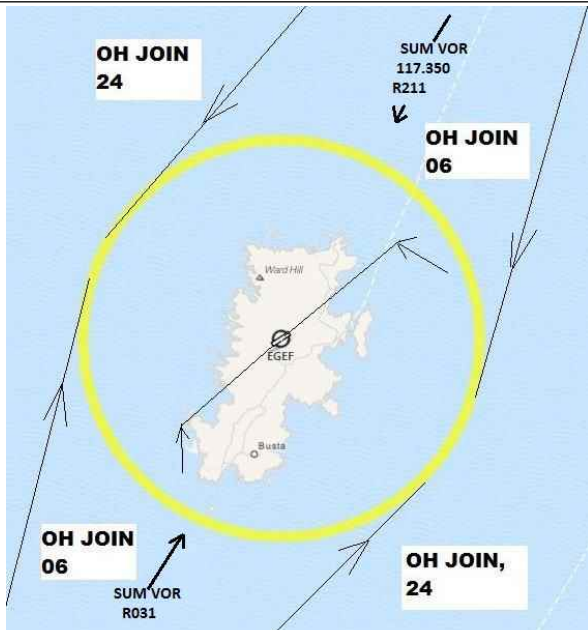
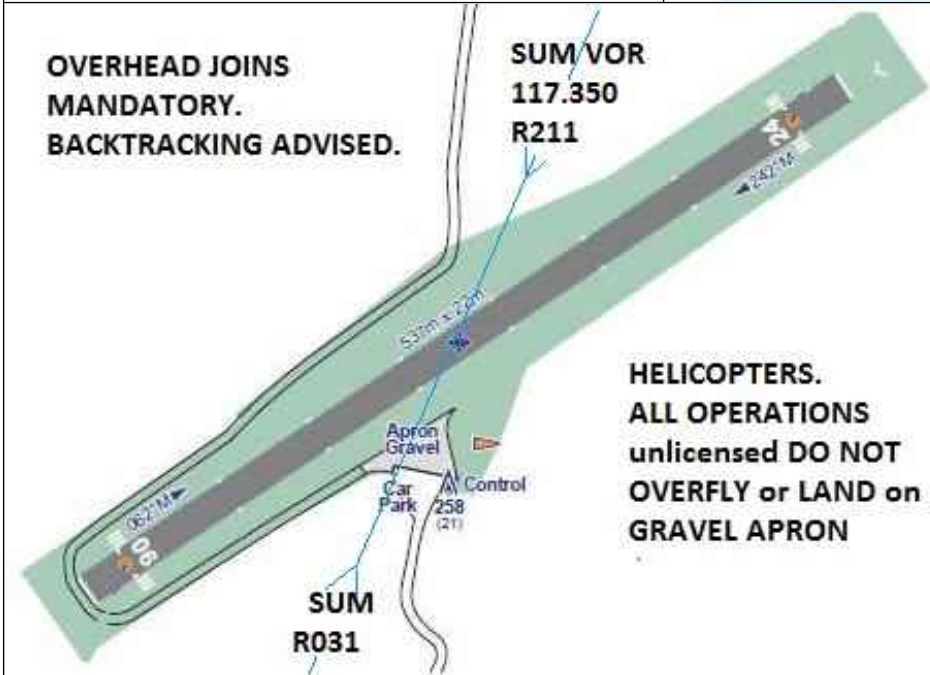
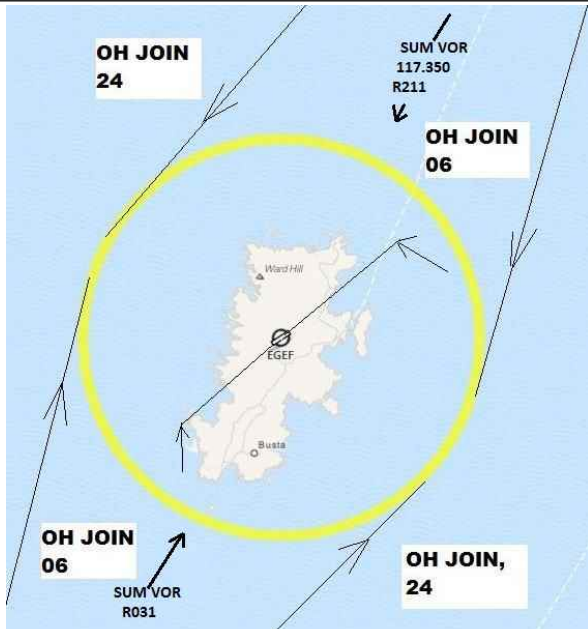


AIRFIELD NAME	January 25	FAIR ISLE		EGEF	Scotland
CALLSIGN (A/C RADIO)	Fair Isle Radio			118.030	
CALLSIGN (ES/VATSIM)	EGEF_R_TWR			Elev. 237 ft	
LOCATION	Lat N059.32.05.000	Long W001.37.43.000		Conspicuity ---	
LOCATION GEOGRAPHIC	On Fair Isle, Shetlands			QFE= QNH-8 HPscs	
CHART SOURCE	NATS	NO FLY AREAS		App.---	
METAR AIRPORT	EGPB 125.855	ALL Habitation below circuit height.			
NAV AIDS	NONE	SERIOUS BIRD HAZARD, whole island, especially nesting Terns in Summer on cliffs			
RUNWAYS	Headings	Dimension	Surface		
	06 / 24	537m x 22m	Gravel		
AIRSPACE	CLASS	Transition level 3000ft	Airspace above is Class		
CIRCUITS	1000ft QFE	All Circuits to the SOUTH. 06 RH. 24 LH. OHJs MANDATORY, see below			
LOCAL HAZARDS	Cliffs within 30m each end of runway can cause A/C to 'sink' on short final and land short (in the cliff) Runway surface prone to moss growth , may have patches of slippery surface , especially when wet.				
SPECIAL RULES	Backtracking of runway is advised due unreliable nature of ALL Grass areas. OH joins @ 2000QFE AT ALL TIMES , due possibility of sheep on A/F and/or runway				
REMARKS	SUMBERG VOR (SUM) is 23nm on R211^o - R031^o. A slow approach is advised, westerly winds will create turbulence on final. All A/C take maximum care. The runway surface may be loose and will be abrasive to A/C Tyres.		 <p>The map shows Fair Isle with a yellow circle around the runway area. Four 'OH JOIN' points are marked: 'OH JOIN 24' at the top left, 'OH JOIN 06' at the top right, 'OH JOIN 06' at the bottom left, and 'OH JOIN, 24' at the bottom right. VOR stations are labeled: 'SUM VOR 117.350 R211' at the top and 'SUM VOR R031' at the bottom. Other landmarks include 'Ward Hill', 'EGEF', and 'Busta'.</p>		
HELICOPTER OPERATIONS	No helicopter AREA OR SUPPORT. (car park may be available). As Fixed wing. hold 2nm @circuit ht REMAIN CLEAR OF ALL GRAVEL SURFACES. Grass areas prone to water logging.				
ALL PILOTS: PLEASE PUT YOUR A/C CALLSIGN AFTER YOUR NAME. NOT TO BE USED FOR REAL WORLD OPERATIONS					



OVERHEAD JOINS MANDATORY. BACKTRACKING ADVISED.

HELICOPTERS. ALL OPERATIONS unlicensed DO NOT OVERFLY or LAND on GRAVEL APRON