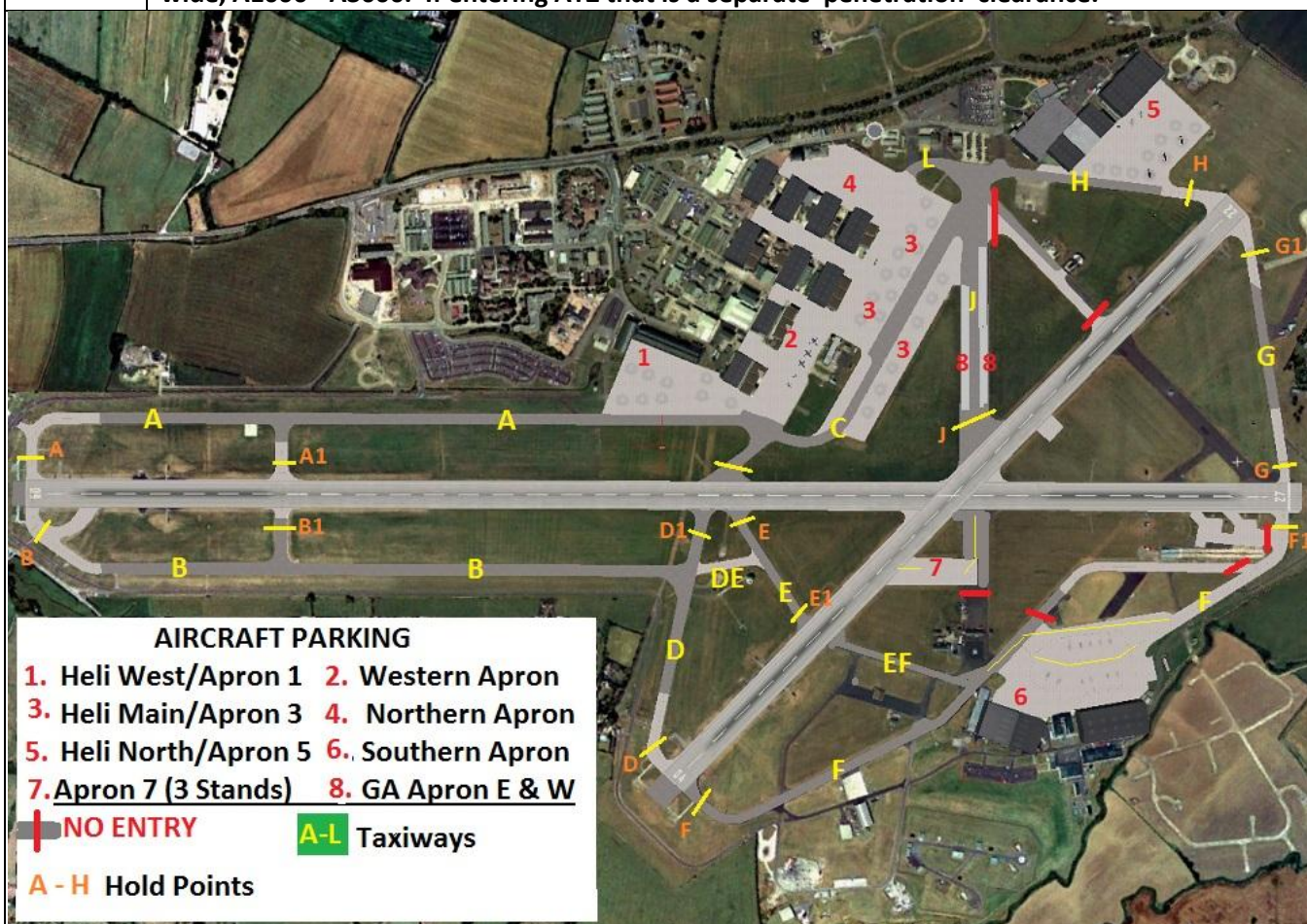
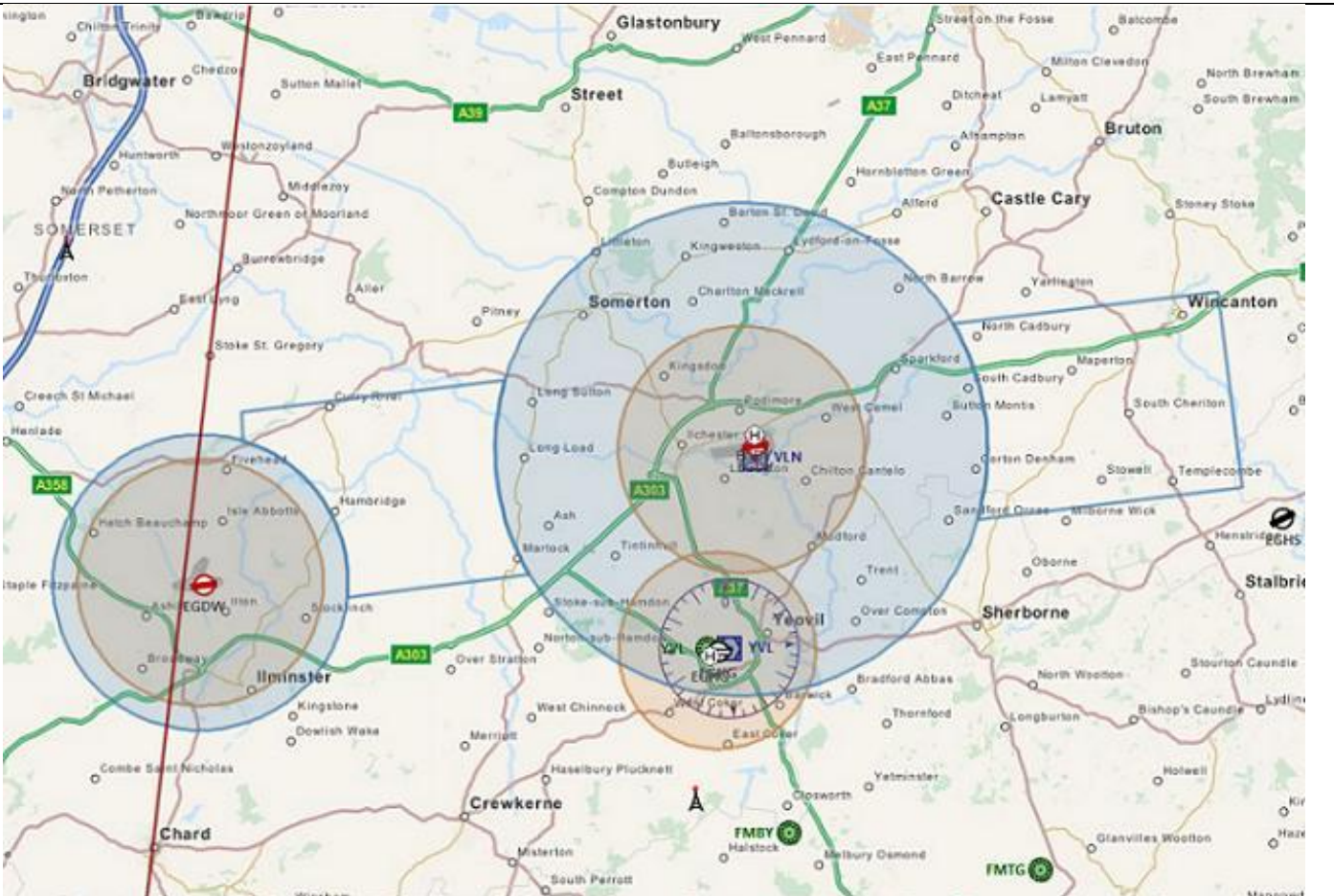


AIRFIELD NAME AND ICAO		December 19	RNAS YEOVILTON		EGDY	West
CALLSIGN (A/C RADIO)		Yeovil Tower			120.800	
CALLSIGN (ES/VATSIM)		EGDY_TWR			App./ radar 127.350	
LOCATION		Lat N051.00.50.000	Long w002.38.73.000		Elev. 75ft	
LOCATION GEOGRAPHIC		4nm N of Yeovil, 8nm W by S of Glastonbury			Conspicuity 0201-0257	
CHART SOURCE/VOR		FSX/PlanG	EGDY_P_TWR - App./ PAR- talk-down 123.300			
METAR AIRPORT		EGDY 120.870	QFE= QNH(METAR) -2 HPscls			
NAV AIDS (FSX / PLANG3)		NDB/YVL (@EGHG 4nm WbyS). - 343.000 kHz			DME/ VLN 111.000MHz	
RUNWAYS	Headings	Dimension	Surface	This is a very busy Military base with mixed Naval Air Traffic, which takes precedent AT ALL TIMES. Remember, you request MATZ penetration for zone entry.		
	09 / 27	2292M X 46M	Asphalt			
	04 / 22	1457m x 46m	Asphalt			
AIRSPACE	CLASS G/MOA		Transition level 3000 ft		Airspace above is MOA, CMATZ	
CIRCUITS HEIGHT / DIR.		1000ft QFE	VFR normally 04, 09 & 22 LH. 09 RH. OR AS ADVISED BY ATC.			
NO FLY AREA	Local villages below 1000ft QFE.					
LOCAL HAZARDS	Flocks of field birds. Military A/C, all types. MILITARY A/C have precedent and right of way in the air and on the ground.					
HELICOPTER OPERATIONS	SEE Airport plan for Helipads. Arrival and departure as instructed at all times. EGDY is home to a variety of Helios, from light training A/C to Heavy Lift (Merlins). Take care					
SPECIAL RULES	Arrivals/09/departures 27. Maintain centre-line EAST of the bypass, to pass BETWEEN the villages at 3nm. Circuits for VFR may vary, listen to ATC.					
REMARKS	This is a Military Air Base (RN). It lies within a CMATZ. When tower is on, you will be effectively under radar control. A Precision Approach Radar service MAY be available. For help with Military A/B operations for visiting VFR A/C, please see CIX Help notes 3. Military operations for VFR pilots. Remember MATZ dimensions: [EGDY] Circle, 5nm Radius, Sfc - A3000'; Stubs, Extend 5nm, along centre line of main runway 4nm wide, A1000 - A3000. If entering ATZ that is a separate 'penetration' clearance.					



There are no Taxiway Signs on FSX, Only Runway (hold) signs. The hold designators above will be used.
NOTE Changes in A/F layout. Taxi M & F (nth of apron 6) CLOSED; access to Apron 7 via Runway intersection.
Alert stands, runway 27 threshold. CLOSED. Taxiway EF re-instated, Helicopters and GA ONLY, Taxi J GA ONLY.



PILOTS: PLEASE PUT YOUR A/C CALLSIGN AFTER YOUR NAME. NOT TO BE USED FOR REAL WORLD OPERATIONS