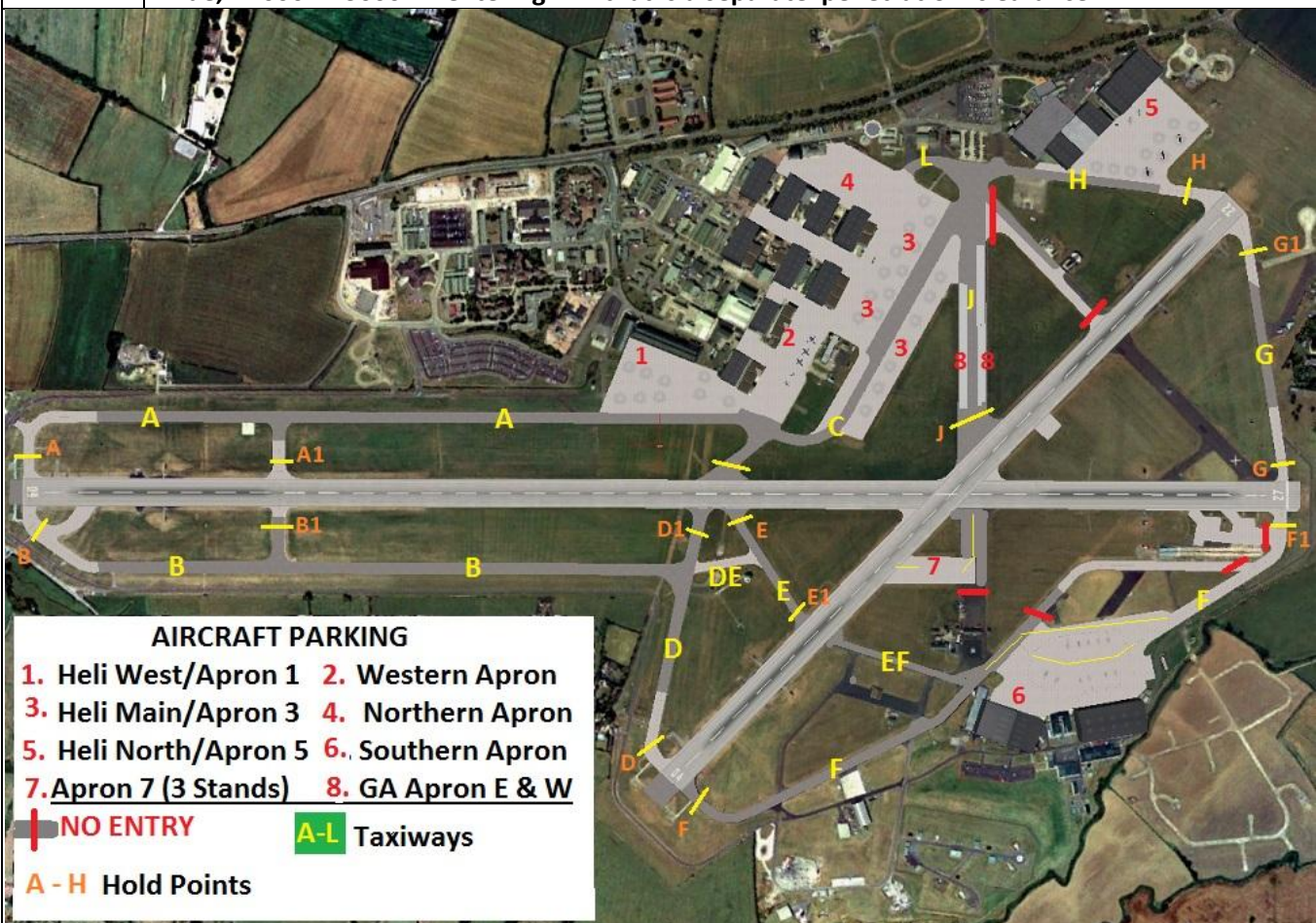


AIRFIELD NAME AND ICAO		September 24	<b>RNAS YEOVILTON</b>		<b>EGDY</b>	<b>West</b>
CALLSIGN (A/C RADIO)		Yeovil Tower			120.800	
CALLSIGN (ES/VATSIM)		EGDY_TWR			App./ radar 127.350	
LOCATION		Lat N051.00.50.000	Long w002.38.73.000		Elev. 75ft	
LOCATION GEOGRAPHIC		4nm N of Yeovil, 8nm W by S of Glastonbury			Conspicuity 0201-0257	
CHART SOURCE/VOR		FSX/PlanG	EGDY_P_TWR - App./ PAR- talk-down 123.300			
METAR AIRPORT		EGDY 120.870	QFE= QNH(METAR) -2 HPscIs		Gnd. 122.100	
NAV AIDS (FSX / PLANG3)		NDB/YVL (@EGHG 4nm WbyS). - 343.000 kHz			DME/ VLN 111.000MHz	
RUNWAYS	Headings	Dimension	Surface	This is a very busy Military base with mixed Naval Air Traffic, which takes precedent AT ALL TIMES. Remember, you request <b>MATZ penetration for zone entry.</b>		
	09 / 27	2292M X 46M	Asphalt			
	04 / 22	1457m x 46m	Asphalt			
AIRSPACE	CLASS G/MOA		Transition level 3000 ft		Airspace above is MOA, CMATZ	
CIRCUITS HEIGHT / DIR.		1000ft QFE	VFR normally 04, 09 & 22 LH. 09 RH. <b>OR AS ADVISED BY ATC.</b>			
NO FLY AREA	Local villages below 1000ft QFE.					
LOCAL HAZARDS	Flocks of field birds. Military A/C, all types. MILITARY A/C have precedent and right of way in the air and on the ground.					
HELICOPTER OPERATIONS	SEE Airport plan for Helipads. <b>Arrival and departure as instructed at all times.</b> EGDY is home to a variety of Helios, from light training A/C to Heavy Lift (Merlins). Take care					
SPECIAL RULES	<b>Arrivals/09/departures 27.</b> Maintain centre-line EAST of the bypass, to pass BETWEEN the villages at 3nm. Circuits for VFR may vary, listen to ATC.					
REMARKS	<b>This is a Military Air Base (RN).</b> It lies within a CMATZ. When tower is on, you will be effectively under radar control. A Precision Approach Radar service MAY be available. For help with Military A/B operations for visiting VFR A/C, please see CIX Help notes 3. Military operations for VFR pilots. Remember MATZ dimensions: [EGDY] Circle, 5nm Radius, Sfc - A3000'; Stubs, Extend 5nm, along centre line of main runway 4nm wide, A1000 - A3000. If entering ATZ that is a separate 'penetration' clearance.					

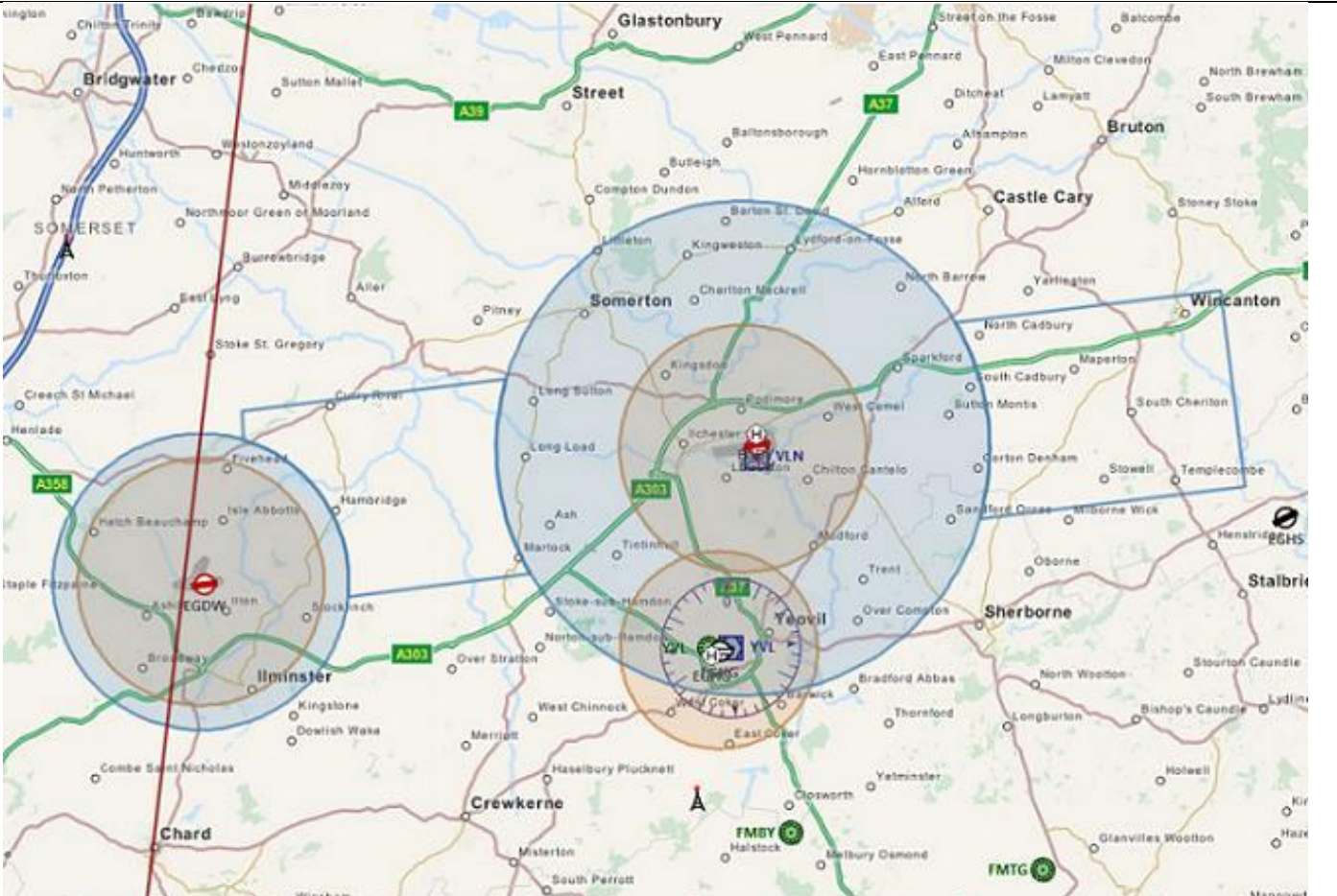


There are no Taxiway Signs on FSX, Only Runway (hold) signs. The hold designators above will be used.

NOTE Changes in A/F layout. Taxi M & F (nth of apron 6) CLOSED; access to Apron 7 via Runway intersection.

Alert stands, runway 27 threshold. CLOSED. Taxiway EF re-instated, Helicopters and GA ONLY, Taxi J GA ONLY.





**PILOTS: PLEASE PUT YOUR A/C CALLSIGN AFTER YOUR NAME. NOT TO BE USED FOR REAL WORLD OPERATIONS**