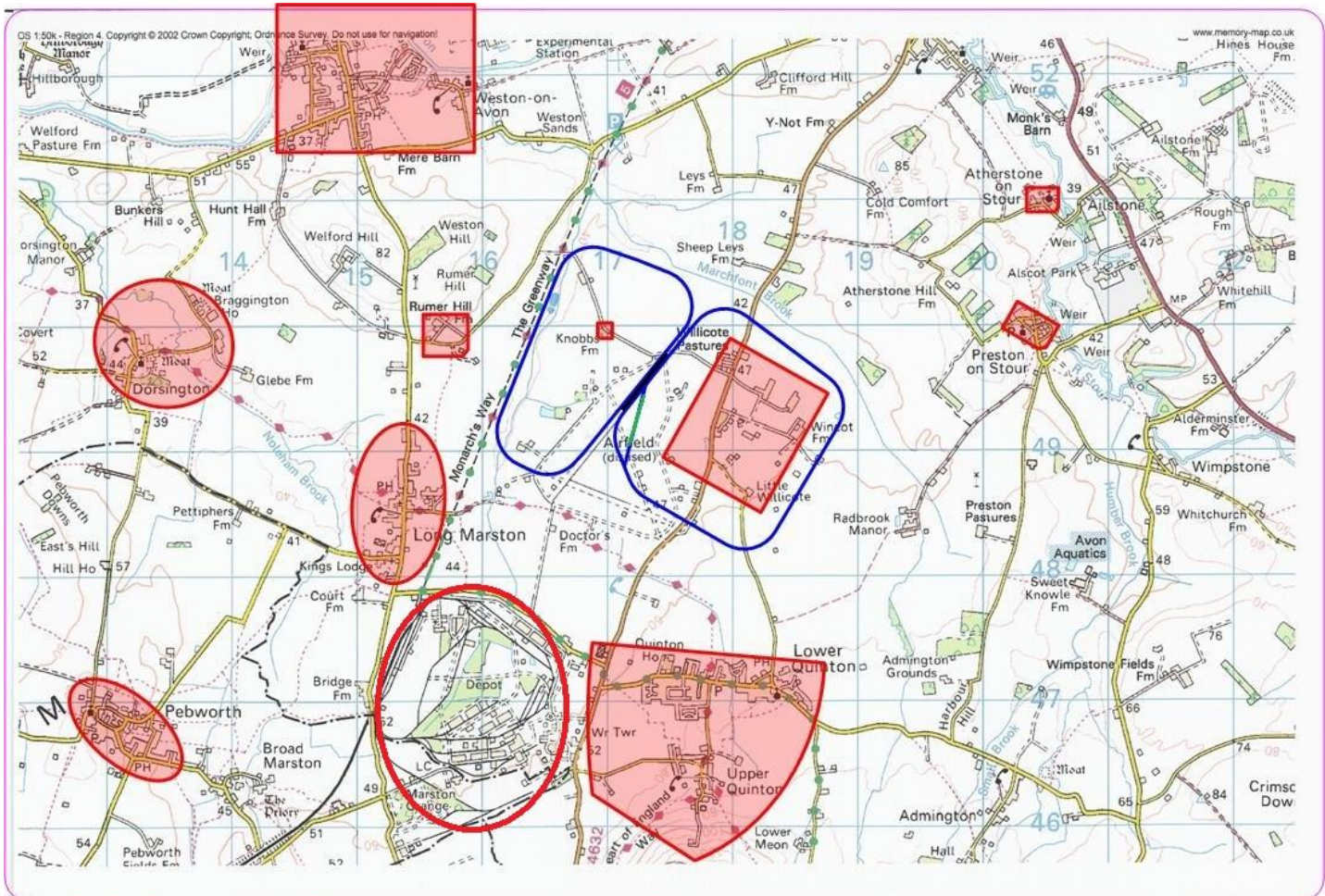
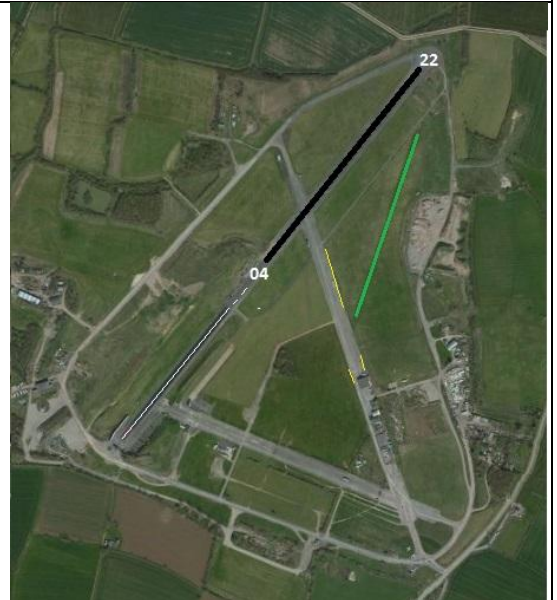


NAME AND ICAO	January 23	<b>LONG MARSTON</b>		<b>EGBL</b> FSX/PlanG EG2G	<b>Central</b>
CALLSIGN -RADIO	Long Marston Radio		129.82	<b>RW. THIS AIRFIELD NO LONGER EXISTS</b>	
CALLSIGN -VATSIM	EGBL_R_TWR			Elev. 141ft	
LOCATION	Lat N052.08.22.000	Long W001.45.07.000		QFE= QNH -5 Hpscls	
LOCATION GEO.	3nm SW of Stratford-on-Avon. 6nm SW of EGBW				
CHART SOURCE	Various	<b>RW This AF is MICROLIGHTS/Motor-glders ONLY; It is UNLICENCED.</b>			
METAR AIRPORT	EGBB 136.05	<b>The HARD Runway is now <b>unmaintained, unmarked and has a white 'X'</b>.</b>			
NAV AIDS (FSX / PLANG3)	none	<b>Half of the original runway is a RACEWAY. It is earmarked for HOUSING</b>			
RUNWAYS	Headings	Dimension	Surface		
	04 /22	794M (ish)	Unmaintained asphalt		
	01/19	About 600M x 20	Grass		
Noise Abatement	See chart below				
AIRSPACE	CLASS G Transition level 6000ft Airspace above is:- C FL195 London FIR				
CIRCUITS	1000ft QFE assume Left hand.				
NO FLY AREA	Long Marston and Lower Quinton Villages. Government Depot to south.				
HELICOPTERS	As for Fixed Wing. All operations at pilots own risk.				
SPECIAL RULES	<b>DO NOT cross areas indicated on chart below, below 1,500ft QFE; A1,650ft</b>				



**ALL PILOTS: PLEASE PUT YOUR A/C CALLSIGN AFTER YOUR NAME. NOT TO BE USED FOR RW OPERATIONS**