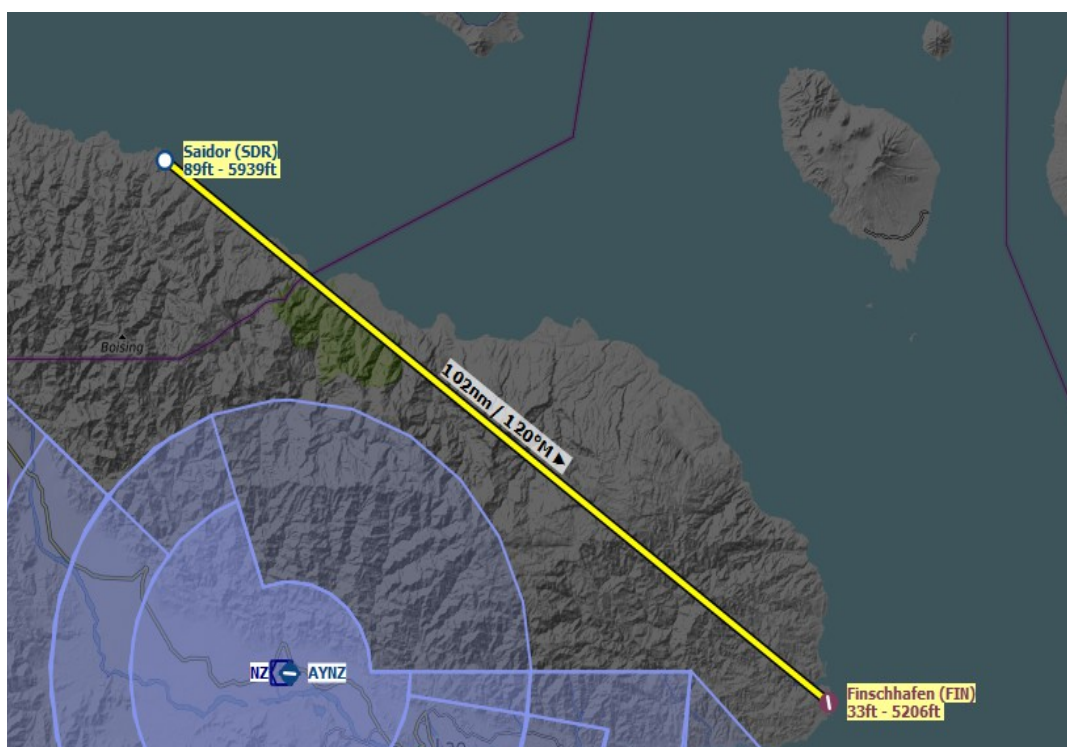


Christmas Caper – 2019

Day 12 – Saidor to Finschhafen



The Battle of Finschhafen was part of the Huon Peninsula campaign during World War II and was fought between Australian and Japanese forces. The fighting took place between 22 September and 24 October 1943 following the landing at Scarlet Beach, which was followed by a two-pronged advance on Finschhafen as the Australian 20th Infantry Brigade advanced on the town from the north, while the 22nd Infantry Battalion drove from the south, having advanced from the landing beaches east of Lae. After the capture of Finschhafen, the Japanese forces in the area withdrew towards Sattelberg where they sought to hold the Australians before launching a counteroffensive, which subsequently threatened the landing beach. This attack was repelled by American and Australian forces, with heavy casualties being inflicted on the Japanese. In the aftermath, the Australians went on the offensive, capturing Sattelberg, and then advancing towards the Wareo plateau.

The Route

Leg 1 Saidor to Finschhafen 102 nms

This days flying is 102 nms and if you follow the coast, can be comfortably undertaken in a Cessna 172. Admire the scenery on this leg.