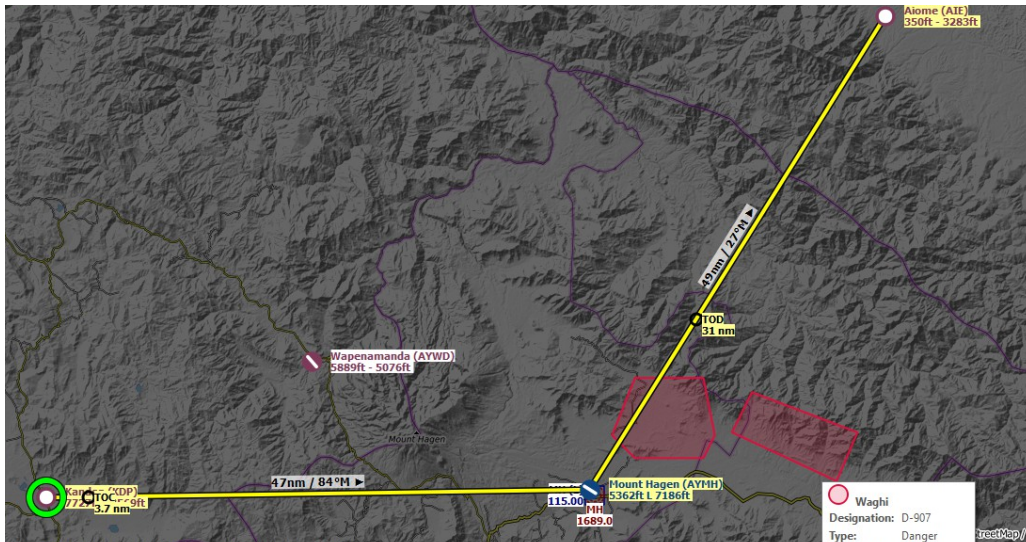


## Christmas Caper – 2019

### Day 10 - Kandep to Aiome via Mount Hagen



Kandep District is one of the five Districts of Enga Province, PNG. It is located in the southern part of Wabag, capital town of Enga. Kandep shares land borders between Laiagam-Porgergera district, Wagab, and Wapenimanda District. It also shares borders with Southern Highlands, Western Highlands and the newly breakaway Hela Province. Kandep is accessible by road, and the Kandep - Laiagam Road links to Wabag which is 3 hours drive back and forth. The Kandep - Mendi road is under construction. The Kandep - Magarima Road is also connected.

Kandep was formed due to volcanic eruption of Mt. Sugarloaf, and thus has many crater lakes; the largest being the Pakelem Lake of Lyumbi Island.

In 1933 Mick Leahy, brother Dan Leahy, and government officer Jim Taylor conducted an aerial reconnaissance of the highlands and discovered the huge and heavily populated Wahgi Valley. A short time later they walked in with a well supplied patrol and became the first westerners to come into contact with the tribes that are now in the location of Mount Hagen. The first patrol built an airstrip at Kelua, a short distance from modern Mount Hagen. From 1934, a new airstrip, the 'Mogei drome' or 'Mogai Aerodrome', was located on a site where the future town was formed. The first flight arrived here on 1 April 1934, piloted by Bob Gurney, with the first airmail leaving the next day. Later, this airstrip was to become the main street passing by China town and the airstrip (current) was moved 15 minutes out of town.

#### The Route

Leg 1	Kandep to Mount Hagen	47 nms
Leg 2	Mount Hagen to Aiome	49 nms

This day's flying is 96 nms and the main problem with the trip is the altitude. There are peaks in the region of 11 000 feet, so choose a suitable aircraft. Whatever steed you choose, you ought to be able to complete this trip in less than 1 hour 30 minutes.