

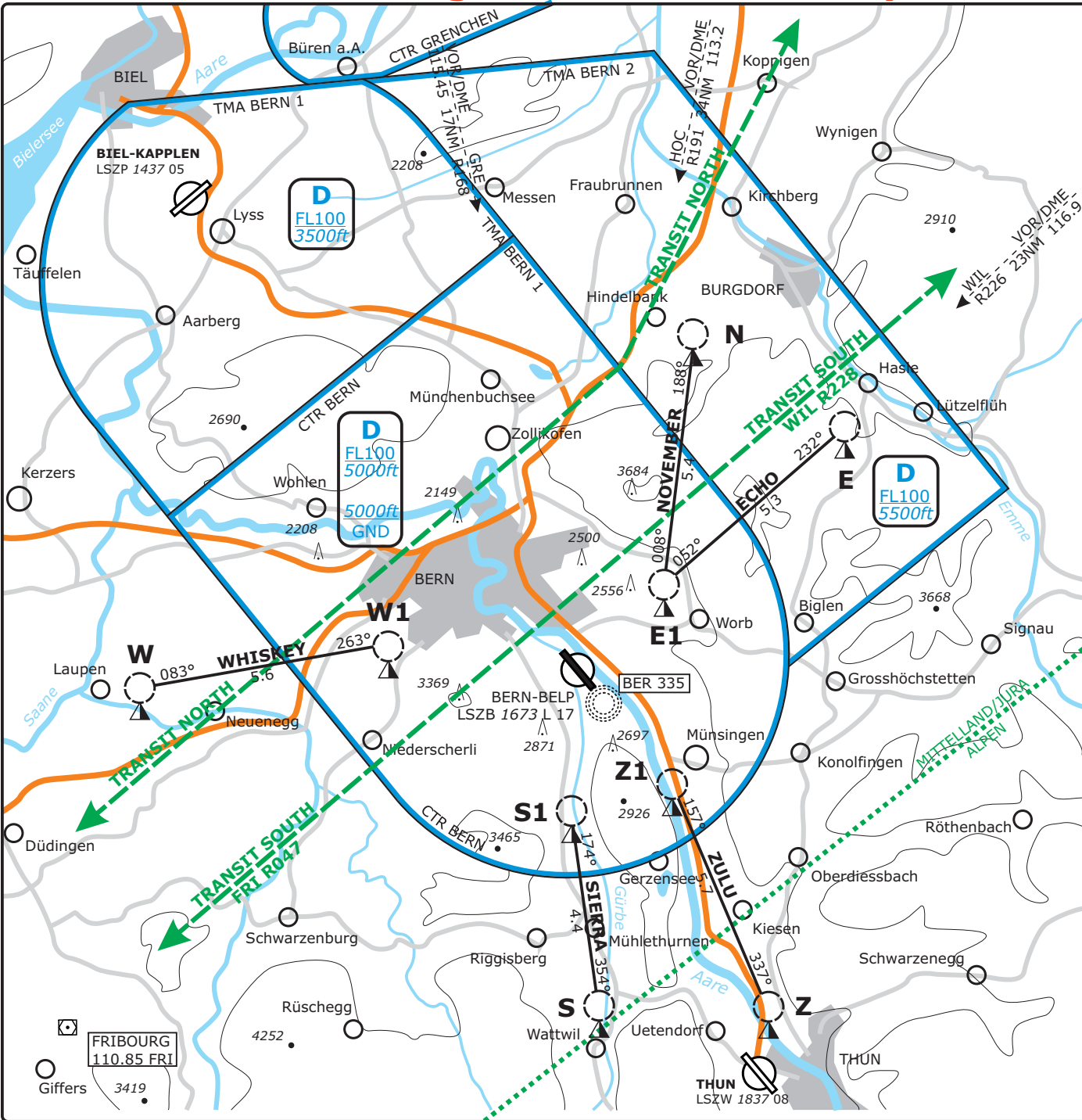
CHANGES: Rep Points, Airspace, Transit Routes, Nav aids

# Valid for flight simulation use only - do not use for real life navigation

© VACC Switzerland

http://www.vacc.ch/

charts@vacc.ch



ATIS BERN abhören (ATIS Kennung bestätigen)  
MNT BERN ATIS (confirm ATIS designator)

— VFR TRANSIT Routen  
— VFR TRANSIT Routes

Funkkontakt obligatorisch TWR < 5000 ft  
RDO contact compulsory APP > 5000 ft

Erster Funkkontakt 5 min vor Einflug in CTR  
First RDO contact 5 min prior CTR

Mit dem ersten Funkkontakt ist der vorgesehene  
Anflugweg zu melden (z.B. Route WHISKEY).

The intended routing (e.g. Route WHISKEY)  
shall be submitted with the first RDO contact.

⬆ Obligatoisch nur für Anflug  
Compulsory for ARR only

<b>N</b>	47° 02' 16" N / 007° 33' 39" E	<b>WIL R241 D16.5</b>
<b>E</b>	47° 00' 17" N / 007° 38' 51" E	<b>WIL R227 D15.0</b>
<b>E1</b>	46° 56' 45" N / 007° 32' 51" E	<b>WIL R228 D20.3</b>
<b>Z</b>	46° 46' 48" N / 007° 36' 12" E	<b>WIL R209 D26.9</b>
<b>Z1</b>	46° 52' 03" N / 007° 32' 52" E	<b>WIL R220 D23.8</b>
<b>S</b>	46° 46' 43" N / 007° 30' 38" E	<b>FRI R090 D11.9</b>
<b>S1</b>	46° 51' 23" N / 007° 29' 47" E	<b>FRI R069 D12.2</b>
<b>W</b>	46° 54' 16" N / 007° 15' 43" E	<b>FRI R014 D7.8</b>
<b>W1</b>	46° 54' 59" N / 007° 23' 50" E	<b>FRI R042 D11.0</b>

Transition Level: by ATC

DISTANCES IN NM  
ALTITUDES IN FT

**LSZB/BRN**  
BERN, SWITZERLAND

VAC CHART NO.1  
Revision 20 AUG 15

**VAG**  
VFR AREA

SWISS Information LSAS, I_CTR 124.70	BERN ATIS LSZB, ATIS 125.12	BERN Tower LSZB, TWR 121.05	BERN Arrival LSZB, APP 127.32	SWISS Radar LSAS, CTR 128.05	Apt Elev <b>1673</b>
--	-----------------------------------	-----------------------------------	-------------------------------------	------------------------------------	-------------------------

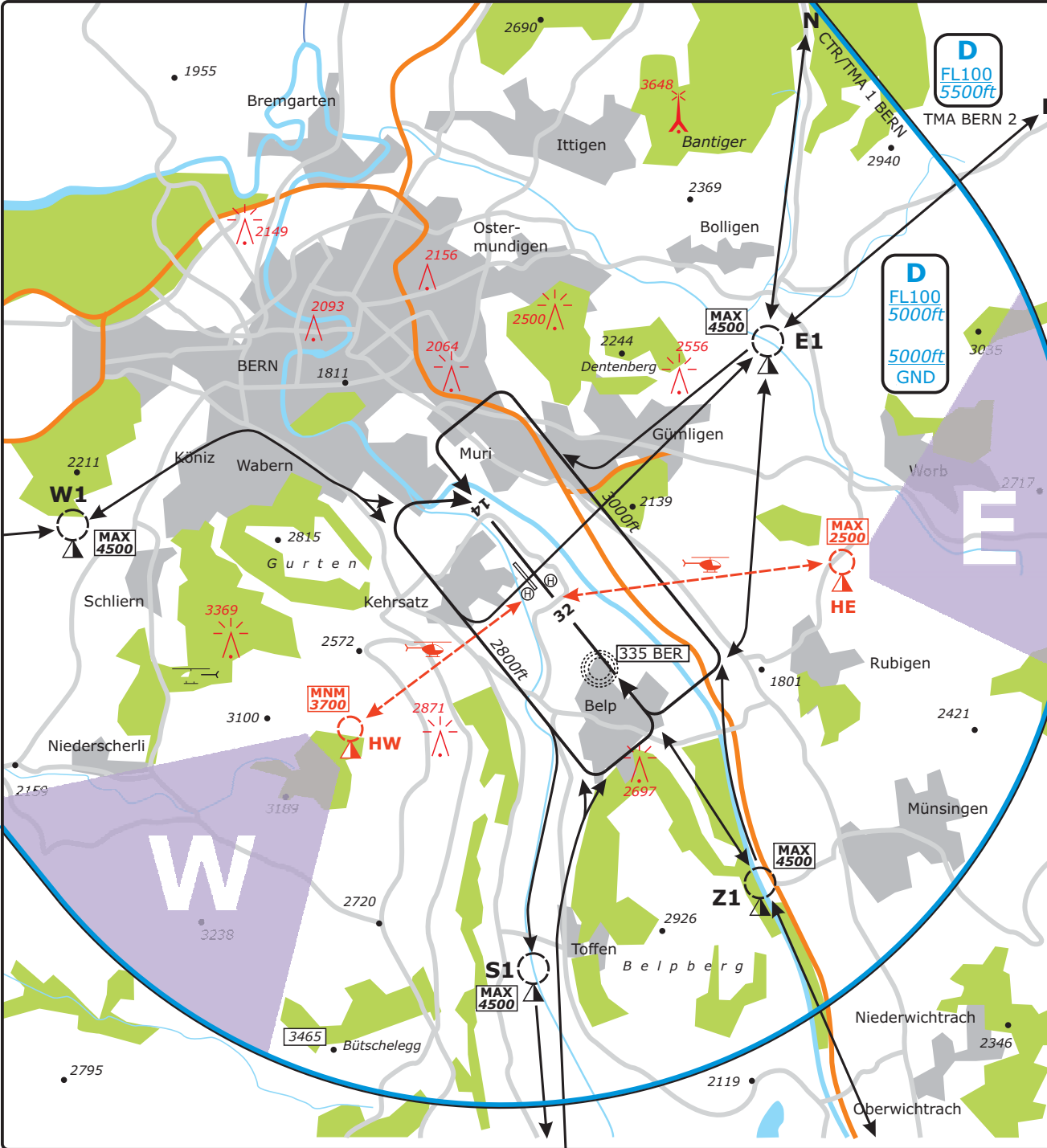
CHANGES: Airspace structure, Routings, Rep points

# Valid for flight simulation use only - do not use for real life navigation

© VACC Switzerland

http://www.vacc.ch/

charts@vacc.ch



ARR / DEP LSZB: TMA BERN 1 + 2 meiden  
avoid TMA BERN 1 + 2

MAX ALT innerhalb CTR: 4500ft  
MAX ALT within CTR: 4500ft

Beim Anfordern der Rollfreigabe muss der vorgesehene Flugweg (z.B. ready for taxi Route NOVEMBER) angegeben werden. Das Verlassen der CTR muss gemeldet werden (z.B. leaving CTR direction NOVEMBER).

When ready for taxi transmit outbound route (e.g. ready for taxi Route NOVEMBER). Report when leaving CTR (e.g. leaving CTR direction NOVEMBER).

Abflugrouten / Departure routes:

<b>RWY 14</b>	<b>RWY 32</b>
NOVEMBER: E1 - N	NOVEMBER: E1 - N (via overhead)
ECHO: E1 - E	ECHO: E1 - E (via overhead)
ZULU: Z1 - Z	
SIERRA: S1 - S	SIERRA: S1 - S
WHISKEY: W1 - W	WHISKEY: W1 - W

Mit dem ersten Funkkontakt ist der vorgesehene Anflugweg zu melden (z.B. Route WHISKEY).

The intended routing (e.g. Route WHISKEY) shall be submitted with the first RDO contact.

Anflugrouten / Arrival routes:

NOVEMBER: N - E1
ECHO: E - E1
ZULU: Z - Z1
SIERRA: S - ABM S1
WHISKEY: W - W1

Nur INBD obligatorisch  
Only INBD compulsory

**HE** 46° 54' 59" N / 007° 33' 57" E **WIL R223 D21.1**  
**HW** 46° 53' 23" N / 007° 27' 41" E **FRI R057 D11.8**

HEL Routen  
HEL routes

Transition Level: by ATC

DISTANCES IN NM  
ALTITUDES IN FT

**LSZB/BRN**  
BERN, SWITZERLAND

VAC CHART NO.2  
Revision 20 AUG 15

**VISUAL APPROACH**  
VAG

SWISS Information  
LSAS\_I\_CTR  
124.70

BERN ATIS  
LSZB\_ATIS  
125.12

BERN Tower  
LSZB\_TWR  
121.05

BERN Arrival  
LSZB\_APP  
127.32

SWISS Radar  
LSAS\_CTR  
128.05

Apt Elev  
**1673**