

QNH

QFE

WIND

/

AIRFIELD NAME AND ICAO		<b>CLACTON</b>		<b>EGSQ</b>
CALLSIGN (A/C RADIO)		Clacton Radio		135.400
CALLSIGN (ES/VATSIM)		EGSQ_R_TWR		Ground.
LOCATION		Lat N051.47.000	Long W001.07.000	Elev. 37ft
LOCATION GEOGRAPHIC		20nm NE of S.End A/P 1nm N of C/L. CLN VOR. 4nm R192		Conspicuity
CHART SOURCE		FSX/PlanG/reasearch		App.
METAR AIRPORT		EGMC or EGSS		QFE= QNH(METAR) -0 HPscs
NAV AIDS (FSX / PLANG3)		NDB/	kHz	DME/ MHz
RUNWAYS	Headings		Dimension	Surface & notes
	18 / 36		610m x 18m	Grass
AIRSPACE/TRANS ALT	CLASS G	Transition level 5500ft	Airspace above is Class A 5500ft Base Alt TMA	
CIRCUITS. Height / Direction.		1000'	ALL Circuits WEST. <b>18 RH. 36 LH - SEE SPECIAL RULES below.</b>	
NO FLY AREAS	Clacton Town and Jaywick. <b>See special rules for 18 approaches above</b>			
LOCAL HAZARDS	Sea Birds, along and off the caoast, also birds over the Golf course			
HEIO OPS.	ONLY LIGHT HELICOPTERS PERMITTED. DO NOT OVERFLY ANY PROPERTIES BELOW 2000'			
SPECIAL RULES	<b>Runway 18. MIN headwind to LAND, 10kts; remain 1000' over houses, full glide app</b> <b>Runway 36 min T/O headwind 10kts. Immediate LEFT (THROUGH THE GAP) to avoid houses.</b>			



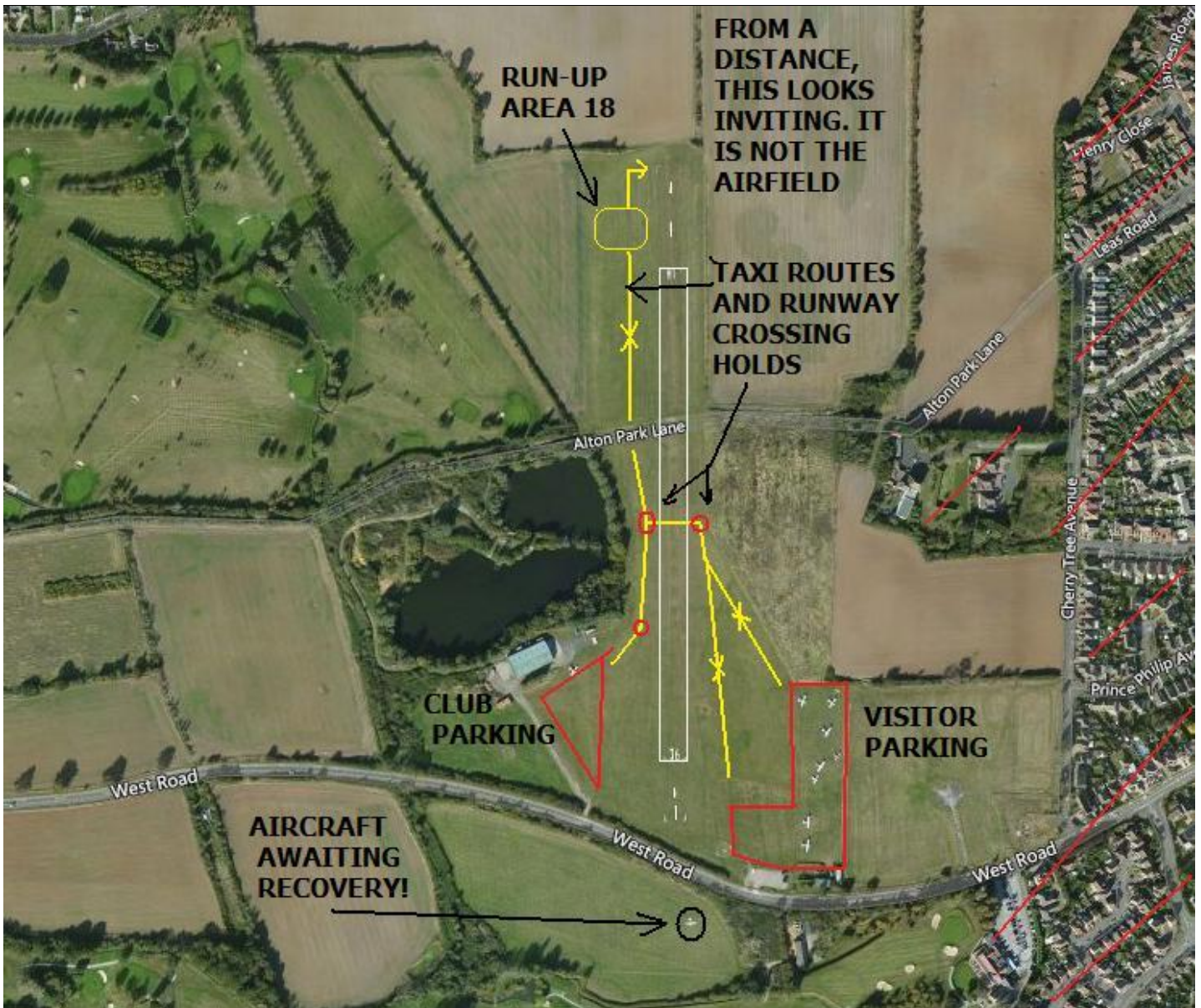
NOTE. **The inviting looking rectangle N EAST of the runway IS NOT THE AIRFIELD or the RUNWAY.**  
 You tube video, T&G & Landing, 18 (watch and weep). <https://www.youtube.com/watch?v=kgqfAmOJKhk>  
**WHEN RECEIVING A SERVICE VIA CIX TEAMSPEAK PLEASE PUT YOUR A/C CALLSIGN AFTER YOUR NAME.**

QNH

QFE

WIND

/



This is a very tricky A/F to land/depart to/from. Take great care. If in doubt **GO AROUND**. See SPECIAL RULES.

**Do not be another expensive casualty!**

Yes, I know it is vatsim and not real world. But this airfield WILL challenge your airmanship skills. Rise to the challenge, **keep to the rules (repeated here, in case you missed them)**  
I would also advise a look at the video.

If you can make a 18 landing or a 36 TO correctly, first time, pat yourself on the back.

### **BUT NOTE SPECIAL RULES**

**Runway 18. MINIMUM headwind to LAND, 10kts; remain 1000' over houses, full glide approach.**

**Runway 36. MINIMUM T/O headwind 10kts. Immediate LEFT to avoid houses.**

**OTHERWISE LAND FROM (36) or DEPART TOWARDS (18) the SEA.**

**ONLY LIGHT HELICOPTERS PERMITTED (noise). DO NOT OVERFLY ANY PROPERTIES BELOW 2000'  
OBSERVE TAXIWAY ROUTES AND HOLDS AT ALL TIMES, REPORTING POSITION/INTENTIONS**