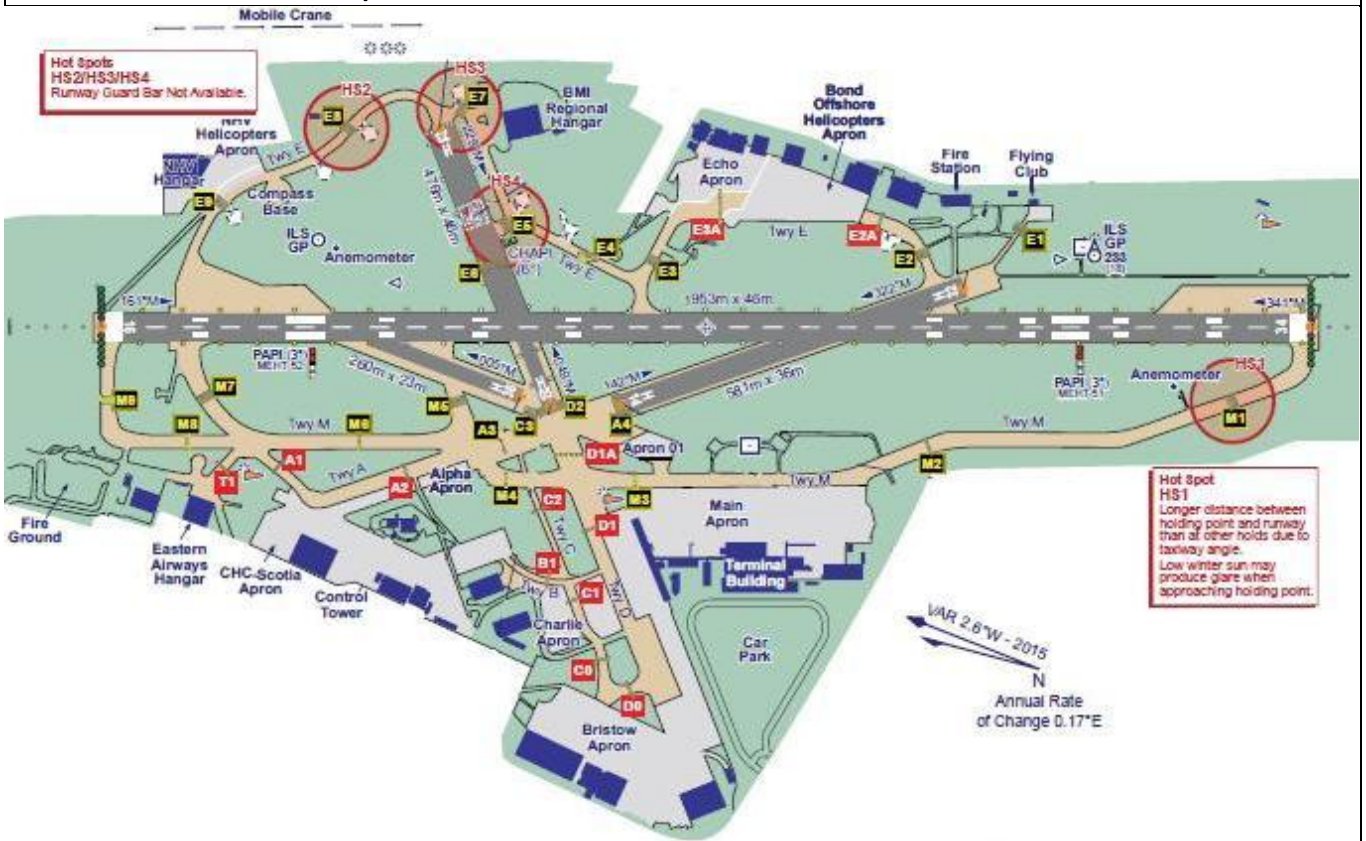


QNH**QFE****WIND****/**

AIRFIELD NAME AND ICAO	ABERDEEN / DYCE		EGPD
CALLSIGN (A/C RADIO)	Aberdeen Tower		118.100
CALLSIGN (ES/VATSIM)	EGPD_TWR		Ground. 121.700
LOCATION	Lat N057.12.09.000	Long W002.11.53.000	Elev. 215 ft
LOCATION GEOGRAPHIC	5nm NW of Aberdeen		Conspicuity ---
CHART SOURCE	NATS		App.---
METAR AIRPORT	EGPD 121.850		QFE= QNH(METAR) - HPscIs
NAV AIDS (FSX / PLANG3)	NDBs/ ATF 348.0kHz OM Rnwy34 GD 311 Girdle Ness/S harbour. NOT RW. AQ 336 Vicinity of GVS. NOT RW.		VOR ADN 114.300MHz. OM Rnwy16 ILS Rnwy 16 / 34 109.900 MHz
RUNWAYS	Headings	Dimension	Surface & notes
	16 / 34	1935m x 46m	Asphalt
	H05 / 23	476m x 46m	Asphalt. Helios only
	H14 / 23	581m x 36m	Asphalt. Helios only
AIRSPACE/TRANS ALT QNH	Transition ft	CLASS D Aberdeen CTR – top joins base of airways. FL115/195	
	CIRCUITS HEIGHT / DIR.	16/34 normally 1000'QFE, LH BUT MAY BE VARIED by ATC, DUE TO TRAFFIC.	
NO FLY AREAS	Aberdeen City, Except as instructed when using VFR lanes		
LOCAL HAZARDS	HELICOPTERS. SEA BIRDS		
HELICOPTER OPERATIONS	Light Helicopters expect to arrive / depart via VFR lanes. Landing s & Take-offs MAY be from one of the H Runways, as instructed by ATC.		
SPECIAL RULES	VFR A/C. 1. NO OVERHEAD JOINS , all flight as instructed by ATC. 2. VFR Arrivals and departures should expect to use the designated VFR lanes.		
REMARKS	Aberdeen is the MAJOR centre of operations for Helicopters to/from the Northern Oil Rigs. Most will be Sea-King size/wheeled. THEY HAVE RIGHT OF WAY, Air and Ground		
PILOTS: PLEASE PUT YOUR A/C CALLSIGN AFTER YOUR NAME.			



QNH

QFE

WIND

/

