

QNH

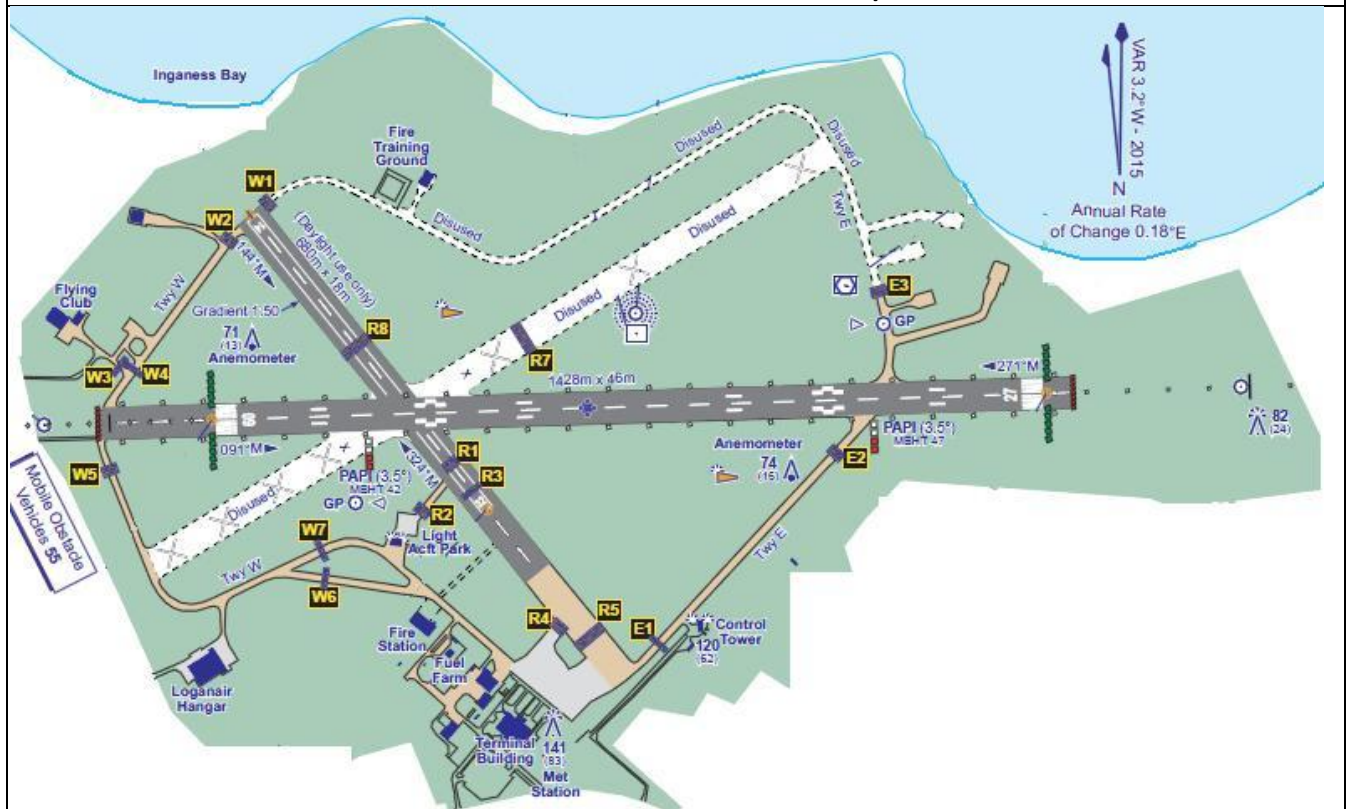
QFE

WIND

/

AIRFIELD NAME AND ICAO	<b>KIRKWALL</b>		<b>EGPA</b>	
CALLSIGN (A/C RADIO)	Kirkwall tower / Kirkwall information		118.300	
CALLSIGN (ES/VATSIM)	EGPA_TWR / EGPA_I_TWR		Ground. ---	
LOCATION	Lat N058.57.29.000	Long W002.54.02.000	Elev. 58ft	
LOCATION GEOG.	2.5nm SE of Kirkwall		Conspicuity	
CHART SOURCE	NATS		App.118.30	
METAR AIRPORT	EGPA 108.60		QFE= QNH(METAR) -0 HPscfs	
NAV AIDS (FSX / PLANG3)	NDB/ KW; 395kHz	VOR/ KWL; 108.60	ILS/ I-KIR/ORK	110.10MHz
RUNWAYS	Headings	Dimension	Surface & notes	
	09 / 27	1428m x 46m	Grooved Asphalt	
	14 / 32	680m x 18m	Asphalt; <b>DAYLIGHT USE ONLY</b>	
AIRSPACE/TRANS ALT QNH	CLASS G	Transition level 3000ft	Airspace above is Class C 19500 Base Alt Scottish FIR	
CIRCUITS HEIGHT / DIR.	1000ft QNH	LH or as advised / instructed		
NO FLY AREAS	Avoid overflying Kirkwall town.			
LOCAL HAZARDS	<b>Disused 07/25 runway and NE peri. track unsuitable for A/C</b> <b>Grass areas unsuitable for A/C due poor drainage/water-logging.</b> Runway 27 approach subject to turbulence and windshear in strong winds Sea birds are a hazard around the A/F.			
HELICOPTER OPERATIONS	Approaches / departures as fixed wing. Inbounds from S set down at Helipad, between R5 and E1. Departures from helipad as advised by ATC.			
SPECIAL RULES	UNLESS an ILS approach has been cleared by ATC, GA/VFR A/C are to approach via one of the VRPs below. VFR Arrivals, Overhead joins LH, or LH/RH downwind joins from VRPs AS ADVISED (Info) / Instructed (Twr) by ATC			
REMARKS	VRPs. 1. FOOT VRP; 5nm NNE. 2.LAMB HOLM ISLAND VRP. 4nm E by S. 3. STROMBERRY VRP. 4nm W by N			

**WHEN RECEIVING A SERVICE VIA CIX TEAMSPEAK PLEASE PUT YOUR A/C CALLSIGN AFTER YOUR NAME.**



**QNH**

**QFE**

**WIND**

**/**