

**QNH****QFE****WIND****/**

AIRFIELD NAME AND ICAO	<b>FARNBOROUGH</b>		<b>EGLF</b>
CALLSIGN (A/C RADIO)	Farnborough Tower		122.50
CALLSIGN (ES/VATSIM)	EGLF_TWR		Ground.
LOCATION	Lat N051.16.31.000	Long W000.46.39.000	Elev.238ft
LOCATION GEOGRAPHIC	1nm NNW of Aldershot		Conspicuity
CHART SOURCE	NATS		App.-----
METAR AIRPORT	EGLF 128.400		QFE= QNH(METAR) -8 HPscs
NAV AIDS (FSX / PLANG3)	NDB/ ----	kHz	ILS/I-FNB;I-FRG 111.550MHz
RUNWAYS	Headings	Dimension	Surface & notes
	06 / 34	2440m x 46m	Asphalt / Concrete. SEE LOCAL HAZARDS.
AIRSPACE/TRANS ALT QNH	CLASS G. Transition level 6000ft	Airspace above is Class A. Base Alt	
CIRCUITS HEIGHT / DIR.	1500ft QFE	All circuits to SOUTH. 06 RH. 24 LH. <b>SEE SPECIAL RULES.</b>	
NO FLY AREAS	Oakhanger HIRTA (High Intensity Radio Transmission Area). 8nm South, <b>NOFLY 3nm radius</b> NOTE Oakhanger is a Satellite Control Station. Emissions are dangerous to A/C within 3nm. <b>AVOID BUILT UP AREA 2nm WEST BELOW 1000ft QFE (1700ftQNH).</b> <b>NOT WITHIN 2.5nm OF LASHAM BELOW 500ftQNH.</b>		
LOCAL HAZARDS	Both runways have long starter extensions, <b>Liab</b> le to have arrester wires deployed at any time. <b>DO NOT USE FOR LANDING. Use with extreme caution AT ALL OTHER TIMES.</b> A/C inbound to runway 24, <b>NOT BELOW 3.5°</b> Glide Slope to avoid danger areas. Traffic inbound to Odiham, instrument approach to 27 will pass within 2.5nm South of A/F as low as 1500ft. Caution Birds, including Geese and Herons.		
HELICOPTER OPERATIONS	Taxiway Delta is available for Helicopters taxiing to DELTA ramp ONLY. VFR helicopter MUST follow EITHER FW Routes or Helicopter routes. <b>SEE HELICOPTER ROUTES BELOW.</b>		
SPECIAL RULES	EFATOs, 06 departures, <b>STRICTLY FORBIDDEN.</b> <b>ALL DEPARTURES.</b> <b>Runway 06.</b> Climb STRAIGHT AHEAD to 2dme BEFORE turning on course, or as instructed by ATC. <b>Runway 24. Northbound.</b> Climb STRAIGHT AHEAD to 2dme BEFORE turning on course. <b>Southbound.</b> Climb straight ahead to 1200ft QNH, turn LEFT to 220 <sup>0</sup> M to 2DME, or as required to avoid ODIHAM ATZ and Gliding areas, before turning on track. <b>ALL VFR ARIVALS – including CIRCUIT TRAFFIC. DO NOT join final BELOW 1000ft QFE.</b> <b>DO NOT DESCEND BELOW GLIDE PATH USING PAPIs OR ILS.</b>		
REMARKS	Disused taxiways South of runway & East of taxi W, are used for parking display A/C during <b>SBAC Air Show. Unsuitable for A/C at other times due probable FOD.</b> Arrival / Departure VRPs. Alton - N051.09.07 W000.57.58; Bagshot - N051.20.57 W000.41.57 Guilford – N051.14.22 W000.35.06; Hook – N051.16.46 W000.57.43 Nokia Factory – N051.17.33 W000.47.53  Farborough is surrounde by heavily built up areas, Military Danger areas and a number of minor airfield and gliding areas. ALL pilots should take extreme care and obtain and follow advice from Farborough LARS / Radar and/or Tower.		

**ALL PILOTS:****WHEN RECEIVING A SERVICE VIA CIX TEAMSPEAK PLEASE PUT YOUR A/C CALLSIGN AFTER YOUR NAME.**

QNH

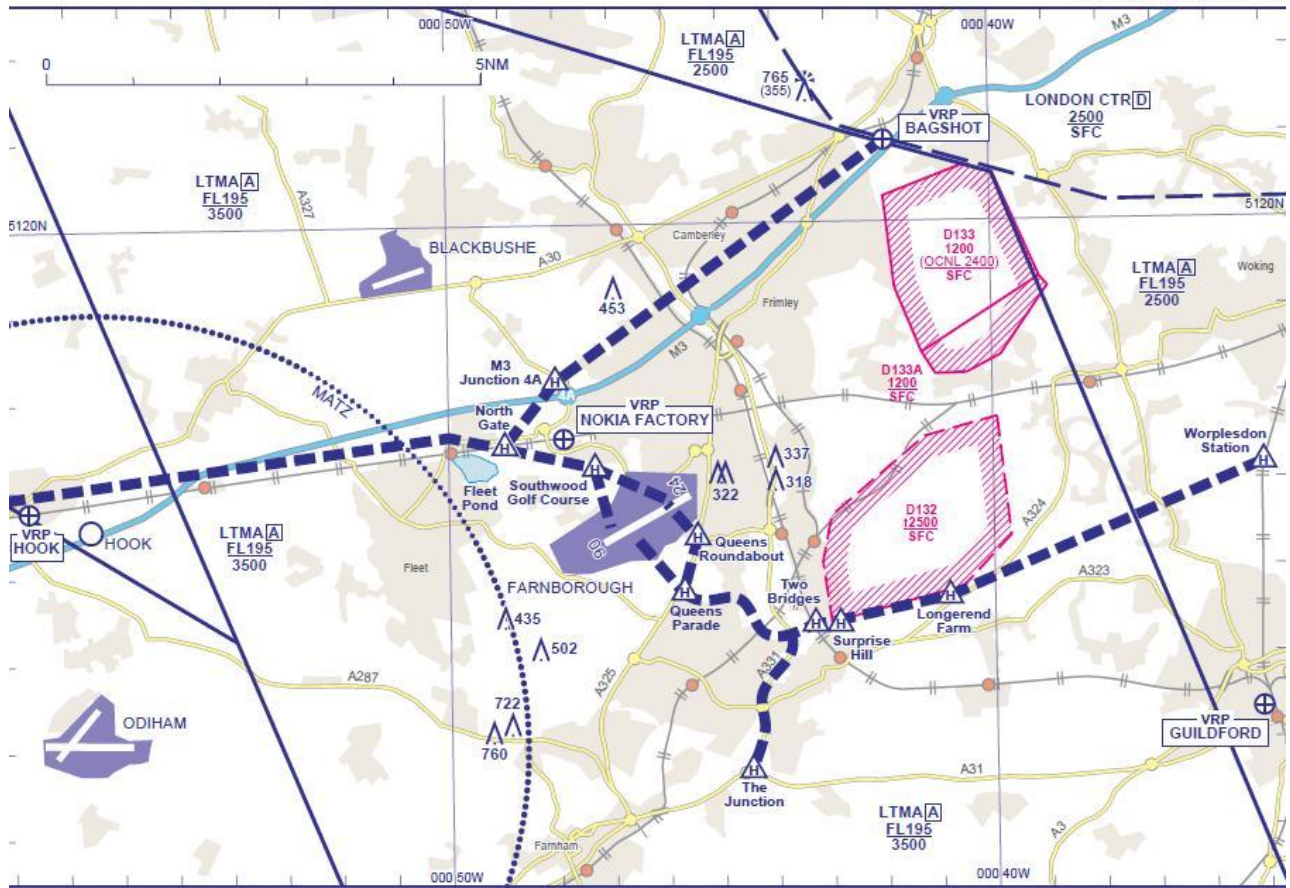
QFE

WIND

/

HELICOPTER VFR ARRIVAL/DEPARTURE ROUTES

FARNBOROUGH



DETAILED MAP OF FINAL/INITIAL STAGES

