

QNH

QFE

WIND

/

AIRFIELD NAME AND ICAO	CHALLOCK		EGKE	
CALLSIGN (A/C RADIO)	Challock Radio		---- TBA (when confirmed)	
CALLSIGN (ES/VATSIM)	EGKE_R_TWR		Ground. ----	
LOCATION	Lat N051.12.32.000	Long E000.49.85.000	Elev. 600ft	
LOCATION GEOGRAPHIC	Next to Challock village, Kent		Conspicuity ---	
CHART SOURCE	Various; KGC, CIX, FSX, PlanG.		App.---	
METAR AIRPORT	EGMD LYDD 129.225		QFE= QNH(METAR) -20 HPscIs	
NAV AIDS (FSX / PLANG3)	NDB/	kHz	DME/	MHz
RUNWAYS	Headings	Dimension	Surface & notes	
	02 / 20	572m x 40m	Grass	
AIRSPACE/TRANS ALT QNH	CLASS G	Transition level 6000ft	Airspace above is Class A Base Alt 5500 London TMA	
CIRCUITS HEIGHT / DIR.	1600ft QNH	ALL POWERED circuits to the South East. 02 RH; 20LH		
NO FLY AREAS	Local villages below 1600ft. QNH			
LOCAL HAZARDS	Challock is the home of the Kent Gliding Club and 618 Air Cadet Gliding School. INTENSE GLIDING ACTIVITY March to October. Winch launches and aerial tows to 2000 ft			
HELICOPTER OPERATIONS	PPR ONLY due danger to resident A/C. USE EXTREEM CARE. DO NOT CROSS A/F.			
SPECIAL RULES	DO NOT ENTER THE LONDON TMA.			
REMARKS	On FSX the Runway, 02/20 IS NOT MARKED , see picture below. There are NO NAVAIDS related to the A/F. It is NOT designated on PlanG , (find it and make an airstrip location). POWERED A/C MUST use runway 02/20 ONLY			

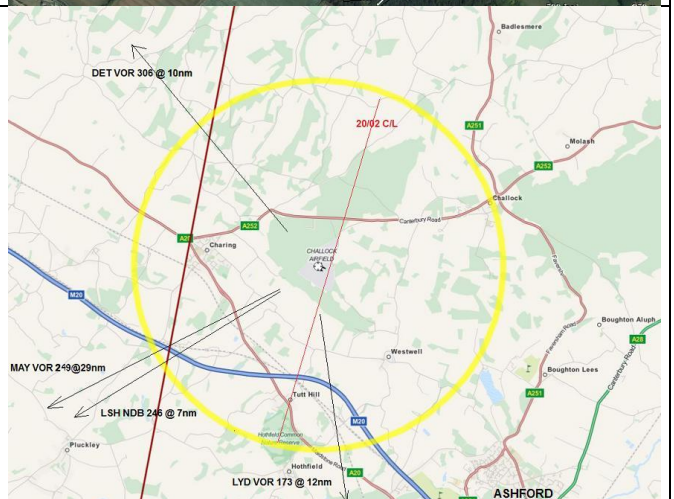
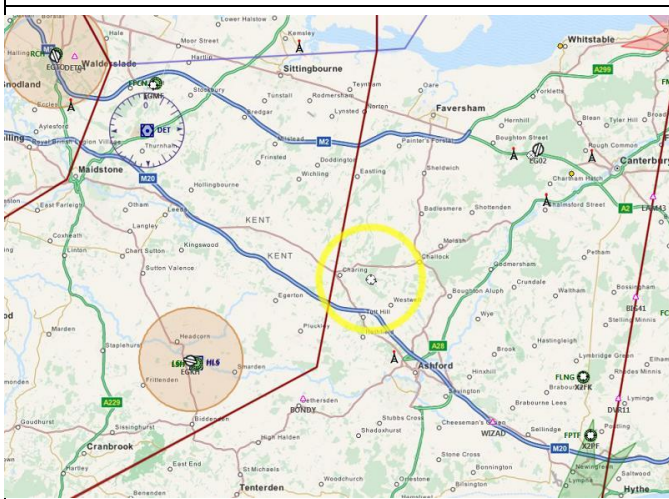
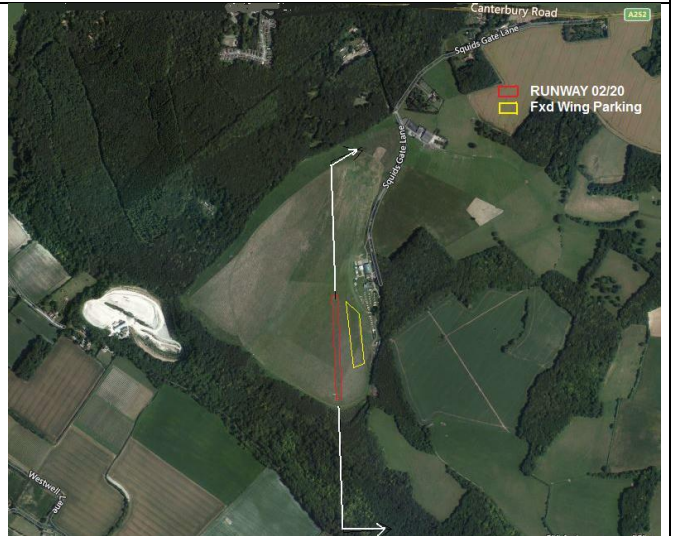
EGKE Challock Airport

Nearby Navigation Aids

ID	Name	Freq	Radial / Range
HLS	LASHENDEN/HEADCORN	115.95	066° 7.5
DET	DETLING	117.30	123° 10.5
LYD	LYDD	114.05	352° 12.6
LDY	LYDD	108.15	347° 15.5
LSH	LASHENDEN/HEADCORN	340	248° 7.5
RCH	ROCHESTER	369	309° 15.1
LZD	LYDD	397	168° 15.5
MTN	MANSTON	347	070° 21.0

Nearby Airports with Instrument Procedures

ID	Name	Heading / Distance
EGMD	Lydd Airport	168° 15.7
EGMC	Southend Airport	350° 22.4
EGKB	Biggin Hill Airport	287° 31.0
EGLC	London City Airport	305° 34.2
EGKK	London Gatwick Airport	268° 38.7
LFAC	Calais Dunkerque Airport	112° 44.9
EGSS	London Stansted Airport	334° 46.4
EGKA	Shoreham Airport	246° 48.2



QNH

QFE

WIND

/

ALL PILOTS: PLEASE PUT YOUR A/C CALLSIGN AFTER YOUR NAME.