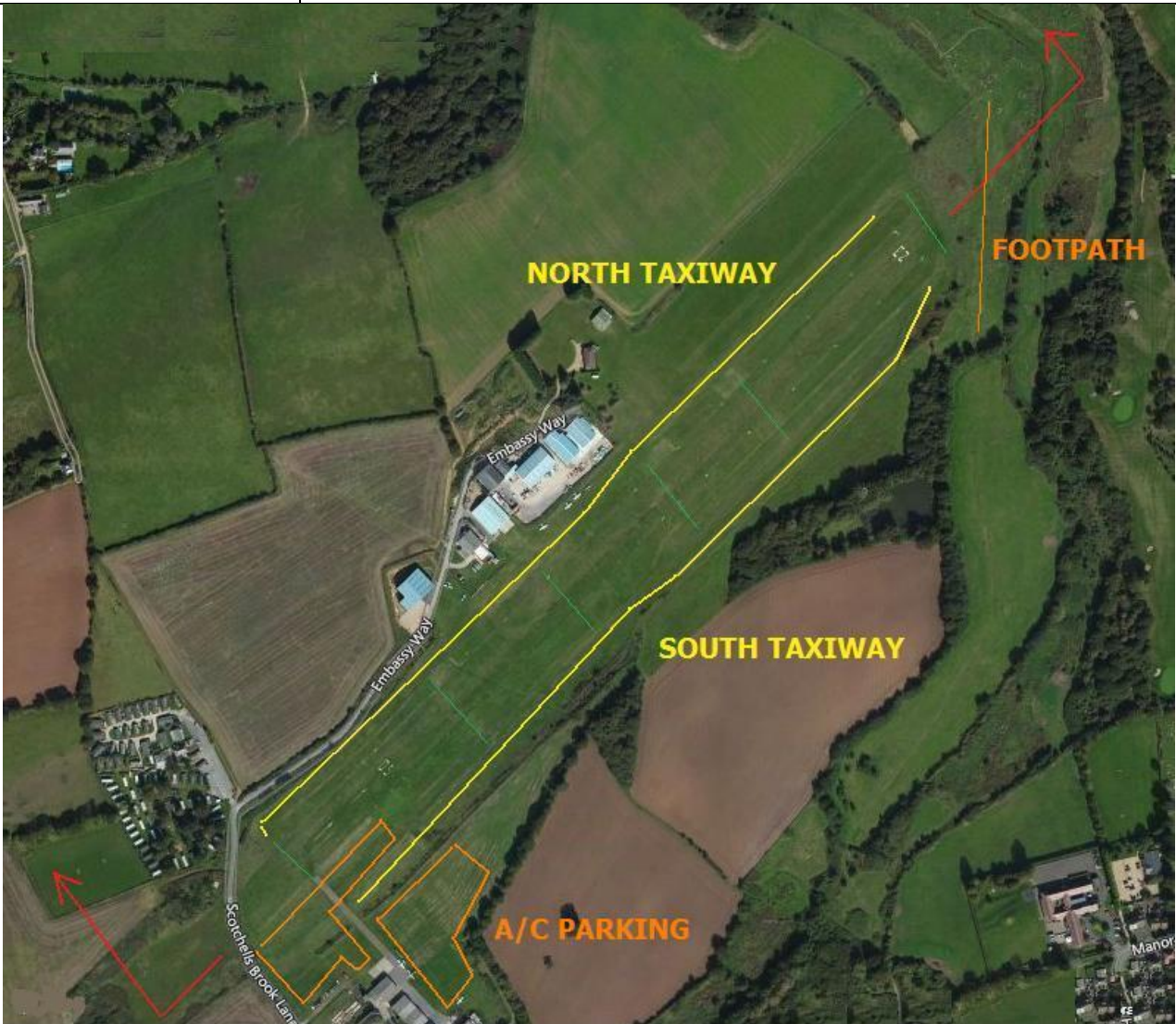


QNH**QFE****WIND****/**

AIRFIELD NAME AND ICAO	SANDOWN IOW		EGHN
CALLSIGN (A/C RADIO)	Sandown Radio		119.270
CALLSIGN (ES/VATSIM)	EGHN_R_TWR		Ground. ----
LOCATION	Lat N050.39.10.000	Long W001.10.57.000	Elev. 52 ft
LOCATION GEOGRAPHIC	1nm W of Sandown, IOW		Conspicuity ----
CHART SOURCE	PlanG/ FSX/Google/ EGHN web-site		App.----
METAR AIRPORT	EGHI, 130.370		QFE= QNH(METAR) -1 HPscls
NAV AIDS (FSX / PLANG3)	NDB/	kHz	DME/ MHz
RUNWAYS	Headings	Dimension	Surface & notes
	05 / 23	884m x 40m	Grass
AIRSPACE/TRANS ALT QNH	CLASS G	Trans level 5000ft	Airspace above is Class A FL105. Airway
CIRCUITS HEIGHT / DIR.	1000ft QFE	05 LH. 23 RH. OHJ's Mandatory.	
NO FLY AREAS	Avoid villages under the circuit. NO FLIGHT EAST of the A/F below 2000ft QNH		
LOCAL HAZARDS	Sea Birds. EGHI, Bembridge, 3nm NE. General grass areas unsafe for A/C.		
HELICOPTER OPERATIONS	DO NOT overfly coastal towns below 1000ft. Do not overfly A/F buildings/parked A/C below 700ft. Fixed wing A/C take precedent in the circuit.		
SPECIAL RULES	DO NOT BACKTRACK the runway, use the taxiways.		
REMARKS	Expect NORDO and Microlight A/C. Free Fall Parachuting may take place on A/F. NO TURNS AT LESS THAN 1NM AFTER TAKE-OFF		



QNH

QFE

WIND

/

ALL PILOTS:

WHEN RECEIVING A SERVICE VIA CIX TEAMSPEAK PLEASE PUT YOUR A/C CALLSIGN AFTER YOUR NAME.

