

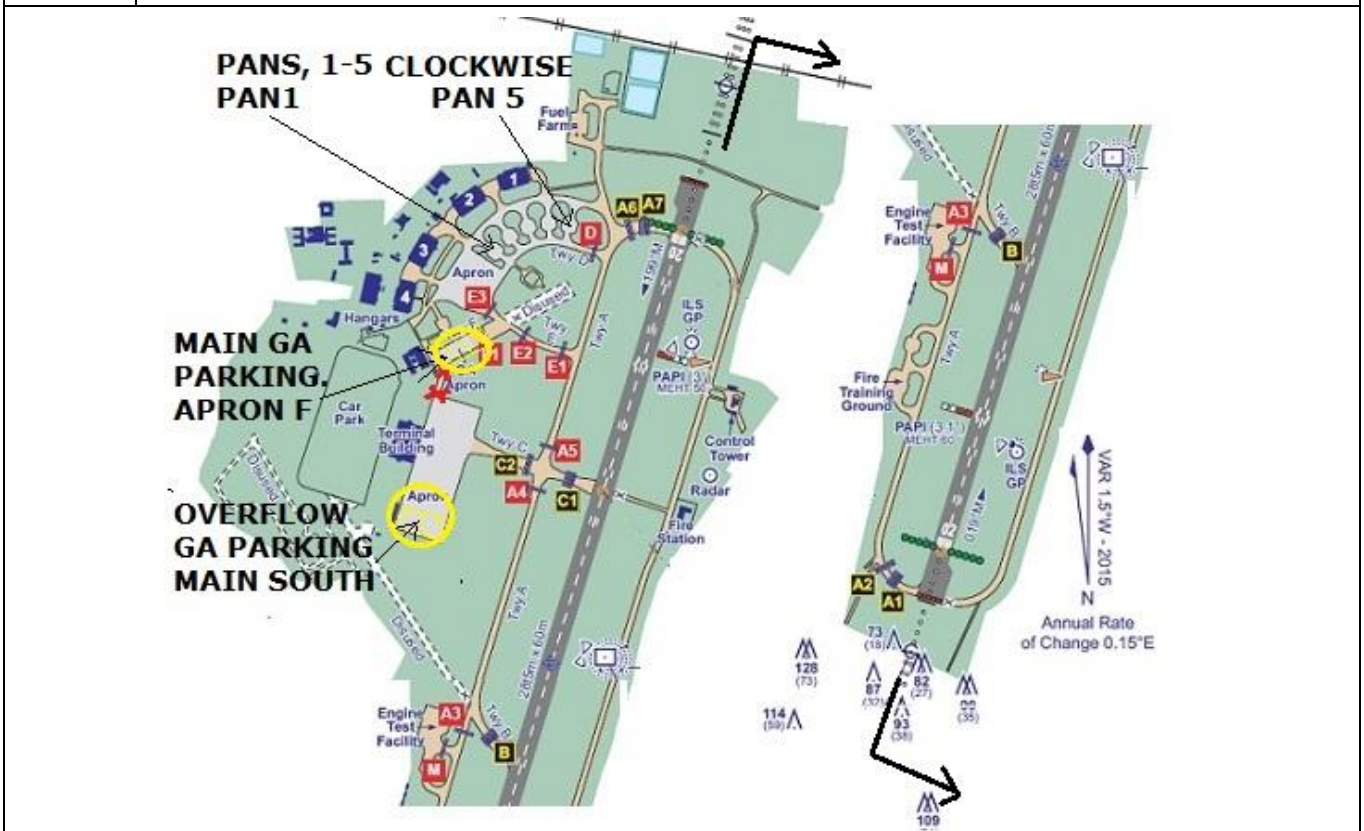
QNH

QFE

WIND

/

AIRFIELD NAME AND ICAO	DONCASTER/SHEFFIELD		EGCN
CALLSIGN (A/C RADIO)	Doncaster Tower		128.770
CALLSIGN (ES/VATSIM)	EGCN_TWR		Ground. 121.700
LOCATION	Lat N053.28.31.000	Long W001.00.14.000	Elev. 55ft
LOCATION GEOGRAPHIC	3nm SE of Doncaster		Conspicuity ---
CHART SOURCE			App./RDR 126.225
METAR AIRPORT	EGCN 134.950		QFE= QNH(METAR) - 1HPscls
NAV AIDS (FSX / PLANG3)	NDB FNY 338kHz. VOR GAM 112.8 on Gameston A/D.		110.950Mhz
RUNWAYS	Headings	Dimension	Surface & notes
	02 / 20	2895m x 60m	Asphalt
AIRSPACE/TRANS ALT QNH	CLASS D CTR	Transition level 5000ft	Airspace above is Class C Lon FIR FL195
CIRCUITS HEIGHT / DIR.	1000'QNH	20 LH; 02 RH; - to the E	Preferred runway; LAND 20; DEPARTE. 02
NO FLY AREAS	Villages of Wroot; Mission and Bawtry.		
LOCAL HAZARDS	BIRDS, various, at all times. Pilots may be requested to delay, due Bird Dispersal procedures. Flocks of RACING PIGEONS may cross the A/F BELOW 100ft during racing season, April -> September		
HELICOPTER OPERATIONS	ARRIVALS: ATC will EITHER select the appropriate threshold for SET-DOWN, or INSTRUCT the helicopter to make AN APPROACH to the runway - Turn onto final, descend and flare to SET DOWN or hover-taxi within the Touch-down Zone. DEPARTURES:		
SPECIAL RULES	When Cat 11/111b A/C are using runway 20, LVPs will be in force and Taxi Bravo CLOSED. During MARGINAL conditions ONLY, PIC may request runway to use. TWR will advise. NO OVER HEAD JOINS; MAXIMUM A/C in circuit (including Helios)=2 THE ENTRY/EXIT LANES are for use by VFR A/C during IMC conditions. A/C MUST obtain clearance to use the lanes from ATC BEFORE entry to the CTA. A/C in the lanes MUST remain in site of ground, NOT ABOVE 2000ft QNH. Traffic information will be passed and any vectoring by ATC MUST be followed.		
REMARKS	Pilots should be aware of the limits of Gameston's LFA.		



QNH

QFE

WIND

/

