

QNH

QFE

WIND

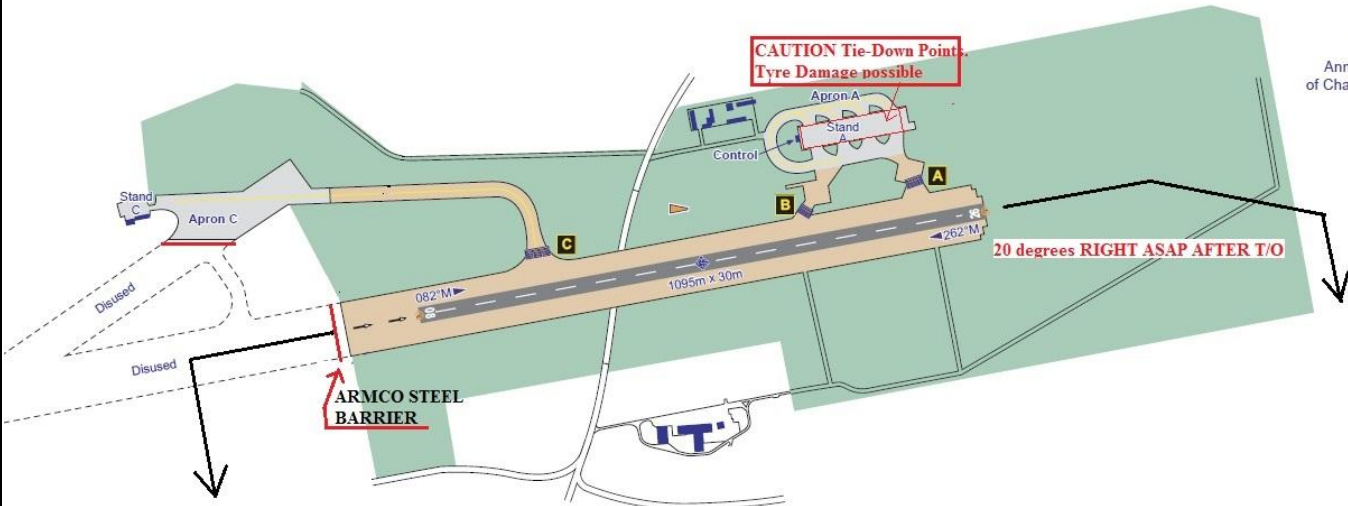
/

AIRFIELD NAME AND ICAO	Bedford		EGBF	
CALLSIGN (A/C RADIO)	Bedford Radio		119.020	
CALLSIGN (ES/VATSIM)	EGBF_R_TWR		Ground. ----	
LOCATION	Lat N052.13.57.000	Long W000.26.44.000	Elev. 273ft	
LOCATION GEOGRAPHIC	5nm N of Bedford. Eastern end of old RAE Bedford A/D		Conspicuity ---	
CHART SOURCE	NATS		App.---	
METAR AIRPORT	EGTC Cranfield. 121.870		QFE= QNH(METAR) -9 HPscls	
NAV AIDS (FSX / PLANG3)	NDB/	kHz	DME/	MHz
RUNWAYS	Headings	Dimension	Surface & notes	
	08 / 26	1095m x 30m	Concrete	
AIRSPACE/TRANS ALT QNH	CLASS	Transition level 6000ft	Airspace above is Class A. 10500' Daventry CTA	
CIRCUITS HEIGHT / DIR.	1000ft	All circuits to the SOUTH. 08 RH; 26 LH.		
NO FLY AREAS	Villages; Bletsoe; Thurleigh; Hatch End; Keysoe and Riseley.			
LOCAL HAZARDS	Permanent ARMCO barrier at start of EGBF designated runway (08 starter)			
HELICOPTER OPERATIONS	Minimum noise procedures. Helicopters not normally accepted.			
SPECIAL RULES	<p>Training, circuit practice, practice forced landings and low passes prohibited.</p> <p>A/D NOT AVAILABLE to Microlights or NORDO A/C.</p> <p>Visiting A/C should contact Cranfield Approach, 122.850, for traffic information/co-ordination.</p>			
REMARKS	<p>AFTER T/O, 08 turn 20° RIGHT, to avoid village.</p> <p>AS far as is practicable, use steep (noise abatement) approaches and departures</p>			

No Microlights
No NORDO A/C

ILS APPROACH TO CRANFIELD IS O/H AT 2500FT.
CONTACT CRANFIELD APPROACH, 122.85 FOR TRAFFIC CO-ORDINATION

VAR 1.1°W - 2015
N
Annual Rate of Change 0.15°E



ALL PILOTS: PLEASE PUT YOUR A/C CALLSIGN AFTER YOUR NAME.